



UPDATES

Updates on possible
LAST-MINUTE CHANGES
of Business Meeting schedules
and chairpersons can be found
on the congress website:

www.eaneurology.org/berlin2015



European Academy of Neurology

EAN Head Office

Breite Gasse 4/7
1070 Vienna | Austria

PHONE: +43 1 889 05 03

FAX: +43 1 889 05 03 13

E-MAIL: headoffice@eaneurology.org

WEB: www.eaneurology.org



CO-SPONSORSHIP

2015

HOST

German Neurological Society



Printed by Bernsteiner Media GmbH, Vienna/Austria
Printing certified according to the
Programme for the Endorsement of Forest Certification Schemes

BERLIN, GERMANY, 20 – 23 JUNE, 2015

TABLE OF CONTENTS

2015

GENERAL

Co-sponsorship	II
Welcoming words	IV
About Berlin	VI
Committees	VII
Appreciation and thanks	IX
Acknowledgements	XII
CME accreditation	XVI
General information	XVII
Overview of business meetings	XXIV
Caring for the environment	XIX
Poster Session overview	XXVII
Networking Programme	XXXVIII
Timetable	XLII
Hall Plan	XLVI

SCIENTIFIC
PROGRAMME

SATURDAY, JUNE 20, 2015

Symposia	53
Focused Workshops	56
Interactive Session	64
Hands-on course	65
Oral Session	66
Teaching Courses	79

SUNDAY, JUNE 21, 2015

Hands-on course	87
Plenary Symposium	88
Focused Workshops	89
Interactive Session	97
Tournament	99
Oral Session	100
Teaching Courses	111
Scientific Satellite Symposia at Charité	117

MONDAY, JUNE 22, 2015

Hands-on course	121
Symposia	122
Focused Workshops	125
Interactive Session	132
Special Session	134
Tournament	135
Oral Session	136
Late Braking News	143
Teaching Courses	144

TUESDAY, JUNE 23, 2015

Symposia	153
Special Session	155
Teaching Courses	159
Satellite Symposia	167
Index of authors	187

WELCOMING WORDS

2015

DEAR PARTICIPANT OF THE
1ST CONGRESS OF THE
EUROPEAN ACADEMY OF NEUROLOGY,

On behalf of the European Academy of Neurology and the German Society of Neurology we are pleased to welcome you to the 1st Congress of the European Academy of Neurology (EAN). The Academy has chosen Berlin for many reasons. It is one of the world's most vibrant capitals, with an impressive cultural, scientific and economic scene, attracting politicians and business travellers, start-ups and artists, tourists and connoisseurs from around the globe. The city is also emerging as the centre of German healthcare.

Berlin has a long neurological history. It was here that Moritz Heinrich Romberg wrote the 'Lehrbuch der Nervenkrankheiten des Menschen', a frontier breaking mid-19th century textbook which is seen as the foundation of modern neurology. Almost 25 years after the fall of the wall, the once divided city of Berlin today symbolizes peaceful revolution, the overthrow of outworn systems and the venture into a new political era. The 1st Congress of the EAN will also write European neurological history. EAN is the joint subsequent organisation of the EFNS (European Federation of Neurological Societies) and ENS (European Neurological Society), and thereby the first united voice of European Neurology. This founding act was celebrated on June 3rd, 2014 at the *Joint Congress of European Neurology in Istanbul*. The first congress of this new Society will be celebrated in the united Berlin.

We have a record number of pre-registrations and more than 2000 submitted abstracts. We will have 8 symposia, 33 teaching courses and overall 250 lectures and 300 speakers. The city cube will be an ideal place to discuss new developments, exchange practice hints from all over Europe and finally meet friends. The EAN Congress in Berlin will provide the ideal platform for continuing education in all fields of neurology, covering a broad spectrum of topics with state-of-the-art lectures by renowned experts. The EAN is dedicated to providing the highest quality of continuing medical education and to opening professional education opportunities.

We are deeply grateful to the joint Programme Committee and its chairpersons Jacques L. De Reuck and Gustave Moonen and the new programme committee with the chair Paul Boon and the many people helping us to organise this major event.

We are looking forward to welcoming you to Berlin in 2015!

Sincerely yours,

Günther Deuschl
PRESIDENT OF THE
EUROPEAN ACADEMY
OF NEUROLOGY

Wolfgang H. Oertel
LOCAL CONVENOR
PAST PRESIDENT GERMAN
SOCIETY OF NEUROLOGY

ABOUT BERLIN

2015

ABOUT BERLIN

Berlin, the capital of Germany, represents with its population of 3.4 million people Germany's largest city. It is located in north-eastern Germany on the river Spree and is the centre of the Berlin-Brandenburg metropolitan region. Due to its location in the European plain, Berlin is influenced by a temperate seasonal climate. About one third of the city's area consists of forests, gardens, parks, rivers and lakes.

The city has been an imperial capital of the Kingdom of Prussia, the German Empire, the Weimar Republic and the Third Reich. After World War II, the city, along with the German state, was divided into East Berlin and West Berlin, (surrounded by the Berlin Wall from 1961 to 1989). After the German reunification in 1990, Berlin was again designated as the capital of all Germany.

Berlin is a world city of culture, science, media and politics and is hosting 147 foreign embassies. The city is also well known for its renowned universities, research institutes, orchestras, operas, museums, and celebrities; as well as for its festivals, diverse architecture, nightlife, contemporary arts, public transportation networks, and an extremely high quality of living.

BOARD

PRESIDENT	Günther Deuschl, GERMANY
VICE PRESIDENTS	Franz Fazekas, AUSTRIA
SECRETARY GENERAL	Didier Leys, FRANCE
TREASURER	Marianne de Visser, THE NETHERLANDS
MEMBER AT LARGE	Per Soelberg Sörensen, DENMARK
CHAIR EDUCATION COMMITTEE	Hannah R. Cock, UK
CHAIR LIAISON COMMITTEE	David B. Vodušek, SLOVENIA
CHAIR PROGRAMME COMMITTEE	Paul Boon, BELGIUM
CHAIR SCIENTIFIC COMMITTEE	Antonio Federico, ITALY

PROGRAMME COMMITTEE

CHAIRPERSON	Paul Boon, BELGIUM
CO-CHAIRPERSON	Wolfgang Oertel, GERMANY
MEMBERS	Ljiljana Beslac-Bumbasirevic, SERBIA Valeria Caso, ITALY Marianne Dieterich, GERMANY Theodor Landis, SWITZERLAND Philip Scheltens, THE NETHERLANDS Aksel Siva, TURKEY Riccardo Soffietti, ITALY Guido Stoll, GERMANY
TEACHING COURSE SUB-COMMITTEE	Theodor Landis, SWITZERLAND

See You In Vienna



AD/PD™ 2017

March 29 - April 2, 2017
Vienna, Austria

Mechanisms, Clinical Strategies,
and Promising Treatments of
Neurodegenerative Diseases

AD/PD™ 2017

The 13th International Conference on
Alzheimer's & Parkinson's Diseases

March 29 - April 2, 2017 | Vienna, Austria

ORGANIZING COMMITTEE

Abraham Fisher, Israel, President

Roger M. Nitsch, Switzerland, Executive Organizer

Manfred Windisch, Austria, Executive Organizer



APPRECIATION AND THANKS

2015

THANK YOU!

We would like to thank the reviewers of the submitted abstracts for their invaluable help and assistance:

A

Sharon Abrahams,
UNITED KINGDOM
Alberto Albanese, ITALY
Yuri Alekseenko, BELARUS
Maria Pia Amato, ITALY
Angelo Antonini, ITALY
Anita Arsovska,
FYRO MACEDONIA
Eduard Auff, AUSTRIA

B

Anish Bahra, UNITED KINGDOM
Ronny Beer, AUSTRIA
Kailash Bhatia, UNITED KINGDOM
Laurence Bisdorff, LUXEMBOURG
Natan Bornstein, ISRAEL
Michael Brainin, AUSTRIA
Adolfo M. Bronstein,
UNITED KINGDOM
Martin Brown, UNITED KINGDOM
Valmantas Budrys, LITHUANIA

C

Pasquale Calabrese,
SWITZERLAND
Stefano F. Cappa, ITALY
Evelien Carrette, BELGIUM
Mamede Carvalho, PORTUGAL
Valeria Caso, ITALY
Raffaella Chieffo, ITALY
Giovanni Cirillo, ITALY

Hannah Cock, UNITED KINGDOM
Carlo Colosimo, ITALY
Giancarlo Comi, ITALY
Charlotte Cordonnier, FRANCE
László Csiba, HUNGARY

D

Maxwell Damian,
UNITED KINGDOM
Marianne de Visser,
THE NETHERLANDS
Günther Deuschl, GERMANY
Marianne Dieterich, GERMANY
Volker Dietz, SWITZERLAND
Marija Djukic, GERMANY

E

Mark Edwards, UNITED KINGDOM
Mikael Elam, SWEDEN
Kirsten Elwischger, AUSTRIA
Christian Enzinger, AUSTRIA

F

Cristian Falup-Pecurariu,
UNITED KINGDOM
Antonio Federico, ITALY
Daniela Ferrari, ITALY
José Manuel Morão Cabral
Ferro, PORTUGAL
Massimo Filippi, ITALY
Katharina Fink, SWEDEN
Sten Fredrikson, SWEDEN

APPRECIATION AND THANKS

2015

G

Franz Gerstenbrand, AUSTRIA
 Nils Erik Gilhus, NORWAY
 Colette Griffin, UNITED KINGDOM
 Wolfgang Grisold, AUSTRIA
 Michael Guger, AUSTRIA
 Orsi Györfi, HUNGARY

H

Ellen Merete Hagen, NORWAY
 Hans-Peter Hartung, GERMANY
 Mirjam Heldner, SWITZERLAND
 David Henshall, IRELAND
 Max Hilz, GERMANY
 Rigmor Hojland Jensen,
 DENMARK
 Martin Holtkamp, GERMANY

I

Alex Iranzo, SPAIN

J

Poul Jennum, DENMARK

K

L.J. Kappelle, NETHERLANDS
 Alexander Karameshev,
 BULGARIA
 Viktoria Kdziezyc, POLAND
 Samson Khachatryan, ARMENIA
 Thomas Klopstock, GERMANY
 Wolfgang Köhler, GERMANY
 Daniel Kondziella, DENMARK
 Janika Kõrv, ESTONIA
 Jera Kruja, ALBANIA
 Jan Kuks, THE NETHERLANDS

L

Theodor Landis, SWITZERLAND
 Nicola Latronico, ITALY
 Jean Marc Léger, FRANCE
 Maurizio Leone, ITALY
 Vitalie Lisnic, MOLDOVA

M

Antonella Macerollo, ITALY
 Björn Machner, GERMANY
 Monica Margoni, ITALY
 Davide Martino, UNITED KINGDOM
 Christopher Mathias,
 UNITED KINGDOM
 Edgar Meinl, GERMANY
 Ioannis Milonas, GREECE
 Antonija Mišmaš, CROATIA
 Monica Moarcas,
 UNITED KINGDOM
 Xavier Montalban, SPAIN
 Lucia Muntean, GERMANY

N

Bo Norrving, SWEDEN

O

Jes Olesen, DENMARK
 Józef Opara, POLAND
 Celia Oreja-Guevara, SPAIN

P

Cristina Panea, ROMANIA
 Eleftherios Papathanasiou,
 CYPRUS
 Fabienne Perren, SWITZERLAND
 Daniela Pohl, CANADA

APPRECIATION AND THANKS

2015

R

Dorota Religa, SWEDEN
Martin Rossor, UNITED KINGDOM
Roberta Rudà, ITALY
Evzen Ruzicka, CZECH REPUBLIC

S

Ettore Salsano, ITALY
Anna Sauerbier,
UNITED KINGDOM
Reinhold Schmidt, AUSTRIA
Erich Schmutzhard, AUSTRIA
Benedikt Schoser, GERMANY
Johann Sellner, AUSTRIA
Vincenzo Silani, ITALY
Riccardo Soffietti, ITALY
Claudia Sommer, GERMANY
Till Sprenger, SWITZERLAND
Israel Steiner, ISRAEL
Guido Stoll, GERMANY
Walter Struhal, AUSTRIA

T

Pille Taba, ESTONIA
Marc Tardieu, FRANCE
Klaus V. Toyka, GERMANY
Maria Troiano, ITALY
Alexander Tsiskaridze, GEORGIA

V

Josep Valls-Solé, SPAIN
Edina Varga, HUNGARY
Timo Vesikari, FINLAND
Marie Vidailhet, FRANCE
Angela Vincent,
UNITED KINGDOM
David Vodušek, SLOVENIA
Kristl Vonck, BELGIUM

Y

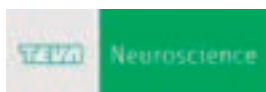
Nataliya Yavorska, UKRAINE

ACKNOWLEDGEMENTS

2015

We wish to express our gratitude to the following companies, who, through their generosity, have helped to make this Congress possible:

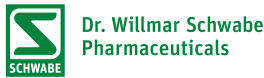
PREMIUM SPONSORS



MAJOR SPONSORS



SPONSORS



ACKNOWLEDGEMENTS

2015

CONTRIBUTORS

abbvie



B:OMARIN[®]

Boston
Scientific



GRIFOLS





WILEY



APPROVAL FOR CME

2015

APPROVAL FOR CME

The 1st Congress of the European Academy of Neurology is accredited by the European Accreditation Council for Continuing Medical Education (EACCME) to provide the following CME activity (event code: 11316) for medical specialists. The EACCME is an institution of the European Union of Medical Specialists (UEMS): <http://www.uems.net>.

The Joint Congress of European Neurology (Saturday, Sunday, Monday, Tuesday) is designated for a maximum of 24 hours of European external CME credits. Each medical specialist should claim only those hours of credit that he/she actually spent in the educational activity.

EACCME credits are recognised by the American Medical Association towards the Physician's Recognition Award (PRA). To convert EACCME credit to AMA PRA category 1 credit, contact the AMA.

This congress has been approved for CME by the Austrian Chamber of Physicians.

ATTENDANCE TRACKING REPORT

If you need a report of your attendance in sessions, please approach the information desk located on level 1, in order to scan your badge and record your attendance. Only participants who have recorded their attendance receive a report, tracking their daily attendance at the congress, which will be sent from the secretariat on request.

GENERAL INFORMATION

INSTRUCTIONS FOR SPEAKERS

SPEAKERS' SERVICE CENTRE

All speakers are requested to hand in their presentations (PowerPoint only) via an USB compatible memory stick at the Speakers' Service Centre (SSC) at least **three hours before the beginning of the session**. The SSC is located close to all lecture halls on Level 1.

Speakers will have the opportunity to check their presentations on PCs available in the SSC.

POSTERS

All posters will be presented as e-posters only.

Within the ePoster area (in front of the exhibition hall) there are poster screens (15 big screens & 20 computer stations) available throughout the whole congress, where presenters and audience are invited to interact with each other. You will be able to contact poster presenters and meet with them at any time at one of the poster screens to discuss his/her work.

In addition there will be two types of poster sessions, taking place Saturday - Tuesday from 12.30 - 13.15 and 13.30 - 14.15.

Please see page **XX** for exact presentation times.

Details on the ePoster sessions can be found in the Interactive Programme Planner (IPP).

Poster with discussion

In a poster session with discussion (45 minutes) up to 9 presentations at the dedicated poster screens are scheduled. A chairperson will be present and discuss each presentation with the presenter and the audience. Each presenter will have 3 minutes presentation time and approximately 2 minutes of discussion. Please make sure that you are present at your poster screen during your session.

Flash poster

GENERAL INFORMATION

2015

Similar to previous paper poster sessions, where presenters stood next to their posters, now all presenters (up to 20 per session) will stand at the screen; the posters will “slide by”, i.e. each poster will be available for approximately 2 minutes and the presenters will have the possibility to highlight their most important data.

POSTER DESK

Technicians will be available throughout the congress in the poster area.

INFORMATION FROM A TO Z

ABSTRACTS

All accepted abstracts will be published as supplement to the *European Journal of Neurology*. There will be no printed book available, but a CD can be picked up at the Genzyme booth in the Exhibition Area. You can find a voucher in your congress bag. The abstracts can also be found online on www.eaneurology.org/berlin2015 and www.europeanjournalofneurology.com.

ATM/CASH MACHINE

An ATM cash machine is located on the entrance level close to the Congress Secretariat. VISA and MasterCard are accepted.

ATTENDANCE TRACKING REPORT

See page **XX**

BADGES

Access to all scientific events will only be possible with your personal badge, which you will receive at the self-print stations. All participants are requested to wear their name badge throughout the congress. For replacement of a lost badge EUR 30 will be charged.

BUSINESS CENTRE

There is a business centre located on the entrance level close to the Congress Secretariat.

Opening times:

Saturday, 20 June 2015	07.30 – 20.30 h
Sunday, 21 June 2015	06.30 – 19.00 h
Monday, 22 June 2015	06.30 – 19.00 h
Tuesday, 23 June 2015	07.30 – 17.30 h

CARING FOR THE ENVIRONMENT

Bag recycling – You can leave your congress bag in a designated recycling box in the registration area when leaving the congress.

Green print – The print materials of this congress have been printed on paper that is PEFC approved. The PEFC is an organisation that certifies paper manufacturers who keep to sustainable forest management criteria.

Reducing print – The book of abstracts is published on a CD Rom. The final programme is printed in a slimmer version. The complete programme can be found online (IPP). See page **XX**.

Recycling – As part of our efforts we try to produce less waste. We will recycle plastic, glass, cans and paper.

Offset your Carbon Footprint – You can contribute to our ecological efforts by offsetting the Carbon Footprint of your travels to Berlin. A Carbon Offset represents a reduction in emissions somewhere else. You can learn more and offset your carbon footprint at: www.carbonfund.org.

We are doing our best and there is still much to learn. We will be happy to hear your ideas; please do not hesitate to write to us at: headoffice@eaneurology.org.

LOCATION

Messe Berlin GmbH – City Cube
 Messedamm 22, 14055 Berlin, Germany
 Phone: +49 30 3038-0, Fax: +49 30 3038-2325
www.citycube-berlin.de

GENERAL INFORMATION

2015

OPENING HOURS SECRETARIAT AND REGISTRATION

The registration desk at the Congress Venue is open during the following hours:

Saturday, 20 June 2015	07.30 – 20.30 h
Sunday, 21 June 2015	06.30 – 19.00 h
Monday, 22 June 2015	06.30 – 19.00 h
Tuesday, 23 June 2015	07.30 – 17.30 h

All documents included in the registration package (congress bag, personal name badge) will be handed over to the registered participants. Onsite registration will be accepted, but receipt of all congress documents cannot be guaranteed.

CERTIFICATE OF ATTENDANCE

You will receive an email with your personal login details for the online evaluation form during the evening of the last day of the congress (Tuesday, 23 June 2015). After completing the congress evaluation form you can print the certificate indicating the CME credits at home. **No certificates will be handed out during the conference.**

CLOAKROOM

A cloakroom is available next to the registration area and is open during the secretariat opening hours. The cloakroom service is free of charge.

EXHIBITION

An extensive exhibition will be held concurrently with the congress.

Exhibition opening hours are:

Saturday 20 June 2015	10.00 – 17.00 h
Sunday 21 June 2015	10.00 – 17.00 h
Monday 22 June 2015	10.00 – 17.00 h
Tuesday 23 June 2015	09.30 – 13.30 h

According to regulations of the Health Authorities, children under the age of 18 years will not be permitted to enter the exhibition area of the Congress.

HOTEL AND TRAVEL

Travel Agency

Congrex Travel Ltd.

PHONE: +90 212 373 99 71 (onsite)

E-MAIL: businessstravel@congrex-switzerland.com

Congrex Travel is present at a desk during the meeting close to the Congress Secretariat. Staff can assist you with your hotel and flight bookings.

INSURANCE & LIABILITY

The Congress organisers and PCO cannot accept liability for personal accidents or loss of or damage to private property of participants, either during or indirectly arising from the 1st Congress of the European Academy of Neurology.

It is recommended that all participants are covered by personal travel insurance for their trip.

INTERNET CORNER

An internet corner is located in the exhibition area and is available to all congress participants during the opening hours of the exhibition. In this area also Wi-Fi is available.

LANGUAGE

The official language of the congress is English. No simultaneous translation will be provided.

LOST & FOUND

Please apply to the secretariat.

LUNCH AND COFFEE BREAKS

Light lunch and coffee is included in the registration fee and will be served in the exhibition area as per the times indicated in the timetable.

MAIL / MESSAGES

A message board is available close to the secretariat on the entrance level.

GENERAL INFORMATION

2015

MEDICAL ASSISTANCE

Please apply to the information desk.

MOBILE PHONES

Please note that mobile phones must be switched off during all sessions.

POSTER SESSIONS

Please see page **XX**

PRESS REGISTRATION AND PRESS ROOM

A media room with wireless internet access is available to registered journalists. Press representatives must register at the secretariat showing their official press accreditation. The Press Room is located at Level 1.

QUALITY CONTROL/ EVALUATION

In order to guarantee the quality of the upcoming congresses, and to get CME certification, we have to carry out congress evaluations. Each teaching course participant should fill in a TC evaluation form and hand in after the TC.

The general evaluation of the congress will be done online. On Tuesday 23 June all participants will receive a username and password per email during the evening. We kindly ask you to participate to receive your certificate.

SCIENTIFIC LOUNGE

A scientific lounge located in the exhibition area will be available for the comfort of participants, providing a place to see webcasts of selected previous sessions, relax and meet with colleagues.

SESSIONS

Please make sure to be in session halls on time as all sessions will begin as per schedule.

SMOKING POLICY

Smoking is prohibited at all times in the meeting halls, exhibit halls and restrooms. Your compliance is appreciated.

SPEAKERS SERVICE CENTRE (SSC)

See page **XX**

TEACHING COURSES

Please check the Scientific Programme for the scheduling of Teaching Courses. If you wish to participate, tickets may still be purchased at the Secretariat for a fee of € 40/ € 25, availability permitting.

TRAVEL

see "Hotel and Travel"

VENUE

The 1st Congress of the European Academy of Neurology takes place at the Messe Berlin – CityCube (www.citycube-berlin.de). The CityCube can be reached by several trains – get off at station "Messe Süd". Further information can be found on the congress website and on <http://www.bvg.de/index.php/en/index.html>

WI-FI

Wi-Fi will be available free of charge around on Level B1 (lecture halls) and Level B2 (exhibition area).

OVERVIEW OF BUSINESS MEETINGS

2015

OVERVIEW OF BUSINESS MEETINGS

(in chronological order, as per date of printing)

Additional meetings reserved after the date of printing will be announced on the Message Board.

GROUP/COMMITTEE	DAY, TIME	CITYCUBE
Guideline production group meeting	Saturday, June 20 15.00-16.00	Room R8
Scientific Committee	Sunday, June 21 09.00-11.00	Room R3
Task Force Sub-Saharan Africa	Sunday, June 21 09.00-11.00	Room R1
Quality Assurance Sub-committee	Sunday, June 21 09.15-10.45	Room R5
Education Committee	Sunday, June 21 11.00-13.00	Room R5
European Journal of Neurology – Editorial Team	Sunday, June 21 14.00-15.00	TBA
European Journal of Neurology – Editorial Board	Sunday, June 21 15.00-16.00	TBA
Liaison Committee	Monday, June 22 09.00-11.00	Room R5
Subspecialty Scientific Panel Chairs	Monday, June 22 11.00-13.00	Room M8
European Affairs Sub-committee	Monday, June 22 11.15-12.30	Room R5
Neuropenews and Website Editorial Board	Monday, June 22 13.00-14.30	Room R5
EAN/WFN Meeting	Monday, June 22 13.30-14.30	Room R3
Industrial Relations Board	Monday, June 22 15.00-16.30	Room M8
Associate Members	Monday, June 22 15.00-16.30	Room R5
Programme Committee	Tuesday, June 23 09.00-10.00	Room R5
Teaching Course sub-committee	Tuesday, June 23 10.30-11.30	Room R5

OVERVIEW OF BUSINESS MEETINGS

2015

OVERVIEW OF BUSINESS MEETINGS OF SUBSPECIALTY SCIENTIFIC PANELS TASK FORCES

(in chronological order, as per date of printing)

Additional meetings reserved after the date of printing
will be announced on the Message Board.

GROUP/COMMITTEE	DAY, TIME	CITYCUBE
Guideline workshop - Early Neurological Prognostication in Coma after Cardiac Arrest	Saturday, June 20 09.00-11.00	Room R8
Subspecialty Scientific Panel on Autonomic nervous system disorders	Saturday, June 20 15.00-16.30	Room R3
Subspecialty Scientific Panel on Neurosonology	Saturday, June 20 15.30-16.30	Room R5
Subspecialty Scientific Panel on Higher cortical function	Saturday, June 20 15.30-16.30	Room R9
Subspecialty Scientific Panel on Headache	Sunday, June 21 09.00-11.00	Room R6
Subspecialty Scientific Panel on Neurotraumatology	Sunday, June 21 11.00-12.00	Room R8
Subspecialty Scientific Panel on ALS and frontotemporal dementia	Sunday, June 21 11.00-12.30	Room R10
Subspecialty Scientific Panel on Muscle disorders	Sunday, June 21 11.00-13.00	Room R9
Subspecialty Scientific Panel on Young sleep neu- rologists	Sunday, June 21 12.30-13.30 (TBC)	TBA
Subspecialty Scientific Panel on Sleep-wake disorders	Sunday, June 21 15.30-16.30 (TBC)	TBA
Subspecialty Scientific Panel on Clinical neuro- physiology	Sunday, June 21 12.30-13.30	Room 3B/83
Subspecialty Scientific Panel on General neu- rology	Sunday, June 21 12.30-13.30	Room 3B/85
Subspecialty Scientific Panel on Neurocritical care	Sunday, June 21 15.00-16.00	Room 3B/88
Subspecialty Scientific Panel on Translational neurology	Sunday, June 21 16.00-17.00	Room 3B/86
Subspecialty Scientific Panel on Neuro-oncology	Sunday, June 21 17.00-18.00	Room 3B/89
Subspecialty Scientific Panel on Neuropathies	Sunday, June 21 17.30-18.30	Room 3B/87
Subspecialty Scientific Panel on Palliative care	Sunday, June 21 18.15-19.15	Room 3B/87

OVERVIEW OF BUSINESS MEETINGS

2015

OVERVIEW OF BUSINESS MEETINGS
OF SUBSPECIALTY SCIENTIFIC PANELS,
TASK FORCES (in chronological order, as per date of printing)

Additional meetings reserved after the date of printing
will be announced on the Message Board.

GROUP/COMMITTEE	DAY, TIME	CITYCUBE
Subspecialty Scientific Panel on Movement disorders	Monday, June 22 07.00–08.00	Room R5 - TBC
Subspecialty Scientific Panel on Neuroimaging	Monday, June 22 09.00–11.00	Room R3
Subspecialty Scientific Panel on Neuro-ophthalmology and -otology	Monday, June 22 09.30–10.30 (TBC)	TBA
Subspecialty Scientific Panel on Multiple sclerosis	Monday, June 22 10.00–11.00	Room R6
Subspecialty Scientific Panel on Child Neurology	Monday, June 22 13.00–14.00	Room R6
Subspecialty Scientific Panel on Neurorehabilitation	Monday, June 22 13.00–14.00	Room R9
Subspecialty Scientific Panel on Stroke	Monday, June 22 13.00–15.00	Room R3
Subspecialty Scientific Panel on Neuroimmunology	Monday, June 22 13.15–14.15	Room R10
Subspecialty Scientific Panel on Neurotoxicology	Monday, June 22 15.00–16.00	Room R3
Subspecialty Scientific Panel on Dementia and cognitive disorders	Monday, June 22 16.00–17.00	Room R9
Subspecialty Scientific Panel on Infectious diseases	Tuesday, June 23 11.00–12.00	Room R3
Subspecialty Scientific Panel on Pain	Tuesday, June 23 12.00–13.00	Room R2
Subspecialty Scientific Panel on Neurogenetics	Tuesday, June 23 13.00–14.00	Room R3

Poster presenters are requested to be at their poster screen at the beginning of the sessions.

POSTER SESSION WITH DISCUSSION: SATURDAY, JUNE 20, 2015

TOPIC (SCREEN NR)	POSTER NUMBERS	CHAIRS	PAGE
12.30-13.15			
Ageing and dementia 1 (Screen A1)	P1101-P1108	Dorota Religa SWEDEN	XXX
Cerebrovascular diseases 1 (Screen A3)	P1109-P1117	Monica Moarcas, ROMANIA	XXX
Headache and pain 1 (Screen B1)	P1118-P1124	To be announced	XXX
Infection and AIDS 1 (Screen B2)	P1125-P1132	Erich Schmutzhard, AUSTRIA	XXX
Motor neurone diseases 1 (Screen B3)	P1133-P1140	Antonia Mismas, SLOVENIA - TBC	XXX
Movement disorders 1 (Screen C1)	P1141-P1147	Gregor Wenning, AUSTRIA - TBC	XXX
Movement disorders 2 (Screen C2)	P1148-P1156	Thomas Klockgether, GERMANY	XXX
MS and related disorders 1 (Screen C3)	P1157-P1165	Viktorija Papp, DENMARK	XXX
MS and related disorders 2 (Screen C4)	P1166-P1174	To be announced	XXX
Neurogenetics 1 (Screen A4)	P1175-P1183	Albert Ludolph, GERMANY	XXX
Peripheral nerve disorders 1 (Screen A2)	P1184-P1192	Pieter van den Bergh, BELGIUM	XXX

Will be available throughout the congress on the poster screens and poster stations in front of the exhibition area. You can contact poster presenters via the Interactive Programme Planner IPP.

POSTER OVERVIEW

2015

Poster presenters are requested to be at their poster screen at the beginning of the sessions.

POSTER SESSION WITH DISCUSSION: SATURDAY, JUNE 20, 2015

TOPIC (SCREEN NR)	POSTER NUMBERS	CHAIRS	PAGE
13.30-14.15			
Ageing and dementia 2 (Screen A1)	P1201-P1208	Agnes Pirker-Kees, AUSTRIA - TBC	XXX
Cerebrovascular diseases 2 (Screen A3)	P1209-P1217	Laszlo Csiba, HUNGARY	XXX
Cognitive neurology/ neuropsychology 1 (Screen A2)	P1218-P1225	Björn Machner, GERMANY	XXX
Headache and pain 2 (Screen B1)	P1226-P1232	Dimos Mitsikostas, GREECE	XXX
Movement disorders 3 (Screen C1)	P1233-P1240	Alexandra Dürr, FRANCE	XXX
Movement disorders 4 (Screen C2)	P1241-P1249	Carlo Colosimo, ITALY	XXX
MS and related disorders 3 (Screen C3)	P1250-P1258	Marcin Mycko, POLAND	XXX
Muscle and neuromuscular junction disease 1 (Screen B2)	P1259-P1265	Richard Orrell, UK	XXX
Neuroepidemiology (Screen B3)	P1266-P1274	Maurizio Leone, ITALY	XXX
Neuroimaging 1 (Screen A4)	P1275-P1283	Maria Assunta Rocca, ITALY	XXX
Sleep disorders 1 (Screen C4)	P1284-P1291	Cistina Panea, ROMANIA	XXX

Will be available throughout the congress on the poster screens and poster stations in front of the exhibition area. You can contact poster presenters via the Interactive Programme Planner IPP.

Poster presenters are requested to be at their poster screen at the beginning of the sessions.

POSTER SESSION WITH DISCUSSION: SUNDAY, JUNE 21, 2015

TOPIC (SCREEN NR)	POSTER NUMBERS	CHAIRS	PAGE
12.30-13.15			
Autonomic nervous system disorders (Screen C4)	P2101-P2110	David Vodusek, SLOVENIA	XXX
Cerebrovascular diseases 3 (Screen A1)	P2111-P2119	Adam Kobayashi, POLAND	XXX
Child and developmental neurology 1 (Screen A2)	P2120-P2125	Daniela Pohl, CANADA	XXX
Education in neurology (Screen A3)	P2126-P2131	Uta Meyding-Lamade GERMANY	XXX
Epilepsy 1 (Screen B1)	P2132-P2139	Torbjörn Tomson, SWEDEN	XXX
Motor neurone diseases 2 (Screen B2)	P2140-P2146	Krzysztof Selmaj, POLAND	XXX
Movement disorders 5 (Screen B3)	P2147-P2155	Kailash Bhatia, UK	XXX
MS and related disorders 4 (Screen C1)	P2156-P2164	Maria Pia Amato, ITALY	XXX
Neurogenetics 2 (Screen A4)	P2165-P2173	Orla Hardiman, IRELAND - TBC	XXX
Neuroimmunology 1 (Screen C2)	P2174-P2181	Katharina Fink, SWEDEN	XXX
Neurological manifestations of systemic disease 1 (Screen C3)	P2182-P2189	Ronny Beer, AUSTRIA - TBC	XXX

Will be available throughout the congress on the poster screens and poster stations in front of the exhibition area. You can contact poster presenters via the Interactive Programme Planner IPP.

POSTER OVERVIEW

2015

Poster presenters are requested to be at their poster screen at the beginning of the sessions.

POSTER SESSION WITH DISCUSSION: SUNDAY, JUNE 21, 2015

TOPIC (SCREEN NR)	POSTER NUMBERS	CHAIRS	PAGE
13.30-14.15			
Cerebrovascular diseases 4 (Screen A1)	P2201-P2209		XXX
Clinical neurophysiology 1 (Screen A2)	P2210-P2217		XXX
Ethics in neurology; History of Neurology; Neurology and Arts (Screen A3)	P2218-P2223		XXX
Headache and pain 3 (Screen B1)	P2224-P2230		XXX
Infection and AIDS 2 (Screen B2)	P2231-P2237		XXX
Movement disorders 6 (Screen B3)	P2238-P2246		XXX
MS and related disorders 5 (Screen C1)	P2247-P2255		XXX
Neuroimaging 2 (Screen A4)	P2256-P2264		XXX
Neurological manifestations of systemic disease 2 (Screen C3)	P2265-P2273		XXX
Neuro-oncology; neurotoxicology/ occupational neurology (Screen C2)	P2274-P2282		XXX
Spinal cord and root disorders 1 (Screen C4)	P2283-P2292		XXX

Will be available throughout the congress on the poster screens and poster stations in front of the exhibition area. You can contact poster presenters via the Interactive Programme Planner IPP.

Poster presenters are requested to be at their poster screen at the beginning of the sessions.

POSTER SESSION WITH DISCUSSION: MONDAY, JUNE 22, 2015

TOPIC (SCREEN NR)	POSTER NUMBERS	CHAIRS	PAGE
12.30-13.15			
Cerebrovascular diseases 5 (Screen A1)	P3101-P3109	Fabienne Perren, SWITZERLAND	XXX
Child and developmental neurology 2 (Screen B2)	P3110-P3115	Anna Sauerbier, UK	XXX
Clinical neurophysiology 2 (Screen A2)	P3116-P3123	Jan Kuks, THE NETHERLANDS	XXX
Cognitive neurology/ neuropsychology 2 (Screen A3)	P3124-P3131	Pasquale Calabrese, SWITZERLAND	XXX
Epilepsy 2 (Screen B1)	P3132-P3139	Erik Tauboll, NORWAY	XXX
Movement disorders 7 (Screen B3)	P3140-P3148	Alberto Albanese, ITALY	XXX
MS and related disorders 6 (Screen C1)	P3149-P3157	Ioannis Milonas, GREECE	XXX
Neurogenetics 3 (Screen A4)	P3158-P3166	Michelangelo Mancuso, ITALY	XXX
Neuroimmunology 2 (Screen C2)	P3167-P3174	Rana Karabudak, TURKEY - TBC	XXX
Neuro-ophthalmology/-otology 1 (Screen C3)	P3175-P3183	Detlef Kömpf, GERMANY	XXX
Peripheral nerve disorders 2 (Screen C4)	P3184-P3192	Riadh Gouider, TUNESIA	XXX

Will be available throughout the congress on the poster screens and poster stations in front of the exhibition area. You can contact poster presenters via the Interactive Programme Planner IPP.

POSTER OVERVIEW

2015

Poster presenters are requested to be at their poster screen at the beginning of the sessions.

POSTER SESSION WITH DISCUSSION: MONDAY, JUNE 22, 2015

TOPIC (SCREEN NR)	POSTER NUMBERS	CHAIRS	PAGE
13.30-14.15			
Cerebrovascular diseases 6 (Screen A1)	P3201-P3209	Serefnur Öztürk, TURKEY	XXX
Cognitive neurology/ neuropsychology 3 (Screen A3)	P3210-P3217	Theodor Landis, SWITZERLAND	XXX
Critical care (Screen A2)	P3218-P3225	Manfred Kaps, GERMANY	XXX
Epilepsy 3 (Screen B1)	P3226-P3233	Geert Mayer, GERMANY	XXX
Movement disorders 8 (Screen B3)	P3234-P3242	Andrea Kühn, GERMANY - TBC	XXX
MS and related disorders 7 (Screen C1)	P3243-P3251	Wolfgang Köhler, GERMANY	XXX
Muscle and neuromuscular junction disease 2 (Screen B2)	P3252-P3259	Benedikt Schoser, GERMANY	XXX
Neurorehabilitation; neuro-traumatology (Screen A4)	P3260-P3270	Volker Dietz, SWITZERLAND	XXX
Peripheral nerve disorders 3 (Screen C4)	P3271-P3278	Claudia Sommer, GERMANY	XXX
Spinal cord and root disorders 2 (Screen C2)	P3279-P3288	Ellen Merete Hagen, NORWAY	XXX

Will be available throughout the congress on the poster screens and poster stations in front of the exhibition area. You can contact poster presenters via the Interactive Programme Planner IPP.

POSTER OVERVIEW

2015

Poster presenters are requested to be at their poster screen at the beginning of the sessions.

POSTER SESSION WITH DISCUSSION: TUESDAY, JUNE 23, 2015

TOPIC (SCREEN NR)	POSTER NUMBERS	CHAIRS	PAGE
10.45-11.30			
Ageing and dementia 3 (Screen A1)	P4101-P4108	Sokratis Papageorgiou, GREECE	XXX
Clinical neurophysiology 3 (Screen A2)	P4109-P4115	Werner Mess, THE NETHERLANDS	XXX
Epilepsy 4 (Screen A3)	P4116-P4123	Jera Kruja, ALBANIA	XXX
Motor neurone diseases 3 (Screen B1)	P4124-P4130	Jean-Michel Vallat, FRANCE	XXX
Movement disorders 9 (Screen B2)	P4131-P4138	Mark Edwards, UK	XXX
MS and related disorders 8 (Screen C1)	P4139-P4146	Celia Oreja-Guevara, SPAIN	XXX
MS and related disorders 9 (Screen C2)	P4147-P4155	Valmantas Budrys, LITHUANIA - TBC	XXX
Neurogenetics 4 (Screen A4)	P4156-P4163	Antonio Federico, ITALY	XXX
Neuroimaging 3 (Screen B3)	P4164-P4171	Christian Enzinger, AUSTRIA	XXX
Neuro-ophthalmology/ neuro-otology 2 (Screen C3)	P4172-P4179	Adolfo Bronstein, UK	XXX
Sleep disorders 2 (Screen C4)	P4180-P4186	Poul Jennum, DENMARK	XXX
11.45-12.30			
Movement disorders 10 (Screen B2)	F4201-F4208	Jozef Opara, POLAND	XXX
MS and related disorders 10 (Screen C1)	F4209-F4217	Ludwig Kappos, SWITZERLAND	XXX
MS and related disorders 11 (Screen C2)	F4218-F4225	Achim Gass, GERMANY - TBC	XXX

Will be available throughout the congress on the poster screens and poster stations in front of the exhibition area. You can contact poster presenters via the Interactive Programme Planner IPP.

POSTER OVERVIEW

2015

Poster presenters are requested to be at their poster screen at the beginning of the sessions.

FLASH POSTER SESSION: SATURDAY, JUNE 20, 2015

TOPIC (SCREEN NR)	POSTER NUMBERS	PAGE
12.30-13.15		
Child neurology; Education in neurology; Neuroethics; History of neurology; Neurology and arts (Screen C1)	F1001-F1019	XXX
Cognitive neurology/ neuropsychology (Screen A7)	F1020-F1034	XXX
Epilepsy 1 (Screen A9)	F1035-F1049	XXX
Infection and AIDS (Screen B5)	F1050-F1067	XXX
Movement disorders 1 (Screen B9)	F1068-F1082	XXX
Neuroimmunology 1 (Screen A5)	F1083-F1094	XXX
Neuro-oncology (Screen C7)	F1095-F1111	XXX
13.30-14.15		
Clinical neurophysiology (Screen C7)	F1112-F1122	XXX
Epilepsy 2 (Screen B9)	F1123-F1137	XXX
Neurogenetics (Screen A7)	F1138-F1148	XXX
Neurological manifestations of systemic disease (Screen A9)	F1149-F1163	XXX
Neuro-ophthalmology/-otology (Screen B5)	F1164-F1179	XXX
Neurotraumatology; Critical care (Screen A5)	F1180-F1195	XXX
Sleep disorders (Screen C5)	F1196-F1205	XXX

Will be available throughout the congress on the poster screens and poster stations in front of the exhibition area. You can contact poster presenters via the Interactive Programme Planner IPP.

Poster presenters are requested to be at their poster screen at the beginning of the sessions.

FLASH POSTER SESSION: SUNDAY, JUNE 21, 2015

TOPIC (SCREEN NR)	POSTER NUMBERS	PAGE
12.30-13.15		
Ageing and dementia 1 (Screen A7)	F2001-F2018	XXX
Cerebrovascular diseases 1 (Screen C5)	F2019-F2035	XXX
Cerebrovascular diseases 2 (Screen C7)	F2036-F2050	XXX
Movement disorders 2 (Screen A5)	F2051-F2065	XXX
MS and related disorders 1 (Screen B5)	F2066-F2084	XXX
Muscle and neuromuscular junction disease 1 (Screen A9)	F2085-F2096	XXX
Neuroimaging 1 (Screen B9)	F2097-F2108	XXX
13.30-14.15		
Cerebrovascular diseases 3 (Screen C5)	F1109-F1123	XXX
Headache and pain 1 (Screen C7)	F1124-F1139	XXX
Movement disorders 3 (Screen A7)	F1140-F1153	XXX
MS and related disorders 2 (Screen B5)	F1154-F1173	XXX
Neurorehabilitation (Screen A9)	F1174-F1193	XXX
Peripheral nerve disorders 1 (Screen B9)	F1194-F1206	XXX

Will be available throughout the congress on the poster screens and poster stations in front of the exhibition area. You can contact poster presenters via the Interactive Programme Planner IPP.

POSTER OVERVIEW

2015

Poster presenters are requested to be at their poster screen at the beginning of the sessions.

FLASH POSTER SESSION: MONDAY, JUNE 22, 2015

TOPIC (SCREEN NR)	POSTER NUMBERS	PAGE
12.30-13.15		
Ageing and dementia 2 (Screen A5)	F3001-F3017	XXX
Cerebrovascular diseases 4 (Screen C5)	F3018-F3032	XXX
Headache and pain 2 (Screen A9)	F3033-F3048	XXX
MS and related disorders 3 (Screen B9)	F3049-F3066	XXX
Muscle and neuromuscular junction disease 2 (Screen B5)	F3067-F3078	XXX
Neuroepidemiology; neurotoxicology; Autonomic nervous system disorders (Screen C7)	F3079-F3092	XXX
13.30-14.15		
Cerebrovascular diseases 5 (Screen B5)	F3093-F3108	XXX
Motor neurone diseases (Screen A5)	F3109-F3120	XXX
Movement disorders 4 (Screen A9)	F3121-F3135	XXX
MS and related (Screen B9)	F3136-F3153	XXX
Neuroimaging 2 (Screen C5)	F3154-F3165	XXX

Will be available throughout the congress on the poster screens and poster stations in front of the exhibition area. You can contact poster presenters via the Interactive Programme Planner IPP.

Poster presenters are requested to be at their poster screen at the beginning of the sessions.

FLASH POSTER SESSION: TUESDAY, JUNE 23, 2015

TOPIC (SCREEN NR)	POSTER NUMBERS	PAGE
12.30–13.15		
Cerebrovascular diseases 6 (Screen A5)	F4001-F4015	XXX
Cerebrovascular diseases 7 (Screen A7)	F4016-F4030	XXX
Neuroimmunology 2 (Screen B9)	F4031-F4042	XXX
Peripheral nerve disorders 2 (Screen B5)	F4043-F4055	XXX
Spinal cord and root disorders (Screen C5)	F4056-F4066	XXX
13.30–14.15		
Cerebrovascular diseases 8 (Screen A5)	F4067-F4082	XXX
Cerebrovascular diseases 9 (Screen A7)	F4083-F4097	XXX
Movement disorders 5 (Screen C5)	F4098-F4109	XXX
MS and related disorders 5 (Screen B9)	F4110-F4127	XXX

Will be available throughout the congress on the poster screens and poster stations in front of the exhibition area. You can contact poster presenters via the Interactive Programme Planner IPP.

OFFICIAL NETWORKING PROGRAMME

2015

OPENING CEREMONY

Saturday, June 20, 2015.

During the Opening Ceremony the EAN will welcome all participants to this unique congress which will mark a milestone in European Neurology.

PROGRAMME

Chairpersons: Paul Boon, Günther Deuschl, Wolfgang Oertel

"Welcoming words"

Wolfgang Oertel, Marburg, Germany

Local Chairperson

"About the WFN"

Raad Shakir, London, UK

President of the WFN

"The first steps of a new Society"

Günther Deuschl, Kiel Germany

EAN President

"Awards to EAN Honorary members"

"What can musicians teach neurologists?"

Eckart Altenmüller, Hannover, Germany

followed by a musical performance by the Comedian Harmonists

All participants and exhibitors are invited to the Opening Ceremony and Welcome Reception.

Please wear your badge.

CHARITÉ HOSPITAL – 20.00 H**Sunday, June 21, 2015.**

“From the Venetian Gondola to the Gardens of Granada”

– A musical Expedition –

Vivaldi, Stravinsky, Brahms, de Falla

This concert is organised by Prof. Dr. Klaus V. Toyka and belongs to the concert series “Music at the Neurology”. It is organised on the occasion of the 1st Congress of the EAN.

Tickets are EUR 12 per person.

Venue:

Lecture Hall - Department of Dermatology

Charité Hospital, Humboldt University - Entrance: Luisenstrasse 2

REGISTRATION:

In order to purchase tickets, please proceed to the secretariat.

**NETWORKING RECEPTION AT
CHARLOTTENBURG PALACE****Monday, June 22, 2015, starting at 20.15h.**

The Networking Event will be held at the Orangerie in the famous Schloss Charlottenburg.

Charlottenburg Palace is the largest palace in Berlin, and the only surviving royal residence in the city dating back to the time of the Hohenzollern family.

The palace was built at the end of the 17th century and was greatly expanded during the 18th century. It is famous for its baroque and rococo style decoration. A large formal garden surrounded by woodland was added behind the palace, including a belvedere, a mausoleum, a theatre and a pavilion. During the Second World War, the palace was badly damaged but has since been reconstructed.

OFFICIAL NETWORKING PROGRAMME

2015

Join this exciting event with a lot of surprises and a delicious culinary treat and use the opportunity to network with your friends and colleagues in a unique and historic surrounding.

Tickets are EUR 95,- per person and EUR 60,- for young neurologists and participants from middle/low income countries as well as retired persons. Food and drinks included.

REGISTRATION:

The number of tickets is limited and will be distributed on 'first-come first-served' basis at the registration desk.

HOW TO GET THERE:

Distance from CityCube: 4,5 km; Kurfürstendamm: 2,8 km; Alexanderplatz: 10 km; Berlin Hbf: 7 km

- S-Bahn up to Westend; 3 stops by bus M45 up to Charlottenburg Palace (direction Zoologischer Garten)
- Underground (U-Bahn) line 7 up to Richard-Wagner-Platz, then bus M45 up to Charlottenburg Palace, or approx. 15 minutes walking distance (direction Johannesstift)
- Bus M45 from Zoologischer Garten (direction Johannesstift), or Bus 109 (direction Tegel airport) up to Charlottenburg Palace

FIRST EUROPEAN CONGRESS on Hereditary ATTR amyloidosis

IMPROVING CLINICAL MANAGEMENT

November 2 and 3, 2015

Co-organizers **David Adams** (Paris, France)
and **Teresa Coelho** (Porto, Portugal)

MAIN TOPICS :

- Epidemiology of TTR-FAP in Europe
- Genotypes and phenotypes
- Diagnosis and staging
- New tools for diagnosis
- Disease modifying therapies
- Clinical trials
- Genetic counseling and reproduction
- Novelties in symptomatic therapies

Institut Pasteur - 25-28 rue du Docteur Roux - 75015 Paris - France

www.ec-attr.com



ADMINISTRATIVE OFFICE

lepublicsystème pco
organisation professionnelle de congrès

TIMETABLE SATURDAY, JUNE 20, 2015

2015

HALL 2.2	HALL 8	HALL A6	HALL A7	HALL A3	HALL A5	HALL A1	HALL A2	HALL A4	HALL M2+3	HALL M1	EXHIBITION/ POSTER	
Sy1 08:30-10:30 Management of spontaneous intracerebral haemorrhage	Sy2 08:30-10:30 Epilepsy	Sy3 08:30-10:30 Modern molecular genetics in clinical myology and future									10:00-17:00 Exhibition	
10:30-11:00 Coffee break												
IS1 11:00-12:30 Update on vestibular disorders	FW1 11:00-12:30 Innovative approach to MS therapy - antigen induced immune tolerance	FW2 11:00-12:30 Migraine biomarkers: facts, fiction & future	FW3 11:00-12:30 Cognitive deterioration after stroke - detection, prevention and treatment	FW4 11:00-12:30 Metals and movement disorders	FW5 11:00-12:30 Human spatial orientation	FW6 11:00-12:30 Neurogenetics: Who, when and which test?	FW7 11:00-12:30 Neurophysiological evaluation of autonomic nervous system dysfunction	FW8 11:00-12:30 Gut and brain			HOCl 11:00-12:30 Neurophysiology I - basic	
SoS 13:00-14:30 Biogen Satellite Symposium: A multiple sclerosis patient journey: what drives decisions?	SoS 13:00-14:30 UCB Epilepsy Satellite Symposium: The Hippocratic Oath "Do no harm" - considerations for the treatment of chronic neurological diseases							SoS 13:00-14:30 Dr. Willmar Schwabe Satellite Symposium: Expectations for neurodegenerative disorders patients			12:30-13:15 / 13:30-14:15 Poster Session 1	
TC1 14.45-18.15 Basic element issues of stroke Level 1	OS 14.45-16.15 Movement disorders 1	OS 14.45-16.15 Multiple sclerosis disorders 1	TC2 14.45-18.15 Current treatments in neurology Level 1	TC3 14.45-18.15 New advances in the treatment of immune mediated neuropathies Level 3	TC4 14.45-18.15 Diagnosis and differential diagnosis of amyotrophic lateral sclerosis (ALS) Level 2	TC5 14.45-18.15 Epilepsy, basic to the seizing patient Level 1	TC6 14.45-18.15 The aging brain Level 1	OS 14.45-16.15 Peripheral nerve disorders 1	OS 14.45-16.15 Neurogenetics	OS 14.45-16.15 Neurotrauma - topics and rehabilitation		
16:15-16:45 Coffee break												
(cont.)	OS 16.45-18.15 Movement disorders 2	OS 16.45-18.15 Multiple sclerosis disorders 2	(cont.)	(cont.)	(cont.)	(cont.)	(cont.)	OS 16.45-18.15 Neuro-ophthalmology / -otology	OS 16.45-18.15 Clinical neurophysiology	OS 16.45-18.15 Sleep disorders		
NE 18:30 - 19:30 Opening Ceremony 19:30 - 21:00 Welcome Reception												

TIMETABLE SUNDAY, JUNE 21, 2015

2015

HALL 2.2	HALL A8	HALL A6	HALL A7	HALL A3	HALL A5	HALL A1	HALL A2	HALL A4	HALL M2+3	HALL M1	EXHIBITION/ POSTER
			SaS 07:00-08:30 Novartis Satellite Symposium MS in the real world						HOCE Neuro-physiology II - basic		10.00-1700 Exhibition
10:30-11:00 Coffee break											
IS2 11.00-12.30 Practical diagnosis - common misinterpretations	FW8 11.00-12.30 Dementia with parkinsonism		FW10 11.00-12.30 Unresolved clinical issues in the secondary prevention of ischaemic stroke	FW11 11.00-12.30 Epilepsy in gliomas	FW12 11.00-12.30 RNA-related disorders and RNA interference in therapy	FW13 11.00-12.30 Neurostimulation in paroxysmal disorders	FW14 11.00-12.30 Update on the clinical care of neuromuscular disorders	FW15 11.00-12.30 Neurological management of atropogens in modern era	FW16 11.00-12.30 Taking a historical sleep history	HOC3 11.00-12.30 Neuro-oncology	
SaS 13.00-14.30 Novartis Satellite Symposium Practical drug delivery for tomorrow: evolving treatment paradigms in MS		SaS 13.00-14.30 Brianna Satellite Symposium Neural drug delivery strategies: from early diagnosis to advanced treatments		Lunch Break			SaS 13.00-14.30 Actelion Satellite Symposium A new age in detection, diagnosis and disease management: functional progress in Niemann-Pick disease Type C	SaS 13.00-14.30 Genzyme Satellite Symposium Fleeting minds - Why we forget and how to look for Fabry and Pompe disease in the neurology setting			12.30-13.15 / 13.30-14.15 Poster Session 2
TC7 14.45-18.15 Novel insights in stroke aetiologies Level 3	TC8 14.45-18.15 Multiple sclerosis Level 2-3	OS 14.45-16.15 Movement disorders 3	TC9 14.45-18.15 How to diagnose and manage mitochondrial disorders Level 2	TC10 14.45-18.15 ADEM, MS, NMO & Co in children, adolescents and young adults - does age matter? Level 1	TC11 14.45-18.15 Imaging in clinical decision making Level 1	OS 14.45-16.15 Cerebrovascular diseases 1	OS 14.45-16.15 Epilepsy 1	TC12 14.45-18.15 How to deal with difficult communication issues in palliative neurology Level 2	OS 14.45-16.15 Tournament (clinical)	OS 14.45-16.15 Neuro-oncology	
16:15-16:45 Coffee break											
(cont.)	(cont.)	OS 16.45-18.15 Multiple sclerosis and related disorders 3	(cont.)	(cont.)	(cont.)	OS 16.45-18.15 Peripheral nerve disorders 2	OS 16.45-18.15 Epilepsy 2	(cont.)	OS 16.45-18.15 Motor neurone diseases	OS 16.45-18.15 Sleep disorders	
SaS 18.30-2000 Eva Satellite Symposium New challenges in multiple sclerosis		SaS 18.30-2000 Eisa Satellite Symposium Generalised seizures: challenges and solutions	(cont.)	(cont.)	SaS 18.30-2000 Eli Satellite Symposium Review of COMT inhibitor therapy in Parkinson's disease	SaS 18.30-2000 Takeda Satellite Symposium Post-stroke cognitive impairment: challenges and new treatment strategies					

TIMETABLE MONDAY, JUNE 22, 2015

2015

HALL 2.2	HALL A8	HALL A6	HALL A7	HALL A3	HALL A5	HALL A1	HALL A2	HALL A4	HALL M2+3	HALL M1	EXHIBITION/ POSTER
Sy4 08:30-10:30 Early/preclinical Alzheimer's disease	Sy5 08:30-10:30 Expanding fields in neurology	Sy6 08:30-10:30 Present and future treatment in movement disorders								HC04 0700-0830 Neurophysiology III - advanced	10.00-17.00 Exhibition
10:30-11:00 Coffee break											
	IS3 11.00-12.30 Movement and gait disorders	FW17 11.00-12.30 Non-coding RNA in multiple sclerosis - from pathogenesis to therapy	FW18 11.00-12.30 Novel approaches for the rehabilitation of movement disorders after stroke	SpS 11.00-13.00 European Basal Ganglia Club	FW20 11.00-12.30 Infections of the nervous system: The impact of a changing environment and society on epidemiology, course of disease and pathogenesis	FW21 11.00-12.30 Adult-onset leukodystrophies	FW22 11.00-12.30 Antibodies in neuropathy	FW19 11.00-12.30 Non-pharmacological issues in dementia	FM23 11.00-12.30 Autoimmune myoasthenia gravis	HC05 11.00-12.30 Neuro-ology	
SpS 13.00-14.30 Genzyme Satellite Symposium From MOA to clinical treatment decisions. Is there a new way to think in MS?	TC14 14.45-18.15 Therapeutic strategies in multiple sclerosis Level 1-2	SpS 13.00-14.30 Zambon Satellite Symposium Changing the paradigm in mid-late-stage IP: Evidence, flexibility in Parkinson's disease	SpS 13.00-14.30 Eisai Satellite Symposium Optimizing epilepsy therapy - searching for the evidence, looking beyond the data	TC16 14.45-18.15 Facial pain: diagnosis and management Level 2	TC17 14.45-18.15 Interventions in neurocritical care Level 2	TC18 14.45-18.15 Impact and management of sleep disorders in neurology Level 1	T 14.45-18.15 Tournament (basic)	SpS 13.00-14.30 Pfizer Satellite Symposium A rare disease that demands our collaborative approach - IIR - novel polyneuropathy (TTR-FAP)	OS 14.45-16.15 Cognitive neurology	OS 14.45-16.15 Neuroimaging	12:30-13.15 / 13.30-14.15 Poster-Session 3
TC13 14.45-18.15 Parkinson's disease - multifunctional therapies and DBS Level 1	TC15 14.45-18.15 Epilepsy - the recent of the refractory patient Level 3	OS 14.45-16.15 Ageing and dementia	OS 14.45-16.15 Facial pain: diagnosis and management Level 2	TC16 14.45-18.15 Facial pain: diagnosis and management Level 2	TC17 14.45-18.15 Interventions in neurocritical care Level 2	TC18 14.45-18.15 Impact and management of sleep disorders in neurology Level 1	T 14.45-18.15 Tournament (basic)	OS 14.45-16.15 Cerebrovascular diseases 2	OS 14.45-16.15 Cognitive neurology	OS 14.45-16.15 Neuroimaging	
16:15-16:45 Coffee break											
(cont.)	(cont.)	(cont.)	(cont.)	(cont.)	(cont.)	(cont.)	(cont.)	(cont.)	(cont.)	OS 15.15-16.45 Neuro-immunology	
	(cont.)	(cont.)	(cont.)	(cont.)	(cont.)	(cont.)	(cont.)	(cont.)	(cont.)	OS 16.45-18.15 Cerebrovascular diseases 3	
	(cont.)	(cont.)	(cont.)	(cont.)	(cont.)	(cont.)	(cont.)	(cont.)	(cont.)	OS 16.45-18.15 Muscle and neuronal junction diseases	
	(cont.)	(cont.)	(cont.)	(cont.)	(cont.)	(cont.)	(cont.)	(cont.)	(cont.)	OS 18.30-20.00 F. Hoffmann-La Roche Satellite Symposium Breakthroughs in neuroscience: what every neurologist needs to know and why!	

TIMETABLE TUESDAY, JUNE 23, 2015

2015

HALL 8	HALL 6	HALL 7	HALL 3	HALL 5	HALL 1	HALL 2	HALL 4	HALL 2/3	HALL 1	EXHIBITION/ POSTER
S7 08:00-10:00 Multiple sclerosis	Sy8 08:00-10:00 Infections of the central nervous system: recent advances									09:00-13:30 Exhibition
10:00-10:30 Coffee break										
SaS 10:30-12:00 Satellite Symposium	SaS 10:30-12:00 Satellite Symposium	Sps 10:30-12:15 Highlights of the congress				Sps 10:30-12:30 EAYNT Session	Sps 10:30-12:00 EAN & PAUNS	Sps 10:30-12:00 History of Neurology		
12:00-13:00 Lunch Break										
		TC19 13:00-16:30 Movement disorders associated with auto-antibodies Level E	TC20 13:00-16:30 Clinical and therapeutical approach to muscle disorders Level 1	TC21 13:00-16:30 The neurological bedside examination Level 1	TC22 13:00-16:30 Assessment of neuropathic pain in clinical practice Level 2	TC23 13:00-16:30 Current treatment in neurology II Level 2	TC24 13:00-16:30 Atypical Alzheimer's disease Level 2-3	TC25 13:00-16:30 The spectrum of neuro-oncology Level 2		10:45-11:30 / 11:45-12:30 Poster Session 4
14:30-15:00 Coffee break										
		(cont.)	(cont.)	(cont.)	(cont.)	(cont.)	(cont.)	(cont.)	(cont.)	

KEY: FW | Focused Workshop
 IS | Interactive Session
 OS | Oral Session
 SaS | Satellite Symposium
 Sps | Special Session
 Sy | Symposium
 TC | Teaching Course
 SaS | Satellite Symposium
 T | Tournament
 HOC | Hands-on-course
 NE | Networking Events

HALL PLAN

2015



BERLIN, GERMANY, 20 – 23 JUNE, 2015

HIGH-IMPACT, CUTTING-EDGE RESEARCH FROM BMJ

FREE
30 DAY
ONLINE
TRIAL

BMJ's suite of world-class neurology journals publishes high-impact, cutting-edge research from around the world.

To find out more, and to chat with some of our team members, visit us at booth no. E07!

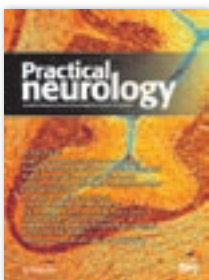


JOURNAL OF NEUROLOGY, NEUROSURGERY AND PSYCHIATRY

jnnp.bmj.com

FREE ONLINE TRIAL: response.jnnp@bmj.com

Publishing the most ground-breaking and cutting-edge research from around the world, encompassing the entire genre of neurological sciences.



PRACTICAL NEUROLOGY

pn.bmj.com

FREE ONLINE TRIAL: response.pn@bmj.com

A journal for everyone who sees neurological patients and who wants to keep up to date, and safe, in managing them.



JOURNAL OF NEUROINTERVENTIONAL SURGERY

jnis.bmj.com

**FREE ONLINE TRIAL:
response.jnis@bmj.com**

A leading peer review journal for scientific research and literature pertaining to the field of neurointerventional surgery.

journals.bmj.com

BMJ



XXII World Congress of Neurology

Santiago - Chile 2015

Changing Neurology Worldwide
Santiago, Chile, October 31 - November 5, 2015



REGISTER EARLY AND SAVE

EARLY BIRD REGISTRATION DEADLINE: JULY 6 2015

WCN
2015



www.wcn-neurology.com



FINAL

SCIENTIFIC PROGRAMME

BERLIN, GERMANY, 20 – 23 JUNE, 2015

Consortium of Multiple Sclerosis Centers

www.ms-care.org



JOIN THE MS TEAM

Celebrating

30



THE CONSORTIUM OF
MULTIPLE SCLEROSIS CENTERS

1986-2016

years of MS Care

SATURDAY, JUNE 20, 2015

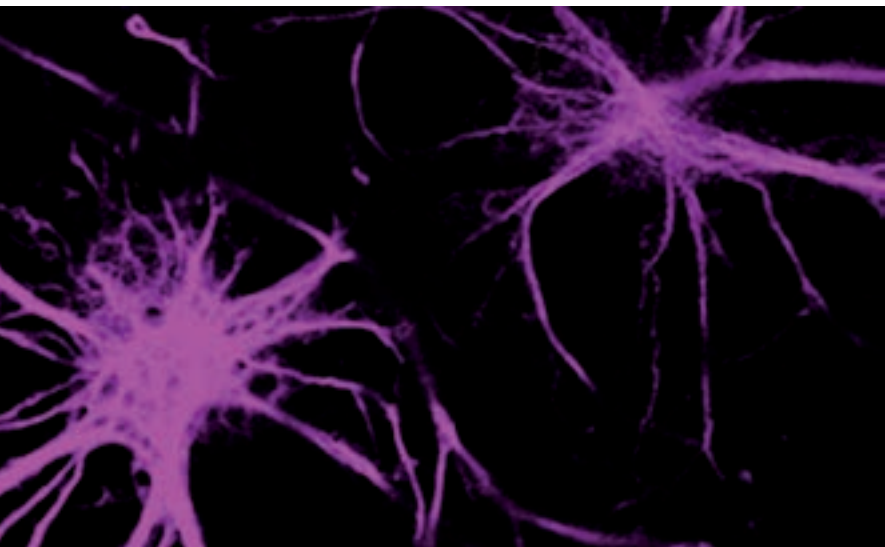
SESSIONS

Publish your next piece of research in

Alzheimer's Research and Therapy

IMPACT
FACTOR
3.50

Editors-in-Chief: Douglas R Galasko, Todd E Golde, Philip Scheltens



The major forum for translational research in Alzheimer's dementia and other neurodegenerative diseases.

- Rapid peer review and immediate publication on acceptance
- Unique focus on translational research
- Open access content: freely available online
- Prestigious and international Editorial Board

For more information please contact editorial@alzres.com



alzres.com



alz.co.uk



biomedcentral.com

SYMPOSIUM 1 EAN-ESO SYMPOSIUM: SPONTANEOUS INTRACEREBRAL HAEMORRHAGE

Chairpersons:

Valeria Caso, PERUGIA, ITALY

Charlotte Cordonnier, LILLE, FRANCE

**Causes and clinical course of spontaneous intracerebral
haemorrhages**

Valeria Caso, PERUGIA, ITALY

Work-up of intra-cerebral haemorrhages

Rustam Al-Shahi Salman, EDINBURGH, UK

**Microbleeds, small vessel disease and
intracerebral haemorrhages**

Charlotte Cordonnier, LILLE, FRANCE

Treatment and current perspectives

Daniel Hanley, BALTIMORE, USA

SATURDAY, JUNE 20, 2015

08:30-10:30

SYMPOSIUM 2 EPILEPSY AND THE INJURED BRAIN: CAUSES AND CONSEQUENCES

Chairpersons:

Matthew Walker, LONDON, UK

Annamaria Vezzani, MILAN, ITALY - TBC

The role of inflammation – animal and clinical data

Annamaria Vezzani, MILAN, ITALY

Managing seizures and seizure risk in the acutely injured

Martin Holtkamp, BERLIN, GERMANY

Predicting epilepsy risk after acute brain insults

Torbjörn Tomson, STOCKHOLM, SWEDEN

**Preventing epilepsy following an acute brain insult -
fact or fiction**

Matthew Walker, LONDON, UK

SYMPOSIUM 3 MODERN MOLECULAR GENETICS IN CLINICAL MYOLOGY

Chairpersons:

Zohar Argov, JERUSALEM, ISRAEL

Stephan Zierz, HALLE, GERMANY - TBC

Overview in epidemiology and classification in myology

Zohar Argov, JERUSALEM, ISRAEL

Myotonic dystrophies and upcoming therapies

Benedikt Schoser, MUNICH, GERMANY

Dystrophinopathies: from steroids to molecular therapy

Corrado Angelini, PADOVA, ITALY

**The value of next generation sequencing in diagnosing
neuromuscular disorders**

Volker Straub, NEWCASTLE, UK

SATURDAY, JUNE 20, 2015

11:00-12:30

FOCUSED WORKSHOP 1
INNOVATIVE APPROACH TO MS
THERAPY – ANTIGEN-INDUCED IMMUNE
TOLERANCE

Chairperson:

Krzysztof Selmaj, LODZ, POLAND

**Antigen-induced tolerance: Highly selective intervention
in MS treatment**

Lawrence Steinman, STANFORD, USA

**MS treatment with autologous myelin peptide-coupled
cells**

Roland Martin, ZURICH, SWITZERLAND

MS Treatment with myelin skin patients

Krzysztof Selmaj, LODZ, POLAND

FOCUSED WORKSHOP 2 MIGRAINE BIOMARKERS: FACTS, FICTION & FUTURE

Chairperson:

Jean Schoenen, LIÈGE, BELGIUM

Neurophysiological biomarkers

Jean Schoenen, LIÈGE, BELGIUM

Neuroimaging biomarkers

Arne May, HAMBURG, GERMANY

Genetic biomarkers

Michel Ferrari, LEIDEN, THE NETHERLANDS

Migraine is diagnosed on the basis of clinical criteria defined by the International Classification of Headache Disorders. It is common clinical experience, however, that migraine patients have varying expressions of symptoms and varying responses to therapies. Biomarkers would thus be of utmost importance to identify subgroups of migraineurs with common underlying disease mechanisms. In recent years, our knowledge on genetics, neuroimaging features and neurophysiological profiles of migraine patients has vastly expanded. It seems timely to examine what the correlations are between the clinical migraine phenotype and these biomarkers, and if and how they relate to each other. The workshop will allow synoptically reviewing the various biomarkers and providing elements of answers to these questions.

SATURDAY, JUNE 20, 2015

11:00-12:30

FOCUSED WORKSHOP 3 COGNITIVE DETERIORATION AFTER STROKE – DETECTION, PREVENTION AND TREATMENT

Chairperson:

Michael Brainin, KREMS, AUSTRIA

Definition and prevalence

Didier Leys, LILLE, FRANCE

Imaging and genetic predictors

Martin Dichgans, MUNICH, GERMANY

Intervention trials for prevention and treatment

Michael Brainin, KREMS, AUSTRIA

This workshop reports on recent advances in the area of post-stroke cognitive deterioration including its most frequent manifestations in clinical practice. Varying definitions used result in different prevalence rates and genetic as well as imaging markers allow us to improve the description of these disorders. Previously, cognitive deterioration following stroke was largely seen as inevitable but nowadays therapeutic options are discussed. Therefore, also ongoing clinical trials are reported as well as the results of some multi-interventional lifestyle adaptation trials.

SATURDAY, JUNE 20, 2015

11:00-12:30

FOCUSED WORKSHOP 4 METALS AND MOVEMENT DISORDERS

Chairperson:

Kailash Bhatia, LONDON, UK

Iron - NBIA's

Kailash Bhatia, LONDON, UK

Manganese

Vincenzo Bonifati, ROTTERDAM, THE NETHERLANDS

Copper - Wilson's disease

Anna Czlonkowska, WARSAW, POLAND

SATURDAY, JUNE 20, 2015

11:00-12:30

FOCUSED WORKSHOP 5 HUMAN SPATIAL ORIENTATION

Chairpersons:

Thomas Brandt, MUNICH, GERMANY

Lüder Deecke, VIENNA, AUSTRIA

Human spatial orientation: Theoretical aspects: how can we stand and move in the world around us?

Alain Berthoz, PARIS, FRANCE

Human spatial orientation: Neuro-oto- and ophthalmological aspects

Adolfo Bronstein, LONDON, UK

Human spatial orientation: Clinical aspects

Thomas Brandt, MUNICH, GERMANY

Our ability to orient ourselves in space appears trivial. If, however, we lack this awareness, we are disoriented – not in time or in person but in place. Spatial orientation defines our body orientation relative to the surrounding space – at rest and during locomotion and navigation. Evolutionarily speaking, human survival on planet Earth critically depends on maintaining spatial orientation. Vestibular and visual cues give the coordinates of the brain's continuous representation of the individual within the 3-D environment, making orientation and navigation in space at all possible. The present workshop will elucidate the neurophysiology of spatial orientation and its disorders.

SATURDAY, JUNE 20, 2015

11:00-12:30

FOCUSED WORKSHOP 6 NEUROGENETICS: WHO, WHEN AND WHICH TEST?

Chairperson:

Alexandra Dürr, PRAIS, FRANCE

Genetics in Parkinson's disease

Christine Klein, LÜBECK, GERMANY

Genetics of motorneuron disease

Richard W. Orrell, LONDON, UK

Genetics of cerebellar ataxias

Alexandra Dürr, PARIS, FRANCE

1. Understand the genetic heterogeneity of three groups of diseases, Parkinson Disease, dementias and cerebellar ataxias and recognize phenotype-genotype correlations
2. Learn how to interact with the geneticist for molecular and genetic testing strategies, understand the use of different techniques for the detection of variants and how to determine their potential pathogenicity
3. Discuss the data generated by the next generation sequencing and their clinical use
4. Elaborate and anticipate genetic testing results or their absence in clinical practice according to international guidelines

SATURDAY, JUNE 20, 2015

11:00-12:30

FOCUSED WORKSHOP 7 NEUROPHYSIOLOGICAL EVALUATION OF AUTONOMIC NERVOUS SYSTEM DYSFUNCTION

Chairperson:

Vincenzo Donadio, BOLOGNA, ITALY

**ANS evaluation in peripheral nervous system
dysfunctions**

Vincenzo Donadio, BOLOGNA, ITALY

ANS evaluation in central nervous system dysfunctions

Christopher Mathias, LONDON, UK

ANS responses to stress

Mikael Elam, GOTHENBURG, SWEDEN

This workshop will address the diagnosis of autonomic dysfunctions by neurophysiological techniques. Autonomic dysfunctions involve protean clinical manifestation including cardiovascular, gastrointestinal, urogenital, thermoregulatory and pupillomotor symptoms and the diagnosis of these dysfunctions is an important clinical issue.

At the completion of this session, participants should be able to:

1. Recognize and diagnosis peripheral autonomic dysfunctions
2. Differentiate central from peripheral autonomic dysfunctions
3. Discuss the spectrum of abnormal autonomic reactivity to stress

SATURDAY, JUNE 20, 2015

11:00-12:30

FOCUSED WORKSHOP 8 GUT AND BRAIN IN PD AND MSA

Chairperson:

Carlo Colosimo, ROME, ITALY

Constipation: an emerging risk factor for PD?

Carlo Colosimo, ROME, ITALY

Diagnosis and management of gastrointestinal dysfunction in MSA and PD

Walter Struhal, LINZ, AUSTRIA

Alpha-synuclein propagation in PD: role of enteric nervous system pathology

Janice Houlton, LONDON, UK

At the completion of this session, participants should be able to:

- 1) To provide a critical summary of current evidence regarding constipation as an early disease marker versus true risk factor for PD
- 2) To address the various manifestations of GIT dysfunction and their state of the art treatment in MSA and PD focusing on constipation
- 3) To elucidate the evidence favouring enteric seeding and propagation of synuclein pathology to CNS sites in PD

SATURDAY, JUNE 20, 2015

11:00-12:30

INTERACTIVE SESSION 1 UPDATE ON VESTIBULAR DISORDERS

Chairperson:

Alexandre Bisdorff, ESCH SUR ALZETTE, LUXEMBURG

**Functional vestibular anatomy and neuro-otologic
bedside testing**

Michael Strupp, MUNICH, GERMANY

Neuro-otology in the emergency room

Barry Seemungal, LONDON, UK

Diagnosis and treatment of vestibular migraine

Alexandre Bisdorff, ESCH SUR ALZETTE, LUXEMBOURG

SATURDAY, JUNE 20, 2015

11:00-12:30

HANDS-ON COURSE 1 NEUROPHYSIOLOGY I – BASIC

Chairperson:

Josep Valls-Sole, BARCELONA, SPAIN

Nerve conduction studies

Reinhard Dengler, HANNOVER, GERMANY

The study of reflexes in clinical practice

Josep Valls-Sole, BARCELONA, SPAIN

Up to 50 persons – Sold out!

This course is supported by Natus Medical Inc.

SATURDAY, JUNE 20, 2015

14:45-16:15

ORAL SESSION:
MOVEMENT DISORDERS 1

Chairpersons:

TBA

- O1101** **Parkinson bradykinesia correlates with EEG background frequency and perceptual forward projection in visual motion**
14:45
M. Beudel, L. Roosma, O. Martinez Manzanera, T. van Laar, N. Maurits, B. de Jong
GRONINGEN, NETHERLANDS
- O1102** **Genetic variation in DRD3 and impulse control disorders in Parkinson's disease**
15:00
D. Boleixa, A. Gonçalves, A. Bettencourt, B. Leal, C. Carvalho, S. Brás, A. Mendes, N.M.D.S. Vila-Chã, J. Damasio, I. Moreira, J. Fernandes, P.P. Costa, S. Cavaco, B. Silva
PORTO, PORTUGAL
- O1103** **Prolonged release oxycodone/naloxone (OXN PR) for the treatment of severe Parkinson's disease (PD)-related pain: a double-blind, randomised, placebo-controlled study**
15:15
K. R. Chaudhuri¹, O. Rascol², P. Martinez-Martin³, M. Lomax⁴, J. DeCesare⁴, M. Hopp⁵, C. Trenkwalder⁶
¹LONDON, UNITED KINGDOM, ²TOULOUSE, FRANCE, ³MADRID, SPAIN, ⁴CAMBRIDGE, UNITED KINGDOM, ⁵LIMBURG, GERMANY, ⁶KASSEL, GERMANY
- O1104** **The 22q11.2 microdeletion as a genetic cause to consider in case of early-onset Parkinson's disease.**
15:30
B. Dufournet¹, K. NGUYEN¹, D. Grabi², E. Broussolle³, S. Drapier⁴, M. Borg⁵, J.-L. Houeto⁶, C. Marelli Tosi⁷, L. Defebvre⁶, J.-P. Azulay¹
¹MARSEILLES, ²PARIS, ³LYONS, ⁴RENNES, ⁵NICE, ⁶LILLE, ⁷MONTPELLIER, FRANCE
- O1105** **A predictive metabolic marker of apathy following subthalamic nucleus deep brain stimulation in Parkinson's disease**
15:45
A. Eusebio, A. Gesquière-Dando, E. Guedj, R. Carron, A. Loundou, T. Witjas, F. Fluchère, J. Regis, J.-P. Azulay
MARSEILLES, FRANCE
- O1106** **Do late-stage Parkinson's disease patients still respond to levodopa?**
16:00
M. Fabbri, M. Coelho, D. Abreu, L. Guedes, N. Gonçalves, M. Rosa, J. Ferreira
LISBON, PORTUGAL

ORAL SESSION: MS AND RELATED DISORDERS 1

Chairpersons:

Ralf Gold, BOCHUM, GERMANY

Hanne Flinstad Harbo, OSLO, NORWAY

O1107 Fifty years untreated prognosis of multiple sclerosis based on an incidence cohort

14:45

O. Andersen, B. Skoog, B. Runmarker, V. Lisovskaja, O. Nerman, H. Tedeholm
GOTHENBURG, SWEDEN

O1108 Myelin regeneration improves clinical prognosis in multiple sclerosis: a longitudinal PET study with 11C-PIB

15:00

B. Bodini¹, M. Veronese², D. Garcia-Lorenzo¹, M. Battaglini³, L. Freeman¹, A.-C. Papeix¹, B. Zalc¹, M. Tchikviladze¹, C. Lubetzki¹, M. Bottlaender⁴, F. Turkheimer², B. Stankoff¹
¹PARIS, FRANCE, ²LONDON, UNITED KINGDOM, ³SIENNA, ITALY, ⁴ORSAY, FRANCE

O1109 Long-term assessment of No Evidence of Disease Activity (NEDA) in patients with relapsing-remitting multiple sclerosis

15:15

N. De Stefano¹, M.L. Stromillo¹, A. Giorgio¹, M.L. Bartolozzi², M. Battaglini¹, M. Baldini², E. Portaccio³, M.P. Amato³, M.P. Sormani⁴
¹SIENA, ²EMPOLI, ³FLORENCE, ⁴GENOA, ITALY

O1110 Long-term efficacy of delayed-release dimethyl fumarate in newly diagnosed patients with RRMS: an integrated analysis of DEFINE, CONFIRM, and ENDORSE

15:30

R. Gold¹, G. Giovannoni², J.T. Phillips³, R.J. Fox⁴, A. Zhang⁵, N.C. Kurukulasuriya⁵
¹BOCHUM, GERMANY, ²LONDON, UNITED KINGDOM, ³DALLAS, USA, ⁴CLEVELAND, USA, ⁵CAMBRIDGE, USA

O1111 The effects of natalizumab and fingolimod on clinical, neuropsychological and MRI measures in relapsing remitting multiple sclerosis: a one-year comparative study

15:45

M.A. Rocca¹, P. Preziosa¹, G. Riccitelli¹, M. Rodegher¹, M. Copetti², L. Muiola¹, F. Mele¹, A. Falini¹, G. Comi¹, M. Filippi¹
¹MILAN, ²SAN GIOVANNI ROTONDO, ITALY

SATURDAY, JUNE 20, 2015

14:45-16:15

Oral Session: MS and related disorders 1
(condt.)

Chairpersons:

Ralf Gold, BOCHUM, GERMANY

Hanne Flinstad Harbo, OSLO, NORWAY

.....
O1112 36 months PANGAEA: a 5-year non-interventional study

16:00 of safety, efficacy and pharmacoeconomic data for fingolimod patients in daily clinical practice

T. Ziemssen¹, H. Albrecht², L. Klotz³, S. Schmidt⁴,

H.-J. Schwarz², B. Tackenberg⁵, C. Cornelissen⁶

¹DRESDEN, ²MUNICH, ³MÜNSTER, ⁴BONN, ⁵MARBURG,

⁶NUREMBERG, GERMANY

ORAL SESSION: NEUROGENETICS

Chairpersons:

Alexandra Durr, PARIS, FRANCE

Massimo Pandolfo, BRUSSELS, BELGIUM

O1113

14:45

Exome array GWAS in 10,000 Germans identifies association between MUC22 and multiple sclerosis

D. Buck¹, T. Dankowski², A. Bayas³, R. Gold⁴, C. Heesen⁵, R. Hohlfeld¹, B.C. Kieseier⁶, W. Lieb⁷, V. Limmroth⁸, R. Linker⁹, B. Müller-Myhsok¹, M.M. Nöthen¹⁰, F. Paul¹¹, M. Stange¹², B. Tackenberg¹³, F. Then Bergh¹⁴, H. Tumani¹⁵, F. Weber¹, H. Wiendl¹⁶, B. Wildemann¹⁷, U.K. Zettl¹⁸, U. Ziemann¹⁹, F. Zipp²⁰, A. Ziegler², B. Hemmer¹
¹MUNICH, ²LÜBECK, ³AUGSBURG, ⁴BOCHUM, ⁵HAMBURG, ⁶DÜSSELDORF, ⁷KIEL, ⁸COLOGNE, ⁹ERLANGEN, ¹⁰BONN, ¹¹BERLIN, ¹²HANOVER, ¹³MARBURG, ¹⁴LEIPZIG, ¹⁵ULM, ¹⁶MÜNSTER, ¹⁷HEIDELBERG, ¹⁸ROSTOCK, ¹⁹TÜBINGEN, ²⁰MAINZ, GERMANY

O1114

15:00

First description of Leber's hereditary optic neuropathy in association with the 3243A>G "MELAS" mutation in the mitochondrial DNA MTTL1 gene

C. Catarino¹, C. Thiels², C. Köhler², T. Lücke², T. Klopstock¹
¹MUNICH, ²BOCHUM, GERMANY

O1115

15:15

Familial dyskinesia with facial myokymia due to ADCY5

mutation: treatment with propranolol

C. Küpper, C. Gallenmüller, W. Müller-Felber, T. Haack, T.-M. Strom, T. Meitinger, T. Klopstock
MUNICH, GERMANY

O1116

15:30

Cognitive progression in patients with genetic forms of

Parkinson's disease treated with deep brain stimulation: a retrospective imaging genetics study

G. Mangone¹, M.F. Cormier-Dequaire¹, K. Tahiri¹, J. Kraemmer¹, M.-L. Welter¹, A. Welaratne¹, C. Karachi¹, M.S. Navarro¹, V. Guillemot¹, A. Tenenhaus¹, J. Gueguan¹, V. Perlberg¹, S. Fernandez-Vidal¹, D. Garcia-Lorenzo¹, F. Gargouri¹, S. Lehericy¹, F. Pineau¹, S. Lesage¹, P. Pelissier², A. Castrioto², P. Krack², C. Delaigue³, F. Durif³, A. Brice¹, J.-C. Corvol¹
¹PARIS, ²GRENOBLE, ³CLERMONT-FERRAND, FRANCE

SATURDAY, JUNE 20, 2015

14:45-16:15

Oral Session: Neurogenetics
(condt.)

Chairpersons:

Alexandra Durr, PARIS, FRANCE

Massimo Pandolfo, BRUSSELS, BELGIUM

O1117 A four-year longitudinal study of postural stability
15:45 and eye movements in premanifest subjects for
spinocerebellar Ataxia type 1 and 2

L. Nanetti, D. Alpini, M. Panzeri, A. Castaldo, V. Mattei,
C. Gellera, C. Mariotti
MILAN, ITALY

O1118 Mutation in O-linked N-acetylglucosaminetransferase
16:00 (OGT) gene is associated with microcephaly, hypothy-
roidism, developmental delay, epilepsy, nystagmus
and abnormal urine oligosaccharide pattern.

F. Serajee, A. Huq
DETROIT, USA

ORAL SESSION: NEUROTRAUMATOLOGY AND -REHABILITATION

Chairpersons:

Pieter Vos, NIJMEGEN, NETHERLANDS

TBA

-
- O1119** **Incidence of Headache in retired NFL players.**
14:45 **Correlation with diffusion tensor MRI imaging and neuropsychological testing.**
 F. Conidi
 STUART, USA
- O1120** **Shaping early reorganization of neural networks promotes motor function after stroke**
15:00 **L.J. Volz¹, A.K. Rehme¹, J. Michely¹, C. Nettekoven², S.B. Eickhoff³, G.R. Fink¹, C. Grefkes¹**
¹COLOGNE, ²JUELICH, ³DÜSSELDORF, GERMANY
- O1121** **Network predictors of motor and language recovery after stroke**
15:15 **A. Guggisberg, P. Nicolo, S. Rizk, A. Schnider**
 GENEVA, SWITZERLAND
- O1122** **Multimodal neuroimaging study of hand motor recovery prognosis in chronic ischemic stroke patients**
15:30 **M. Nazarova¹, M.A. Piradov¹, P. Novikov¹, R. Konovalov¹, E. Blagovechtchenski¹, V. Nikulin²**
¹MOSCOW, RUSSIAN FEDERATION, ²BERLIN, GERMANY
- O1123** **Brain functional changes after a somatosensory discrimination training in healthy young subjects**
15:45 **E. Sarasso, F. Agosta, P. Adamo, F. Temporiti, A. Falini, R. Gatti, M. Filippi**
 MILAN, ITALY
- O1124** **Combining non-invasive brain stimulation (dual-tDCS) and motor skill learning induces a lasting increase of rs-fMRI functional connectivity in stroke patients**
16:00 **Y. Vandermeeren¹, L. Dricot², P. Laloux¹, P. Desfontaines³, F. Evrard⁴, A. Peeters², J. Jamart¹, S. Lefebvre¹**
¹YVOIR, ²BRUSSELS, ³LIEGE, ⁴OTTIGNIES, BELGIUM

SATURDAY, JUNE 20, 2015

14:45-16:15

ORAL SESSION:
PERIPHERAL NERVE DISORDERS 1

Chairpersons:

Isabel Illa, BARCELONA, SPAIN

Jean Marc Leger, PARIS, FRANCE

O1125 **Gene therapy with neurotrophic factors improved recovery after sciatic nerve injury in mice**
14:45
F. Benninger¹, M. Glat¹, T. Ben-Zur¹, Y. Barhum¹, E. Kogan¹, I. Steiner¹, D. Yaffe², D. Offen¹
¹PETACH TIKVA, ²REHOVOT, ISRAEL

O1126 **Exome sequencing in a patient with Charcot-Marie-Tooth disease**
15:00
G.J. Braathen, K. Tveten, H. Høyer, Ø.L. Holla, Ø.L. Busk SKIEN, NORWAY

O1127 **CMT genetic distribution in Spanish TREAT-CMT consortium**
15:15
R. Sivera¹, C. Casasnovas², C. Marquez³, S.I. Pascual Pascual⁴, M. Barrerio¹, M.A. Alberti², C. Homedes², L. Villareal³, M. Garcia⁴, J.F. Arpa Gutierrez⁴, J.F. Vázquez Costa¹, N. Muelas¹, M.J. Chumillas¹, F. Palau¹, C. Espinos¹, T. Sevilla¹
¹VALENCIA, ²BARCELONA, ³SEVILLE, ⁴MADRID, SPAIN

O1128 **Identification of a novel gene involved in Charcot-Marie-Tooth disease**
15:30
R. Sivera, T. Sevilla, V. Lupo, P. Sancho, J.J. Vilchez, F. Palau, C. Espinos
 VALENCIA, SPAIN

O1129 **Intraneural and intrathecal gene delivery using a Schwann cell targeted lentiviral vector for treating inherited demyelinating neuropathies**
15:45
K. Kleopa, A. Kagiava, S. Bashardes, J. Richter, C. Christodoulou, I. Sargiannidou
 NICOSIA, CYPRUS

O1130 **Rituximab is effective in treatment-resistant CIDP with IgG4 antibodies against paranodal proteins**
16:00
 L.A. Querol Gutierrez¹, R. Rojas-Garcia¹, J. Diaz-Manera¹, J. Barcena², J. Pardo Fernandez³, A. Ortega-Moreno⁴, M.J. Sedano⁵, L. Sero-Ballesteros¹, A. Carvajal¹, N. Ortiz⁶, E. Gallardo¹, I. Illa¹
¹BARCELONA, ²BILBAO, ³SANTIAGO DE COMPOSTELA, ⁴GRANADA, ⁵SANTANDER, ⁶REUS, SPAIN

ORAL SESSION: CLINICAL NEUROPHYSIOLOGY

Chairpersons:

Christian Krarup, COPENHAGEN, DENMARK

Josep Valls-Solé, BARCELONA, SPAIN

O1201 Effects of acetyl-DL-leucine on the cerebral activation pattern in cerebellar ataxia (FDG-PET study)

16:45

S. Becker-Bense, R. Feuerecker, G. Xiong, K. Feil, P. Bartenstein, M. Strupp, M. Dieterich
MUNICH, GERMANY

O1202 Modulation of cortico-cortical functional connectivity with intracerebral paired-pulses electrical stimulations

17:00

S. Boulogne, N. Andre-Obadia, P. Ryvlin, S. Rheims
LYONS, FRANCE

O1203 Comparison of motor cortex excitability in Progressive supranuclear palsy, Parkinson's disease and healthy controls: a transcranial magnetic stimulation study

17:15

M. Fichera, E. Houdayer, F. Avantaggiato, R. Chieffo, G. Comi, M.A. Volonté, L. Leocani
MILAN, ITALY

O1204 Sensitivity of single fibre electromyography in ocular myasthenia

17:30

M.P. Giannoccaro, V. Donadio, V. di Stasi, P. Avoni, R. Liguori
BOLOGNA, ITALY

O1205 QEEG and apathy in patients with PD: alpha power changes in frontal and temporal regions

17:45

A. Meyer, M. Chaturvedi, U. Gschwandtner, F. Hatz, K. Nowak, P. Fuhr
BASEL, SWITZERLAND

O1206 Correlation between electrodiagnostic features and genotype in Kennedy's disease (SBMA): a study of a large population

18:00

M. Volpe¹, G. Zara¹, G. Querin¹, C. Bertolin¹, E. da Re¹, F. Zoccarato¹, E. Volpato¹, D. Pareyson², M. Ermani¹, G. Sorarù¹
¹PADUA, ²MILAN, ITALY

SATURDAY, JUNE 20, 2015

16:45-18:15

ORAL SESSION:
MOVEMENT DISORDERS 2

Chairpersons:

Joaquim Ferreira, LISBON, PORTUGAL

Antonella Macerollo, BARI, ITALY

O1207 Congenital pyramidal signs and cerebellar ataxia with
16:45 abnormal pyramidal decussation – a new syndromeA. Castro Caldas, S. Reimão, L. Correia Guedes,
M.M. Rosa, J. Ferreira, M.V.S. Coelho
LISBON, PORTUGAL**O1208** Motor, non-motor and cognitive features in idiopathic
17:00 REM sleep behaviour disorder mirror those observed
in Parkinson's diseaseM. Rolinski¹, N. Zokaei¹, M. Lawton², S. Evetts¹, F. Baig¹,
C. Ruffman¹, C. Mackay¹, T. Quinnell³, Z. Zaiwalla¹,
Y. Ben-Shlomo², M. Husain¹, M. Hu¹
¹OXFORD, ²BRISTOL, ³PAPWORTH, UNITED KINGDOM**O1209** Widespread functional, but not structural, changes in
17:15 patients with idiopathic REM sleep behaviour disorderM. Rolinski¹, L. Griffanti¹, K. Szewczyk-Krolikowski¹,
R. Menke¹, T. Quinnell², Z. Zaiwalla¹, C. Mackay¹, M. Hu¹
¹OXFORD, ²PAPWORTH, UNITED KINGDOM**O1210** Discrimination in dystonia: time for a rethink?**17:30**A. Sadnicka¹, C. Daum¹, S. Manohar², J. Rothwell¹,
M. Edwards¹
¹LONDON, ²OXFORD, UNITED KINGDOM**O1211** Brain plasticity after implanted drop foot stimulator in
17:45 chronic strokeA. Thibaut¹, O. Gosseries², S. Laureys³
¹BELGIUM, ²MADISON, USA, ³LIEGE, BELGIUM**O1212** Evolution of mild parkinsonian motor signs in a
18:00 longitudinal population-based cohortS. Tunc¹, J. Hampf¹, J. Graf¹, E.-J. Vollstedt¹, V. Tadic¹,
E. Warrlich¹, C. Bibergeil¹, N. Bruggemann¹, J. Hagenah²,
C. Klein¹, M. Kasten¹
¹LÜBECK, ²HEIDE, GERMANY

ORAL SESSION: MS AND RELATED DISORDERS 2

Chairpersons:

Maria Trojano, BARI, ITALY

Slavica Vujisic, PODGORICA, MONTENEGRO

O1213

16:45

Feasibility and effectiveness of home-based, computerised cognitive rehabilitation in multiple sclerosis - a functional MRI study

J. Campbell¹, M. Cercignani¹, D. Langdon², W. Rashid¹
¹BRIGHTON, ²LONDON, UNITED KINGDOM

O1214

17:00

Neuroprotection with phenytoin in acute optic neuritis: results of a phase II randomised controlled trial.

R. Raftopoulos¹, S. Hickman², A. Toosy¹, B. Sharrack², S. Mallik¹, D. Altmann¹, P. Malladi¹, M. Koltzenburg¹, C. Wheeler-Kingshott¹, K. Schmierer¹, G. Giovannoni¹, D. Miller¹, R. Kapoor¹
¹LONDON, ²SHEFFIELD, UNITED KINGDOM

O1215

17:15

Rate of brain volume loss under long-term delayed-release dimethyl fumarate treatment in relapsing-remitting multiple sclerosis patients: results from the ENDORSE study

L. Kappos¹, R.J. Fox², R. Gold³, D.L. Arnold⁴, J. Potts⁵, A. Zhang⁵, N.C. Kurukulasuriya⁵
¹BASEL, SWITZERLAND, ²CLEVELAND, USA, ³BOCHUM, GERMANY, ⁴MONTREAL, CANADA, ⁵CAMBRIDGE, USA

O1216

17:30

Effect of MD1003 (high doses of biotin) in progressive multiple sclerosis: results of a pivotal phase III randomized double blind placebo controlled study

A. Tourbah¹, C. Lebrun-Frenay², G. Edan³, M. Clanet⁴, A.-C. Papeix⁵, S. Vukusic⁶, J. de Seze⁷, M. Debouverie⁸, O. Gout⁹, P. Clavelou¹⁰, G.L. Defer¹¹, D. Laplaud¹², T. Moreau¹³, P. Labauge¹⁴, B. Brochet¹⁵, M.M.F. Sedel⁵, J. Pelletier¹⁶
¹RHEIMS, ²NICE, ³RENNES, ⁴TOULOUSE, ⁵PARIS, ⁶LYONS, ⁷STRASBOURG, ⁸NANCY, ⁹PARIS, ¹⁰CLERMONT-FERRAND, ¹¹CAEN, ¹²NANTES, FRANCE, ¹³DIJON, ¹⁴MONTPELLIER, ¹⁵BORDEAUX, ¹⁶MARSEILLES, FRANCE

SATURDAY, JUNE 20, 2015

16:45-18:15

Oral Session: MS and related disorders 2
(condt.)

Chairpersons:

Maria Trojano, BARI, ITALY

Slavica Vujisic, PODGORICA, MONTENEGRO

O1217 **A randomized, blinded, parallel-group phase-2 study exploring the efficacy, safety, and tolerability of multiple natalizumab dosing regimens in patients with relapsing multiple sclerosis (REFINE)**

17:45

M. Trojano¹, L. Ramió-Torrentà², L.M.E. Grimaldi³, C. Lubetzki⁴, S. Schippling⁵, K. Evans⁶, S. Gheuens⁶, K. Muralidharan⁶, A. Natarajan⁶, D. Mikol⁶
¹BARI, ITALY, ²GIRONA, SPAIN, ³CEPALÙ, ITALY, ⁴PARIS, FRANCE, ⁵ZURICH, SWITZERLAND, ⁶CAMBRIDGE, USA

O1218 **Daclizumab High-Yield Process (DAC HYP) vs. interferon beta-1a in patients with highly active disease: DECIDE study results**

18:00

H. Wiendl¹, L. Kappos², K. Selmaj³, E. Havrdova⁴, J. Rose⁵, K. Riester⁶, L.C. Tsao⁷, S. Greenberg⁷, J. Elkins⁶
¹MUNSTER, GERMANY, ²BASEL, SWITZERLAND, ³LODZ, POLAND, ⁴PRAGUE, CZECH REPUBLIC, ⁵SALT LAKE CITY, USA, ⁶CAMBRIDGE, USA, ⁷REDWOOD CITY, USA

ORAL SESSION: NEURO-OPHTHALMOLOGY/-OTOLOGY

Chairpersons:

Marianne Dieterich, MUNICH, GERMANY

TBA

O1219

16:45

Using transcranial magnetic stimulation (TMS) to probe effects of visual motion adaptation on primary visual cortex (V1) excitability in bilateral vestibular failure patients

H. Ahmad, R. Roberts, M. Patel, Q. Arshad, A. Bronstein
LONDON, UNITED KINGDOM

O1220

17:00

Retinal pathology in idiopathic moyamoya angiopathy detected by optical coherence tomography

P. Albrecht¹, C. Blasberg¹, S. Lukas², M. Ringelstein¹,
A.-K. Müller¹, E.-M. Kadas³, D. Finis¹, R. Guthoff¹, O. Aktas¹,
H.-P. Hartung¹, F. Paul³, A. Brandt³, P. Berlit⁴, A. Methner⁵,
M. Krämer⁴

¹DÜSSELDORF, GERMANY, ²ZÜRICH, SWITZERLAND, ³BERLIN,
⁴ESSEN, ⁵MAINZ, GERMANY

O1221

17:15

Retina examination in neurodegenerative diseases

U.A. Kayabasi¹, R.C. Sergott²

¹ISTANBUL, TURKEY, ²PHILADELPHIA, USA

O1222

17:30

What is post-concussion dizziness?

Expert neuro-otological assessment in acute Traumatic Brain Injury (TBI)

B.M. Seemungal, Q. Arshad, H. Paine, J. Milburn,
S. Wolstenholme, K. Collins, H.J. Marcus, M. Wilson
LONDON, UNITED KINGDOM

O1223

17:45

A novel diagnostic tool for myasthenia gravis: ocular vestibular evoked myogenic potentials (oVEMP)

Y. Valko¹, S. Rosengren², H. Jung¹, D. Straumann¹,
K. Landau¹, K. Weber¹

¹ZÜRICH, SWITZERLAND, ²SYDNEY, AUSTRALIA

O1224

18:00

Anti-compensatory saccades as an indicator of peripheral vestibular function in a new complementary video head impulse test paradigm

H.G. MacDougall¹, L.A. McGarvie¹, G.M. Halmagyi¹,
S.J. Rogers¹, L. Manzari², A.M. Burgess¹, I.S. Curthoys¹,
K.P. Weber³

¹SYDNEY, AUSTRALIA, ²CASSINO, ITALY, ³ZÜRICH, SWITZERLAND

SATURDAY, JUNE 20, 2015

16:45-18:15

ORAL SESSION:
SLEEP DISORDERS

Chairpersons:

Claudio Bassetti, BERN, SWITZERLAND

Pierre Maquet, LIÈGE, BELGIUM

- 01225** **Post tick-borne encephalitis (TBE) vaccination narcolepsy-cataplexy**
16:45
H. Hidalgo Pareja¹, J. Mathis², C. Bassetti², U. Kallweit²
¹KATZENELNBOKEN, GERMANY, ²BERNE, SWITZERLAND
- 01226** **PDSS-2 cut-off scores for the severity of sleep disturbances in PD patients**
17:00
M.-L. Muntean¹, H. Benes², F. Sixel-Döring¹,
C. Trenkwalder¹
¹KASSEL, GERMANY, ²SCHWERIN, GERMANY
- 01227** **Narcolepsy Type-1 and idiopathic generalized epilepsy: diagnostic and therapeutic challenges in dual cases.**
17:15
S. Baiardi¹, S. Vandi¹, L. Alvisi¹, F. Pizza¹, L. Toscani²,
E. Zambrelli³, P. Tinuper¹, R. Liguori¹, G. Plazzi¹
¹BOLOGNA, ²FLORENCE, ³MILAN, ITALY
- 01228** **Obstructive sleep apnoea (OSA) and circadian variation in the timing of stroke onset**
17:30
D. Sangalli, B. Corrà, L. Adobbati, P. Mattaliano,
C. Lombardi, G. Parati, V. Silani
MILAN, ITALY
- 01229** **Restless legs syndrome patients have higher values of nocturnal systolic blood pressure**
17:45
M. Sieminski¹, M. Partinen²
¹GDANSK, POLAND, ²HELSINKI, FINLAND
- 01230** **Performance decline during chronic sleep deprivation is associated with decreasing cerebral oxygen level in adolescents under real-life school conditions**
18:00
Z. Zhang¹, C. Lienhard², Y. Kindler², M. Qi¹, G. Hügli¹,
R. Khatami¹
¹BARMELWEID, ²AARAU, SWITZERLAND

SATURDAY, JUNE 20, 2015

14:45-18:15

TEACHING COURSE 1 BASIC MANAGEMENT ISSUES OF STROKE – LEVEL 1

Chairperson:

Natan Bornstein, TEL-AVIV, ISRAEL

Management of acute ischaemic stroke

Anna Czlonkowska, WARSAW, POLAND

Management of acute haemorrhagic stroke

Christian Stapf, PARIS, FRANCE

Secondary stroke prevention

Natan Bornstein, TEL-AVIV, ISRAEL

Stroke in the young

Bo Norrving, LUND, SWEDEN

This course will provide current and updated information about a range of issues in stroke management and treatment. The current treatment of acute ischemic and haemorrhagic stroke will be discussed as well as secondary stroke prevention and unique issues of young stroke management.

The course will include the most updated information including recent results of RCTs and current guidelines on the topics.

SATURDAY, JUNE 20, 2015

14:45-18:15

TEACHING COURSE 2 CURRENT TREATMENTS IN NEUROLOGY I – LEVEL 1

Chairperson:

Gavin Giovannoni, LONDON, UK

**Valproate and pregnancy: update and new EMA
guidance**

Torbjörn Tomson, STOCKHOLM, SWEDEN

**Rituximat or other MAPs: why, where, when and how
outside of MS: how to use these drugs, and when. Side
effects**

Gavin Giovannoni, LONDON, UK

Stroke: stent retriever in cerebral artery occlusions

Alain Bonafé, MONTPELLIER, FRANCE

Neuroprosthetics

Alireza Gharabaghi, TÜBINGEN, GERMANY

Text fehlt

SATURDAY, JUNE 20, 2015

14:45-18:15

TEACHING COURSE 3 NEW ADVANCES IN THE TREATMENT OF IMMUNE MEDIATED NEUROPATHIES – LEVEL 3

Chairperson:

Eduardo Nobile-Orazio, MILAN, ITALY

Guillain-Barré syndrome:

Pieter van Doorn, ROTTERDAM, THE NETHERLANDS

**Chronic inflammatory demyelinating
polyradiculoneuropathy**

Peter Van den Bergh, BRUSSELS, BELGIUM

Multifocal motor neuropathy

Eduardo Nobile-Orazio, MILAN, ITALY

Paraproteinemic neuropathy

Jean-Marc Léger, PARIS, FRANCE

This course will be held in cooperation with the Peripheral Nerve Society (PNS).

This course is designed for trainees or practitioners wishing to update and develop their knowledge in the treatment of immune mediated neuropathies. The speakers will initially address when to start treatment in these neuropathies and will subsequently review the data from the most recent trials and reviews on their treatment. The cost –utility aspect will be addressed, including an analysis of the cost and potential adverse events of these therapies. The long –term treatment and the approach in patients not responsive to initial treatment will be also addressed. At the end of the course, participants will improve their capacities in the therapeutic approach to these neuropathies.

SATURDAY, JUNE 20, 2015

14:45-18:15

TEACHING COURSE 4 DIAGNOSIS AND DIFFERENTIAL DIAGNOSIS OF AMYOTROPHIC LATERAL SCLEROSIS (ALS) - LEVEL 2

Chairpersons:

Albert C. Ludolph, ULM, GERMANY

Vincenzo Silani, MILAN, ITALY

The spectrum of clinical phenotypes

Albert C. Ludolph, ULM, GERMANY

The role of clinical neurophysiology

Markus Weber, ST. GALLEN, SWITZERLAND

The role of genetics

Vincenzo Silani, MILAN, ITALY

The role of neuropsychology

Sharon Abrahams, EDINBURGH, UK

Diagnosis of amyotrophic lateral sclerosis (ALS) is considered difficult by many neurologists. However, recent progress, in particular with regard to differential diagnosis, has made it a comparatively easy diagnosis which can be done in early stages. The knowledge of clinical phenotypes was refined during the past decades; MRI is a valuable aid in differential diagnosis, the same as true for clinical neurophysiology. Genetics contributes to the diagnosis, but also adds some ambiguities. Since the relation of ALS and frontotemporal dementias is now widely accepted, there is an increasing role of neuropsychology.

SATURDAY, JUNE 20, 2015

14:45-18:15

TEACHING COURSE 5 EPILEPSY - BASIC APPROACH TO A SEIZING PATIENT - LEVEL 1

Chairperson:

Erik Tauboll, OSLO, NORWAY

Clinical, EEG and imaging diagnosis of epileptic seizures

Milan Brazdil, BRNO, CZECH REPUBLIC

Aetiologies of seizures in clinical practice

Erik Tauboll, OSLO, NORWAY

Rational choice of antiepileptic drugs

Elinor Ben-Menachem, GOTHENBURG, SWEDEN

When to start (and stop) antiepileptic drugs?

Tony Marson, LIVERPOOL, UK

SATURDAY, JUNE 20, 2015

14:45-18:15

TEACHING COURSE 6 THE AGEING BRAIN – LEVEL 1

Chairperson:

Marco Düring, MUNICH, GERMANY

Cognitive ageing

Shu-Chen Li, DRESDEN, GERMANY - TBC

Imaging brain ageing

Marco Düring, MUNICH, GERMANY

The genetic architecture of successful brain ageing

Helena Schmidt, GRAZ, AUSTRIA

The ageing brain and neurodegeneration

Sebastian Grönke, COLOGNE, GERMANY

Aging populations around the globe represent major challenges for society and healthcare systems. Brain health plays a major role in maintaining wellbeing as we age. This teaching course covers recent advancements in multiple areas of brain aging. Topics include psychological aspects, the measurement of brain aging using neuroimaging techniques as well as genetic and cellular aspects that facilitate our understanding of brain aging and might provide targets for future interventions.

SUNDAY, JUNE 21, 2015

SESSIONS

**88. Kongress
der Deutschen Gesellschaft
für Neurologie
mit Fortbildungsakademie**

**23. – 26. September 2015
Düsseldorf**



**Mensch
im Blick
Gehirn
im Fokus**

**Online-Programm und
Anmeldung unter:
www.dgnkongress.org**

**Besuchen
Sie uns am
Stand B52!**

SUNDAY, JUNE 21, 2015

08:30-10:30

HANDS-ON COURSE 2 NEUROPHYSIOLOGY II – BASIC

Chairperson:

Christian Krarup, COPENHAGEN, DENMARK

Electromyography – conventional

Christian Krarup, COPENHAGEN, DENMARK

Electromyography – single fibre

Sanjeev Nandedkar, HOPEWELL JUNCTION, USA

This course is supported by Natus Medical Inc.

Sold out!

SUNDAY, JUNE 21, 2015

11:00-12:30

PRESIDENTIAL PLENARY SYMPOSIUM :
HOT TOPICS IN NEUROLOGICAL
SCIENCES

Chairpersons:

Günther Deuschl, KIEL, GERMANY

Wolfgang Oertel, MARBURG, GERMANY



Translational research for biomarkers in multiple sclerosis

Xavier Montalban, BARCELONA, SPAIN

The concept of hypo- and hyperdopaminergic dysfunction of the basal ganglia

Jens Volkman, WÜRZBURG, GERMANY

Immunisation strategies for neurodegenerative disease

Bruno Dubois, PARIS, FRANCE

Biomarkers for epilepsy. What is becoming clinically useful?

Annamaria Vezzani, MILAN, ITALY

FOCUSED WORKSHOP 9 DEMENTIA WITH PARKINSONISM

Chairperson:

Elio Scarpini, MILAN, ITALY

Synucleinopathies (PDD-LBD-MSA)

Heinz Reichmann, DRESDEN, GERMANY

Old and new proteinopathies: Tau and TDP-43

Elio Scarpini, MILAN, ITALY

Management of dementia with parkinsonism

Jonathan Rohrer, LONDON, UK

Dementias with parkinsonism have been primarily associated with synuclein pathology, including Lewy body dementia spectrum and multisystem atrophy, and tau pathology, including Frontotemporal Degeneration (FTD) with parkinsonism linked to mutations in Microtubule Associated Protein Tau (MAPT), known as FTDP-17, Progressive Supranuclear Palsy and Corticobasal Degeneration. Nevertheless, recent findings demonstrated that parkinsonism often occur also in FTD patients carrying mutations in progranulin gene (GRN) or in the Chromosome 9 Open Reading Frame (C9ORF)72 gene, both of which are instead associated with the deposition of TAR DNA Binding Protein (TDP)-43 in the brain. Here, these disorders will be discussed, including clinical presentation, genetics, molecular mechanisms involved in their pathogenesis, and management.

SUNDAY, JUNE 21, 2015

11:00-12:30

FOCUSED WORKSHOP 10: UNRESOLVED MANAGEMENT ISSUES IN THE SECONDARY PREVENTION OF ISCHEMIC STROKE

Chairperson:

L. Jaap Kappelle, UTRECHT, THE NETHERLANDS

When and how to start anticoagulation after an acute ischemic stroke due to atrial fibrillation

L. Jaap Kappelle, UTRECHT, THE NETHERLANDS

The management of stroke patients with carotid stenosis and coronary heart disease

Martin Brown, LONDON, UK

What to do in stroke patients with presumed cardiac right to left shunt

Jean-Louis Mas, PARIS, FRANCE

Early and tailor-made treatment aimed at reducing the risk of future cardiovascular complications is of utmost importance for patients who suffered from a transient ischaemic attack or minor ischaemic stroke. Many trials have been conducted during the previous decades that can support the clinician in making the most appropriate choice for this, but we do not have evidence based therapies for every patient. In this workshop the state of the art of secondary prevention will be presented in the context of medical, surgical, endovascular, and cardiac interventions. Both treatment options of proven and of unproven value will be discussed.

SUNDAY, JUNE 21, 2015

11:00-12:30

FOCUSED WORKSHOP 11 EPILEPSY IN GLIOMAS

Chairperson:

Anja Smits, UPPSALA, SWEDEN

Epidemiology and prognostic importance of seizures

Anja Smits, UPPSALA, SWEDEN

The role of surgery to control seizures

Hugues Duffau, MONTPELLIER, FRANCE

The impact of radiation, chemotherapy and AEDs on seizures

Roberta Rudà, TURIN, ITALY

The goal of this focused workshop is to give an update on tumour-related seizures that is of interest to clinicians including practical aspects of treatment, to give an insight into the underlying mechanisms of seizures and brain tumours, and to highlight current research questions.

SUNDAY, JUNE 21, 2015

11:00-12:30

FOCUSED WORKSHOP 12 RNA-RELATED NEUROLOGICAL DISORDERS AND RNA INTERFERENCE IN THERAPY

Chairperson:

Derick G. Wansink, NIJMEGEN, THE NETHERLANDS

**Non-coding and microRNA as anti-epileptogenic
treatment targets**

David Henshall, DUBLIN, IRELAND

ALS

Nicola Ticozzi, MILAN, ITALY

RNA-directed therapy

Derick G. Wansink, NIJMEGEN, THE NETHERLANDS

RNA has taken center stage in the pathology of a subset of neurological disorders. The first objective of this workshop is to provide insight in the pathophysiology of neurological diseases characterized by abnormal expression of transcripts (e.g. miRNAs, repeat RNAs). As expression of these RNAs is strongly related to disease development, they constitute logical targets for intervention. Hence, the second objective is to discuss therapeutic strategies for RNA-related neurological disorders, biotechnological therapeutics needed, and pros and cons associated with these approaches. Innovative ideas on how these strategies can be brought a step closer to the clinic are welcomed.

SUNDAY, JUNE 21, 2015

11:00-12:30

FOCUSED WORKSHOP 13 NEUROSTIMULATION IN PAROXYSMAL NEUROLOGICAL DISORDERS

Chairperson:

Delphine Magis, LIÈGE, BELGIUM

Invasive neurostimulation in migraine and cluster headache

Tim Jürgens, HAMBURG, GERMANY

Neurostimulation in epilepsy

Paul Boon, GHENT, BELGIUM

Non-invasive neuromodulation in headache: new targets and indications

Delphine Magis, LIÈGE, BELGIUM

The aim of this workshop is to provide a complete but practical overview of existing invasive and non-invasive neuromodulation methods used in the management of 2 frequent paroxysmal neurological disorders: headache and epilepsy.

Besides the different types of devices and their availability, the audience will learn the peripheral and central targets of these therapies with their respective rationale, as well as the results of the most recent clinical studies, allowing a direct application in daily clinical practice.

SUNDAY, JUNE 21, 2015

11:00-12:30

FOCUSED WORKSHOP 14 UPDATE ON NEUROCRITICAL CARE OF NEUROMUSCULAR DISORDERS

Chairperson:

Max Damian, CAMBRIDGE, UK

Vasculitic neuropathy and Guillain-Barré Syndrome

Max Damian, CAMBRIDGE, UK

Inflammatory muscle diseases

Olivier Benveniste, PARIS, FRANCE

ICU acquired weakness

Nicola Latronico, BRESCIA, ITALY

Neuromuscular disorders are an important part of specialist neurointensive care practice, and neuromuscular complications are frequently the reason for neurological consults in general intensive care units (ICU). They comprise a wide variety of diverse and sometimes rare disorders, but often carry an excellent prognosis with optimal treatment.

This workshop focuses on some of the main categories of neuromuscular disease seen in the ICU with an emphasis on new developments in treatable disease. The speakers are world experts in their areas and will be based around case vignettes in order to illustrate new pathophysiological understanding, treatment principles and current best practice in a selection of major topics in neuromuscular disorders in Intensive Care. The aim of the workshop is to give an overview of new diagnostic and treatment concepts, and provide guidelines for management, which attendees can use in their daily practice.

SUNDAY, JUNE 21, 2015

11:00-12:30

FOCUSED WORKSHOP 15 NEUROLOGICAL COMPLICATIONS OF IATROGENESIS IN MODERN ERA

Chairperson:

Abhijit Chaudhuri, LONDON, UK

New fungal meningitis after contaminated methylprednisolone

Carol Kauffman, ANN ARBOR, USA

IRIS (Immune Reconstitution Inflammatory Syndrome) complicating therapy in non-HIV infections of central nervous system

Abhijit Chaudhuri, LONDON, UK

Burden of secondary headache from analgesic and triptan overuse

Rigmor Højland Jensen, COPENHAGEN, DENMARK

Increasing prevalence of neurological morbidities from complications of pharmacotherapy pose significant challenges in clinical practice. These complications are often predictable or potentially reversible after treatment withdrawal, but there are also examples of neurological iatrogenesis in modern era that were unpredictable. This focused workshop presents three diverse but important examples of iatrogenic complications, due to contaminated methylprednisolone, immunological reactions of pharmacotherapy and from unregulated use of medicinal products. The key educational objectives are:

- Increased awareness of selected neurological syndromes due to iatrogenesis
- Lessons that have been learnt
- Anticipation and prevention of future risks

SUNDAY, JUNE 21, 2015

11:00-12:30

FOCUSED WORKSHOP 16 TAKING A NEUROLOGICAL SLEEP HISTORY

Chairperson:

Claudio Bassetti, BERN, SWITZERLAND

How to take a sleep history

Claudio Bassetti, BERN, SWITZERLAND

When should we use sleep questionnaires and how?

Dieter Riemann, FREIBURG, GERMANY

What sleep test and when should we ask for it?

Poul Jennum, COPENHAGEN, DENMARK

SUNDAY, JUNE 21, 2015

11:00-12:30

INTERACTIVE SESSION 2 PITFALLS IN NEUROLOGICAL DIAGNOSIS – COMMON MISINTERPRETATIONS

Chairperson:

Hayrettin Tumani, ULM, GERMANY

What is easily misinterpreted in neurological examination

Chris Constantinescu, NOTTINGHAM, UK

What is easily misinterpreted in radiological exams

Massimo Filippi, MILAN, ITALY

What is easily misinterpreted in clinical neurophysiology

Alain Maertens de Noordhout, LIÈGE, BELGIUM

What is easily misinterpreted in blood & CSF tests

Hayrettin Tumani, ULM, GERMANY

SUNDAY, JUNE 21, 2015

11:00-12:30

HANDS-ON COURSE 3 NEUROSONOLOGY

Chairperson:

Manfred Kaps, GIESSEN, GERMANY

Ultrasound findings in acute stroke

László Csiba, DEBRECEN, HUNGARY

Diagnosis of cerebral circulatory arrest with transcranial Doppler ultrasound and clinical consequences

Edoardo Vicenzini, ROME, ITALY

Cerebral microemboli: detecting smoking guns

Werner Mess, MAASTRICHT, THE NETHERLANDS

Interactive case discussion

Manfred Kaps, GIESSEN, GERMANY

This course offers updates and reviews about clinically relevant applications of vascular ultrasound in stroke and circulatory arrest. Examinations during the acute phase of stroke disclose the variability of the occlusion and hemodynamic status immediately after disease onset. Unique selling points of ultrasound such as high temporal and spatial resolution which are clinically relevant for online monitoring and imaging will be presented. Emphasis is focused on practical aspects and there will be ample opportunity for discussion with leading experts in the field.

Sold out!

TOURNAMENT CLINICAL

Chairpersons:

Valeria Caso, PERUGIA, SPAIN

TBA

Nils Erik Gilhus, BERGEN, NORWAY

T2101**14:45****Safety of pregnancy following cerebral venous thrombosis (ISCVT2 - PREGNANCY)**

D. Aguiar de Sousa¹, P. Canhao¹, I. Crassard², J. Coutinho³, A. Arauz⁴, A. Conforto⁵, M. Giroud⁶, J.M.M.C. Ferro¹
¹LISBON, PORTUGAL, ²PARIS, FRANCE, ³AMSTERDAM, NETHERLANDS, ⁴MEXICO CITY, MEXICO, ⁵SÃO PAULO, BRAZIL, ⁶DIJON, FRANCE

T2102**15:00****Connectivity-based parcellation of the thalamus in multiple sclerosis and its implications for cognitive impairment: a multicenter study**

A. Bisecco¹, M.A. Rocca¹, E. Pagani¹, L. Mancini², C. Enzinger³, A. Gallo⁴, H. Vrenken⁵, M.L. Stromillo⁶, M. Copetti⁷, D. Thomas², F. Fazekas³, G. Tedeschi⁴, F. Barkhof⁵, N. De Stefano⁶, M. Filippi¹
¹MILAN, ITALY, ²LONDON, UNITED KINGDOM, ³GRAZ, AUSTRIA, ⁴NAPLES, ITALY, ⁵AMSTERDAM, NETHERLANDS, ⁶SIENNA, ITALY, ⁷SAN GIOVANNI ROTONDO, ITALY

T2103**15:15****Antibodies to MOG in patients with a first episode of longitudinally extensive transverse myelitis: clinical implications**

A. Cobo¹, M. Sepulveda¹, R. Bernard-Valnet², A. Ruiz³, D. Brassat², S. Martínez-Yélamas¹, A. Saiz¹, R. Marignier³
¹BARCELONA, SPAIN, ²TOULOUSE, FRANCE, ³LYONS, FRANCE

T2104**15:30****Sensory attenuation and Parkinson's disease: a new pathophysiological framework of bradykinesia**

A. Macerollo, J.-C. Chen, P. Korlipara, T. Foltynie, J. Rothwell, M. Edwards, J. Kilner
 LONDON, UNITED KINGDOM

T2105**15:45****Corticospinal reserve predicts walking impairment but not fatigability in progressive multiple sclerosis**

A. Nuara, R. Chieffo, F. Esposito, F.G. Martinelli Boneschi, M. Comola, G. Comi, L. Leocani
 MILAN, ITALY

T2106**16:00****Insufficient global health education in European post-graduate training: an EAYNT survey**

A. Sauerbier¹, A. Macerollo², O. Györfi³, P. Balicza³, M. Moarcas⁴, V. Papp⁵, P. Zis⁶, L. Klingelhöfer⁷, T. Saifée¹, W. Struhala⁸, J. Sellner⁹
¹LONDON, UNITED KINGDOM, ²BARI, ITALY, ³BUDAPEST, HUNGARY, ⁴BRASOV, ROMANIA, ⁵HOLSTEBRO, DENMARK, ⁶ATHENS, GREECE, ⁷DRESDEN, GERMANY, ⁸LINZ, AUSTRIA, ⁹SALZBURG, AUSTRIA

SUNDAY, JUNE 21, 2015

14:45-16:15

ORAL SESSION
CEREBROVASCULAR DISEASES 1

Chairpersons:

Michael Brainin, KREMS, AUSTRIA

Matthias Endres, BERLIN, GERMANY

- O2101**
14:45 **Endothelial and neuronal NOX4 is a key mediator of oxidative stress and neurodegeneration after focal cerebral ischemia in mice**
E. Göb¹, H.H. Schmidt², C. Kleinschnitz¹
¹WÜRZBURG, GERMANY, ²MAASTRICHT, THE NETHERLANDS
- O2102**
15:00 **Depressive symptoms in cerebral small vessel disease are associated with white matter microstructural damage: the VMCI-Tuscany study.**
M. Pasi¹, A. Poggiesi¹, E. Salvadori¹, L. Ciolli¹, A. Del Bene¹, S. Marini¹, S. Nannucci¹, F. Pescini¹, R. Valenti¹, A. Ginstroni¹, N. Toschi², S. Diciotti³, M. Mascalchi¹, D. Inzitari¹, L. Pantoni¹
¹FLORENCE, ITALY, ²ROME, ITALY, ³BOLOGNA, ITALY
- O2103**
15:15 **White matter hyperintensities may be related to brain swelling in early cerebral small vessel disease**
R. Peres¹, R. Schmidt², S. Ropele², L. Pirpamer², E. Hofer², F. De Guio¹, E. Duchesnay³, M. Duering⁴, M. Dichgans⁴, H. Chabriat¹, E. Jouvent¹
¹PARIS, FRANCE, ²GRAZ, AUSTRIA, ³SACLAY, FRANCE, ⁴MUNICH, GERMANY
- O2104**
15:30 **Vasoreactive response to hyperemia in CADASIL (Cerebral Autosomal Dominant Arteriopathy with Subcortical Infarcts and Leukoencephalopathy) patients**
E. Pescini¹, I. Donnini¹, V. Rinnoci¹, R. Valenti¹, S. Nannucci¹, E. Adriano², B. Bertaccini¹, A. Carluccio³, R. Mazzei⁴, M. Balestrino², M.T. Dotti³, D. Inzitari¹, L. Pantoni¹
¹FLORENCE, ITALY, ²GENOVA, ITALY, ³SIENNA, ITALY, ⁴COSENZA, ITALY
- O2105**
15:45 **Influence of neurologists' experience on the outcome of patients treated with intravenous thrombolysis for cerebral ischaemia.**
A. Tuffal, D. Leys
LILLE, FRANCE
- O2106**
16:00 **Migraine prevalence in patients with unruptured intracranial aneurysms**
E. Witvoet¹, N. Pelzer¹, G. Terwindt¹, G.J. Rinkel², M. Vlak³, A. Algra², M.J. Wermer¹
¹LEIDEN, THE NETHERLANDS, ²UTRECHT, THE NETHERLANDS, ³AMSTERDAM, THE NETHERLANDS

ORAL SESSION EPILEPSY 1

Chairpersons:

Hannah Cock, LONDON, UNITED KINGDOM

Kristl Vonck, GHENT, BELGIUM

-
- O2107** **The treatment of Rett syndrome with NNZ-2566**
14:45 D. Glaze¹, J. Neul², A. Percy³, T. Feyma⁴, A. Beisang⁴, A. Yaroshinsky⁵, O. Imas⁶, K.G. Jordan⁷, P. Stein⁸, L. Glass⁹, N.E. Jones¹⁰, J. Horrigan¹¹
¹HOUSTON, USA, ²SAN DIEGO, USA, ³BIRMINGHAM, USA, ⁴ST. PAUL, USA, ⁵ROLLING MEADOWS, USA, ⁶MILWAUKEE, USA, ⁷REDLANDS, USA, ⁸ST. LOUIS, USA, ⁹WASHINGTON D.C., USA, ¹⁰BIRMINGHAM, UNITED KINGDOM, ¹¹CHAPEL HILL, USA
- O2108** **Is clonazepam an effective alternative as a first line agent for status epilepticus management?**
15:00 V. Alvarez¹, J.W. Lee², F.W. Drislane², M.B. Westover², J. Novy³, B.A. Dworetzky², A.O. Rossetti³
¹SION, SWITZERLAND, ²BOSTON, USA, ³LAUSANNE, SWITZERLAND
- O2109** **The role of toll-like receptor 3 in epilepsy**
15:15 F. Benninger¹, A. Gross², I. Steiner¹, D. Offen¹, E. Okun²
¹PETACH TIKVA, ISRAEL, ²RAMAT GAN, ISRAEL
- O2110** **Eslicarbapazine acetate as add-on treatment to antiepileptic monotherapy in adults with partial-onset seizures: real-world data from the EPOS study**
15:30 M. Holtkamp¹, R. McMurray², R. Sousa³, E. Kockelmann⁴
¹BERLIN, GERMANY, ²HATFIELD, UNITED KINGDOM, ³S. MAMEDE DO CORONADO, PORTUGAL, ⁴FRANKFURT AM MAIN, GERMANY
- O2111** **Register for collecting and measuring outcomes of licensed anti-epileptic drugs in patients with epilepsy and intellectual disability and/or pervasive developmental disorders**
15:45 R. Shankar¹, Z. Doran², B.N. McLean³, M.C. Walker⁴, L.J. Sander⁴, D. Cox¹, R. Hillier⁵, M.J. Sadler², M. Mohan⁶, M. Parrett¹, C. Jory¹, M. Kerr⁷, J. Devapriam⁸, J. Craig⁹, R. Laugharne¹⁰
¹TRURO, UNITED KINGDOM, ²PLYMOUTH, ³TRURO, ⁴LONDON, ⁵UNITED KINGDOM, ⁶BRISTOL, UNITED KINGDOM, ⁷CARDIFF, UNITED KINGDOM, ⁸LEICESTERSHIRE, UNITED KINGDOM, ⁹BELFAST, ¹⁰LISKEARD, UNITED KINGDOM

SUNDAY, JUNE 21, 2015

14:45-16:15

Oral Session: Epilepsy 1
(condT.)

Chairpersons:

Hannah Cock, LONDON, UNITED KINGDOM

Kristl Vonck, GHENT, BELGIUM

O2112
16:00

.....

Efficacy of adjunctive perampanel in idiopathic generalised epilepsy patients with drug-resistant primary generalised tonic-clonic seizures by age, sex, race: a double-blind PBO-controlled Phase 3 trial

B.J. Steinhoff¹, T.J. O'Brien², H. Yang³, A. Laurenza³, A. Patten⁴, F. Bibbiani³

¹KEHL-KORK, GERMANY, ²MELBOURNE, AUSTRALIA,

³WOODCLIFF LAKE, NJ, USA, ⁴HATFIELD, HERTFORDSHIRE, UNITED KINGDOM

ORAL SESSION MOVEMENT DISORDERS 3

Chairpersons:

Marie Vidailhet, PARIS, FRANCE

Heinz Reichmann, DRESDEN, GERMANY

- O2113** **White matter microstructural damage and cognitive impairment in Parkinson's disease**
14:45 *S. Galantucci*¹, F. Agosta¹, D. Gagliardi¹, I. Stanković², I. Petrović², F. Caso¹, T. Stojković², V.S. Kostić², M. Filippi¹
¹MILAN, ITALY, ²BELGRADE, SERBIA
- O2114** **Pharmacokinetic profile of ND0612 (levodopa/carbidopa for subcutaneous infusion) in Parkinson's disease (PD) patients with motor fluctuations: results of a Phase IIa dose finding study**
15:00 *N. Giladi*¹, Y. Caraco², T. Gurevich¹, R. Djaldetti¹, Y. Cohen³, O. Yacobi-Zeevi³, S. Oren³, K. Kieburz⁴, C.W. Olanow⁵
¹TEL AVIV, ISRAEL, ²JERUSALEM, ISRAEL, ³REHOVOT, ISRAEL, ⁴ROCHESTER, USA, ⁵NEW YORK, USA
- O2115** **Apathy in Parkinson's disease is associated with reward sensitivity deficits**
15:15 K. Muhammed, S. Manohar, G. Tofaris, M. Bogdanovic, G. Lennox, M. Hu, *M. Husain*
 OXFORD, UNITED KINGDOM
- O2116** **Nigral iron susceptibility in Parkinson's disease**
15:30 *A. Martin Bastida*¹, M. Politis², C. Loane², N. Lao-Kaim², N. Valle-Guzman³, Z. Kefalopoulou², G. Paul⁴, H. Widner⁴, T. Foltynie², R. Barker³, P. Piccini²
¹LONDON, ²LONDON, UNITED KINGDOM, ³CAMBRIDGE, UNITED KINGDOM, ⁴LUND, SWEDEN
- O2117** **Idiopathic RBD patients express the Parkinson's disease related brain pattern**
15:45 *S. Meles*¹, D. Vadasz², K. Eggert², E. Sittig-Wiegand², R. Renken¹, C. Depboylu², V. Ries², G. Mayer², K. Reetz³, S. Overeem⁴, A. Pijpers⁴, K. Leenders¹, W.H. Oertel²
¹GRONINGEN, NETHERLANDS, ²MARBURG, GERMANY, ³AACHEN, GERMANY, ⁴HEEZE, NETHERLANDS
- O2118** **Multimodal MRI markers discriminate Parkinson's disease from multiple system atrophy patients.**
16:00 *P. Péran*¹, M. Sierra², A. Pavy-Le Traon¹, O. Rascol¹
¹TOULOUSE, FRANCE, ²SANTANDER, SPAIN

SUNDAY, JUNE 21, 2015

14:45-16:15

ORAL SESSION
NEURO-ONCOLOGY

Chairpersons:

Wolfgang Grisold, VIENNA, AUSTRIA

Riccardo Soffietti, TORINO, ITALY

O2119 Recursive partitioning analysis of WHO grade II, III and IV gliomas using 3121 samples

14:45

A. Alentorn, V. Gleize, M. Gleize, Y. Marie, J.-Y. Delattre, A. Idbaih, K. Hoang-Xuan, M. Sanson
PARIS, FRANCE**O2120** Detection, characterization and inhibition of FGFR-TACC fusions in IDH wild type glioma

15:00

A.L. Di Stefano¹, A. Fucci², V. Frattini², M. Labussiere¹, K. Mokhtari¹, P. Zoppoli², Y. Marie¹, A. Bruno¹, J. Savatovsky¹, M. Touat¹, H. Belaid¹, A. Idbaih¹, C. Houillier¹, F.R. Luo³, J.-C. Soria¹, J. Tabernero⁴, M. Eoli⁵, R. Paterra⁵, S. Yip⁶, K. Petrecca⁷, J.A. Chan⁸, G. Finocchiaro⁵, A. Lasorella², M. Sanson¹, A. Iavarone²
¹PARIS, FRANCE, ²NEW YORK, USA, ³TITUSVILLE, USA, ⁴BARCELONA, SPAIN, ⁵MILAN, ITALY, ⁶VANCOUVER, CANADA, ⁷MONTREAL, CANADA, ⁸CALGARY, CANADA**O2121** Second-line chemotherapy with bevacizumab and fotemustine in temozolomide-pretreated patients with recurrent grade III gliomas: a phase II study

15:15

F. Franchino, M. Magistrello, A. Pellerino, E. Trevisan, R. Rudà, R. Soffietti
TURIN, ITALY**O2122** IL10 and IL10:IL6 ratio in CSF is useful for diagnosis but also in the assessment of therapeutic response in patients with Primary Central Nervous System Lymphoma (PCNSL)

15:30

L. Nguyen Them¹, M. Costopoulos¹, M.-L. Tanguy¹, C. Houillier¹, S. Choquet¹, K. Hoang-Xuan¹, M. Le Garff Tavernier¹, C. Soussain²
¹PARIS, FRANCE, ²SAINT CLOUD, FRANCE**O2123** Efficacy and tolerability of lacosamide in patients with glioma: a prospective study

15:45

A. Pellerino, M. Magistrello, F. Franchino, E. Nicolotto, R. Soffietti, R. Rudà
TURIN, ITALY**O2124** Incidence of radiation-induced leukoencephalopathy after radiation therapy in long-term survivors of WHO grade III and IV gliomas and risk factors

16:00

R. Terziev, Y. Marie, D. Psimaras, A. Duran Pena, A. Idbaih, K. Hoang-Xuan, M. Sanson, D. Ricard
PARIS, FRANCE

ORAL SESSION EPILEPSY 2

Chairpersons:

Paul A.J.M. Boon, GHENT, BELGIUM

Reetta Kälviainen, KUOPIO, FINLAND

O2201 Early misdiagnosis of the etiology of status epilepticus
16:45 (SE)

F. Drislane¹, V. Alvarez², J.W. Lee¹, B.A. Dworetzky¹,
M.B. Westover¹, D. Curley¹, A.O. Rossetti³

¹BOSTON, USA, ²SION, SWITZERLAND, ³LAUSANNE, SWITZERLAND

O2202 Bilateral anterior nuclei of the thalamus stimulation
17:00 for the treatment of epilepsy. Two cases of subcortical band heterotopia

A. Franco, S. Pinelo, R. Peralta, J.G.D.B.C. Pimentel,
C. Bentes

LISBON, PORTUGAL

O2203 Myocyte-specific enhancer binding factor 2A
17:15 expression is downregulated during temporal lobe epilepsy

Y. Jinxian, H. Yunyi, C. Yangmei, H. Hao

CHONGQING, CHINA

O2204 Expression of miR146-a, an inflammation-associated
17:30 microRNA, in Mesial Temporal Lobe Epilepsy

B. Leal, C. Carvalho, J.M.M. Chaves, A. Bettencourt,
J. Freitas, J.M.C.F. Lopes, J.E.D.P. Ramalheira, P.P Costa,
A. Martins da Silva, B. Martins da Silva

PORTO, PORTUGAL

O2205 Retrospective evaluation of Salzburg Consensus
17:45 criteria for diagnosis of non-convulsive status epilepticus

M. Leitinger¹, G. Kuchukhidze¹, J. Höfler¹, J. Dobsberger¹,
A. Rohracher¹, G. Kalss¹, I. Deak¹, M. Preisel¹, E. Trinka¹,
S. Beniczky²

¹SALZBURG, AUSTRIA, ²DIANALUND, DENMARK

SUNDAY, JUNE 21, 2015

16:45-18:15

ORAL SESSION
HEADACHE AND PAIN

Chairpersons:

Rigmor Jensen, COPENHAGEN, DENMARK

Elena Lebedeva, YEKATERINBURG, RUSSIAN FEDERATION

O2206 Brief intervention for medication-overuse headache
16:45 in primary care (the BIMOH study): an open long-term follow-up

E.S. Kristoffersen¹, J. Straand², M.B. Russell¹,
C. Lundqvist¹

¹LØRENSKOG, NORWAY, ²OSLO, NORWAY

O2207 Quality of diagnosis and management of headache in
17:00 the general population

E. Lebedeva¹, N. Kobzeva¹, D. Gilev¹, J. Olesen²

¹YEKATERINBURG, RUSSIAN FEDERATION, ²COPENHAGEN,
DENMARK

O2208 Structural cortical brain abnormalities in patients
17:15 with vestibular migraine

R. Messing, M.A. Rocca, B. Colombo, R. Teggi, A. Falini,
G. Comi, M. Filippi

MILAN, ITALY

O2209 Nigrostriatal dopaminergic system involvement in the
17:30 primary burning mouth syndrome: a transcranial sonography study

M. Mijajlovic, J. Zidverc-Trajkovic, N. Sternic

BELGRADE, SERBIA

O2210 Refractory chronic cluster headache: A consensus
17:45 statement on clinical definition from the European Headache Federation

D. Mitsikostas¹, L. Edvinsson², R. Jensen³, Z. Katsarava⁴,
C. Lampl⁵, A. Negro⁶, V. Osipova⁷, K. Paemeleire⁸, A. Siva⁹,
D. Valade¹⁰, P. Martelletti⁶

¹ATHENS, GREECE, ²LUND, SWEDEN, ³COPENHAGEN, DENMARK,

⁴ESSEN, GERMANY, ⁵LINZ, AUSTRIA, ⁶ROME, ITALY, ⁷MOSCOW,

RUSSIAN FEDERATION, ⁸GHENT, BELGIUM, ⁹ISTANBUL, TURKEY,

¹⁰PARIS, FRANCE

O2211 Abstract cancelled

ORAL SESSION MOTOR NEURONE DISEASES

Chairpersons:

Reinhard Dengler, HANNOVER, GERMANY

Vincenzo Silani, MILAN, ITALY

O2212 HFE p.His63Asp polymorphism is not a modifier of ALS

16:45 phenotype

A. Chiò¹, M. Barberis¹, M. Brunetti¹, G. Restagno¹, M. Sabatelli², M. Zollino², F. Giannini³, F. Conforti⁴, C. Caponnetto⁵, P. Mandich⁵, J. Mandrioli⁶, S. Penco⁷, C. Lunetta⁷, G. Borghero⁸, M.R. Murru⁸, M.R. Monsurrò⁹, P. Volanti¹⁰, I. Simone¹¹, G. Logroscino¹¹, F. Logullo¹², F. Salvi¹³, N. Riva⁷, B. Traynor¹⁴, G. Mora⁷, A. Calvo¹
¹TURIN, ²ROME, ³SIENA, ⁴MANGONE, ⁵GENOA, ⁶MODENA, ⁷MILAN, ⁸CAGLIARI, ⁹NAPLES, ¹⁰MISTRETTA, ¹¹BARI, ¹²ANCONA, ¹³BOLOGNA, ITALY, ¹⁴BETHESDA, USA

O2213 Structural MRI reveals distributed cortical thinning in patients with pure lower motor neuron disease variants

17:00

P.M. Ferraro¹, F. Agosta¹, E.G. Spinelli¹, N. Riva¹, P. Valsasina¹, M. Copetti², A. Chiò³, S. Iannaccone¹, V. Silani¹, A. Falini¹, G. Comi¹, M. Filippi¹
¹MILAN, ²SAN GIOVANNI ROTONDO, ³TURIN, ITALY

O2214 Amyotrophic Lateral Sclerosis in the Caribbean Island of Guadeloupe: a new focus of ALS associated with parkinsonism

17:15

S. Mécharles, C. Alecu, A. Lannuzel
POINTE-À-PITRE, FRANCE

O2215 Development of a human cell model of amyotrophic lateral sclerosis using induced pluripotent stem cells

17:30

M. Naumann, X. Lojewski, A. Storch, A. Hermann
DRESDEN, GERMANY

O2216 The frontotemporal syndrome of amyotrophic lateral sclerosis is associated with poor survival and reduced efficacy of noninvasive ventilation

17:45

J. Raaphorst¹, R. Govaarts², E. Beeldman², M.-J. van Tol³, A. van der Kooij², L.H. van den Berg⁴, M. Kampelmacher⁴, P. Wijkstra³, M. Zijnen-Suyker⁵, N. Cobben⁶, B. Schmand², R. de Haan², M. de Visser²
¹NIJMEGEN, ²AMSTERDAM, ³GRONINGEN, ⁴UTRECHT, ⁵ROTTERDAM, ⁶MAASTRICHT, THE NETHERLANDS

O2217 Altered cerebral functional connectivity in pre-symptomatic individuals at risk of ALS

18:00

R. Menke¹, M. Proudfoot¹, J. Wu², P. Andersen³, K. Talbot¹, M. Benatar², M. Turner¹
¹OXFORD, UNITED KINGDOM, ²MIAMI, USA, ³UMEA, SWEDEN

SUNDAY, JUNE 21, 2015

16:45-18:15

ORAL SESSION
MS AND RELATED DISORDERS 3

Chairpersons:

Giancarlo Comi, MILAN, ITALY

Aksel Siva, ISTANBUL, TURKEY

O2218 Progressive multiple sclerosis: correlations between
16:45 diffuse white matter inflammation, active plaque formation and low age indicate peripheral immune involvement in a subset of patients

S. Bramow¹, J.M. Frischer², H. Lassmann², H. Broholm¹, C.F. Lucchinetti³, P.S. Sørensen¹, H. Laursen¹
¹COPENHAGEN, DENMARK, ²VIENNA, AUSTRIA, ³ROCHESTER, MINNESOTA, USA

O2219 Efficacy of rituximab in refractory neuromyelitis
17:00 optica

N. Collongues¹, D. Brassat², E. Maillart³, P. Labauge⁴, J.-C. Ouallet⁵, C. Carra Dalliere⁶, T. Moreau⁷, B. Bourre⁸, A.-C. Papeix³, B. Audouin⁹, B. Brochet⁵, S. Vukusic¹⁰, J. de Seze¹¹, R. Marignier¹²
¹STRASBOURG, ²TOULOUSE, ³PARIS, ⁴MONTPELLIER, ⁵BORDEAUX, ⁶MONTPELLIER, ⁷DIJON, ⁸ROUEN, ⁹MARSEILLES, ¹⁰LYONS, ¹¹STRASBOURG, ¹²LYONS, FRANCE

O2220 Microstructural thalamic and cortico-thalamic
17:15 correlates of cognitive impairment in pediatric multiple sclerosis

E. De Meo¹, M.A. Rocca¹, L. Moiola¹, A. Ghezzi², P. Veggiotti³, R. Capra⁴, M.P. Amato⁵, A. Fiorino¹, L. Pippolo², M.C. Pera³, G. Comi¹, A. Falini¹, M. Filippi¹
¹MILAN, ²GALLARATE, ³PAVIA, ⁴BRESCIA, ⁵FLORENCE, ITALY

O2221 Cerebrospinal fluid lipocalin-2 levels are reduced in
17:30 multiple sclerosis and correlate with putaminal iron accumulation

M. Khalil, A. Renner, C. Langkammer, C. Enzinger, S. Ropele, T. Stojakovic, H. Scharnagl, J.J. Archelos-Garcia, S. Fuchs, T. Seifert-Held, F. Fazekas
GRAZ, AUSTRIA

Oral Session: MS and related disorders 3
(CONDT.)

Chairpersons:

Giancarlo Comi, MILAN, ITALY

Aksel Siva, ISTANBUL, TURKEY

02222 **Cognitive impairment predicts disability and progression in newly-diagnosed relapsing-remitting multiple sclerosis**
17:45

M. Moccia¹, R. Lanzillo¹, R. Palladino¹, T. Costabile¹,
C.V. Russo¹, A. de Rosa¹, A. Carotenuto¹, G.T. Maniscalco¹,
V. Brescia Morra¹, K.C.-M. Chang²

¹NAPLES, ITALY, ²LONDON, UNITED KINGDOM

02223 **Epstein-Barr virus antibodies in serum and DNA load in saliva do not correlate with clinical or radiological disease activity in patients with early multiple sclerosis**
18:00

R. Giess¹, C. Pfuhl¹, J. Behrens¹, L. Rasche¹, J. Würfel¹,
A. Brandt¹, F. Pache¹, E. Freitag¹, N. Khalighy¹, C. Otto²,
J. Hofmann³, B. Eberspächer³, J. Bellmann-Strobl¹,
F. Paul¹, K. Ruprecht¹

¹BERLIN, ²POTSDAM, ³BERLN, GERMANY

SUNDAY, JUNE 21, 2015

16:45-18:15

ORAL SESSION
PERIPHERAL NERVE DISORDERS 2

Chairpersons:

Eduardo Nobile-Orazio, MILAN, ITALY

Guido Stoll, WUERZBURG, GERMANY

- 02224** Transition from asymptomatic to symptomatic
16:45 TTR-FAP: a descriptive analysis of 94 subjects from the THAOS registry
T. Coelho¹, D. Keohane², M. Sultan², S. Short³, M.-L. Ong²
¹PORTO, PORTUGAL, ²NEW YORK, ³SAN FRANCISCO, USA
- 02225** Diagnostic utility of somatosensory evoked potentials in chronic polyradiculopathy without ENMG signs of demyelination
17:00 P. Devic, P. Petiot, F. Mauguière
LYONS, FRANCE
- 02226** The natural history of HSJ1-RELATED hereditary neuropathies: a case series of 9 patients with long-term follow-up
17:15 M. Frasquet Carrera¹, J.J. Vilchez¹, C. Marquez Infante², M.J. Chumillas¹, R. Sivera³, J. Vázquez-Costa¹, F. Palau¹, C. Espinos¹, T. Sevilla¹
¹VALENCIA, ²SEVILLE, ³GANDIA, SPAIN
- 02227** Prognostic factors affecting long-term disability in multifocal motor neuropathy (MMN)
17:30 G. Galassi¹, A. Ariatti¹, F. Girolami², M. Tondelli¹, F. Benuzzi¹, F. Valzania¹, R. D'amico¹, S. Balduzzi¹, P. Nichelli¹
¹MODENA, ITALY, ²MANTUA, ITALY
- 02228** The ultrasound pattern score – UPS: a new method to differentiate acute and subacute neuropathies using ultrasound of the peripheral nerves
17:45 A. Grimm¹, B. Décard¹, H. Axer²
¹BASEL, SWITZERLAND, ²JENA, GERMANY
- 02229** Corneal confocal microscopy detects small-fibre damage, particularly in patients with sensory and autonomic ISFN
18:00 S. Javed¹, G. Ponirakis², M. Ferdousi¹, S. Azmi¹, I. Petropoulos², M. Tavakoli¹, M. Jeziorska¹, D. Gosal³, R.A. Malik²
¹MANCHESTER, UNITED KINGDOM, ²DOHA, QATAR, ³SALFORD, UNITED KINGDOM

TEACHING COURSE 7 NOVEL INSIGHTS IN STROKE AETIOLOGIES – LEVEL 3

Chairperson:

Franz Fazekas, GRAZ, AUSTRIA

Extra and intracranial arterial dissection

Stephanie Debette, PARIS, FRANCE

Vasculitis

Ruth Geraldes, LISBON, PORTUGAL

Cryptogenic stroke

Cristina Tiu, BUCHAREST, ROMANIA

Amyloid angiopathy

Franz Fazekas, GRAZ, AUSTRIA

The past years have seen a rapid progress in understanding, diagnosing and managing more rare but nonetheless critical causes and conditions of stroke. Thus for long cervical artery dissection appears to have been an underestimated cause of stroke especially in the young and we have first data from a randomized trial comparing different therapeutic strategies once this diagnosis has been established. Vasculitis remains a vexing problem and we have to take every effort not to miss out on this diagnosis but also not to overdiagnose it. There is an increasing number of tools available to reduce the number of cryptogenic stroke and the decision what to use when and for whom is not always easy. Finally cerebral amyloid angiopathy is much more prevalent than previously thought and may present quite variably. All that in focus this teaching course will provide insights that deepen our pathophysiologic understanding, show directions of future research and add to our competence in stroke management.

SUNDAY, JUNE 21, 2015

14:45-18:15

TEACHING COURSE 8 MULTIPLE SCLEROSIS – LEVEL 2-3

Chairperson:

Ralf Gold, BOCHUM, GERMANY

Neurophysiological assessment of MS

Letizia Leocani, MILAN, ITALY

Imaging in MS - typical features

Frederik Barkhof, AMSTERDAM, THE NETHERLANDS

CSF biomarkers in MS

Manuel Comabella, BARCELONA, SPAIN

MS and clinical differential diagnosis

Ralf Gold, BOCHUM, GERMANY

Epidemiological data speak for a marked increase in the incidence of multiple sclerosis (MS). Based on the recent update of the McDonald criteria, diagnosis of MS can already be made after the first relapse when magnetic resonance imaging gives evidence for dissemination in time. Yet at the same time, the challenges for diagnosis have increased: there must be clear evidence that no other inflammatory or metabolic disease of the central nerves system mimics MS. In this course, we will systematically discuss para-clinical methods, which can further differentiate MS from other diseases. Examinations of cerebrospinal fluid, magnetic resonance imaging, but also electrophysiological methods are the mainstay for further corroborating the diagnosis of MS. Finally, clinical vignettes will be presented.

SUNDAY, JUNE 21, 2015

14:45-18:15

TEACHING COURSE 9 HOW TO DIAGNOSE AND MANAGE MITOCHONDRIAL DISORDERS – LEVEL 2

Chairperson:

Thomas Klopstock, MUNICH, GERMANY

Genetics and pathomechanisms

Doug Turnbull, NEWCASTLE, UK

The mitochondrial disorders not to miss: which are the red flags?

Michelangelo Mancuso, PISA, ITALY

Age-associated mitochondrial dysfunction in neurodegeneration and ageing

Laurence Bindoff, BERGEN, NORWAY

Management of mitochondrial disorders

Thomas Klopstock, MUNICH, GERMANY

Mitochondrial disorders are a particularly complex and heterogeneous group of disorders. Mutations in mitochondrial DNA or in nuclear mitochondrial genes lead to a plethora of multisystemic disorders that may literally manifest with any symptom, in any organ, and at any age. Apart from these classical inherited mitochondrial diseases, age-associated neurodegeneration as in Parkinson's and Alzheimer's disease as well as aging itself have been associated with mitochondrial dysfunction. This course will procure basic knowledge and new developments in mitochondrial medicine, from childhood disorders to aging, from pathomechanisms to therapy.

SUNDAY, JUNE 21, 2015

14:45-18:15

TEACHING COURSE 10 ADEM, MS, NMO & CO IN CHILDREN, ADOLESCENTS AND YOUNG ADULTS – DOES AGE MATTER? – LEVEL 1

Chairperson:

Daniela Pohl, OTTAWA, CANADA

MS and NMO in childhood and later in life – why age matters

Daniela Pohl, OTTAWA, CANADA

MS mimics in young patients

Marc Tardieu, PARIS, FRANCE

ADEM – how to diagnose and treat

Rogier Hintzen, ROTTERDAM, THE NETHERLANDS

Cognition in paediatric versus adult onset MS

Maria Pia Amato, FLORENCE, ITALY

Immune-mediated white matter disorders occurring in the youngest age group comprise a heterogeneous group of diseases including acute disseminated encephalomyelitis (ADEM), multiple sclerosis (MS) and the spectrum of neuromyelitis optica disorders (NMO-SD). Newly described entities like myelin-oligodendrocyte-glycoprotein (MOG) antibody mediated disorders have further increased diagnostic and therapeutic challenges.

Through case presentations and lectures, faculty will discuss those diverse childhood white matter diseases with emphasis on recently characterized syndromes and findings. Furthermore, the teaching course will provide an overview of MS-mimics, clues for diagnosis and treatment of ADEM and the most recent advances in the field of paediatric MS and cognition.

TEACHING COURSE 11 IMAGING IN CLINICAL DECISION MAKING – LEVEL 1

Chairperson:

Massimo Filippi, MILAN, ITALY

Intellectual dysfunctions

Massimo Filippi, MILAN, ITALY,

Headache and pain

Jes Olesen, COPENHAGEN, DENMARK

Gait and locomotor disturbances

Nir Giladi, TEL AVIV, ITALY

Tremor, tics and dystonia

Davide Martino, LONDON, UK

Neurological manifestations require rapid clinical, para-clinical and laboratory evaluation. In the last decade, imaging has assumed great importance in the assessment of these patients. However, the optimal approach to utilization of imaging for thorough and efficient care remains poorly defined for many neurologic presentations. Many courses provide an invaluable overview of the many important details of the pathology of neurologic disease. But patients present to the clinic with symptoms, which typically guide the clinician through a decision making process. This teaching course will therefore prioritize a symptom-based approach to imaging in neurologic diseases, based on the practice parameters developed by expert clinicians and imagers in the field. The approaches described in each lecture should provide a framework that can be utilized by the attendees to refine their approach, suggest alternative pathways, or encourage discussion that can result in more optimal clinical care.

SUNDAY, JUNE 21, 2015

14:45-18:15

TEACHING COURSE 12: HOW TO DEAL WITH DIFFICULT COMMUNICATION ISSUES IN PALLIATIVE NEUROLOGY – LEVEL 2

Chairperson:

David Oliver, ROCHESTER, UK

How do we discuss the diagnosis?

Gian Domenico Borasio, LAUSANNE, SWITZERLAND

**How do we discuss interventions in advanced
neurological illness?**

Marianne de Visser, AMSTERDAM, THE NETHERLANDS

How do we discuss the end of life issues?

David Oliver, ROCHESTER, UK

How to manage a wish for hastened death?

Raymond Voltz, COLOGNE, GERMANY

Communication with patients in neurology is very often not easy. In this teaching course, we want to address difficult communication which is not due to neurological impairment but due to difficult contents. Frequently, we are not trained in breaking bad news, discussing end-of-life decisions and interventions or how to react if a patient asks for assisted dying. This course wants to address these issues in an interactive way with experienced colleagues from the field of neurology and palliative care.

SUNDAY, JUNE 21, 2015

15:00-17:30

SCIENTIFIC SATELLITE SYMPOSIUM AT CHARITÉ

EFNA-EAN PUBLIC AWARENESS DAY:
UNDERSTANDING HEADACHE AND SLEEP DISORDERS

Location: Neurology Lecture Hall ("Hörsaal") in the "Alte Nervenklinik" at Charite Campus Mitte

15:00 Meet'n'greet**15:30** Welcome by Professor Wolfgang OertelGünther Deuschl, PRESIDENT,
EUROPEAN ACADEMY OF NEUROLOGY
Audrey Craven, PRESIDENT,
EUROPEAN FEDERATION OF NEUROLOGICAL ASSOCIATIONS**15:45** Diagnosing, Treating and Managing Headache and Sleep DisordersUwe Reuter, BERLIN, GERMANY
Claudia Trenkwalder, KASSEL, GERMANY

Followed by Questions and Answers

16:30 COFFEE BREAK**17:00** Patient Panel: Living with Headache and Sleep Disorders

Chaired by David Vodušek (chair EAN Liaison committee, SLOVENIA)

Including Questions and Answers

Patient Participants: Jakob Terhaag, cluster headache patient and Hartmut Stoye, Restless Legs Patient

17:35 The Future for Patients with Headache and Sleep Disorders

Wolfgang Oertel (coordinator of EAN sub-committee on European Affairs)

Followed by Questions and Answers

18:00 Closing words



**ECNR European Congress
of NeuroRehabilitation 2015**

Vienna

December 1-4, 2015

Hofburg Congress Center

Vienna, Austria



Abstract Submission Deadline:
Tuesday, June 30, 2015 (12:00 CET)

www.ecnr.org

MONDAY, JUNE 22, 2015

SESSIONS



www.efic.org



9th Congress of the
**EUROPEAN
PAIN FEDERATION**
EFIC®



PAIN IN EUROPE IX

VIENNA, AUSTRIA, 2-5 SEPTEMBER 2015
**TRANSLATING EVIDENCE
INTO PRACTICE**

REGISTER NOW AND SAVE
EARLY RATE DEADLINE: 6 MAY, 2015

Scan this code with
your smart phone



www.kenes.com/efic
Need a code reader for your phone?
<http://get.neoreader.com>

MONDAY, JUNE 22, 2015

07:00-08:30

HANDS-ON COURSE 4 NEUROPHYSIOLOGY III – ADVANCED

Chairperson:

Joseph Classen, LEIPZIG, GERMANY

Transcranial magnetic stimulation (TMS) – diagnostic applications

Joseph Classen, LEIPZIG, GERMANY

Therapeutic applications of neurophysiology. Non-invasive brain stimulation with repetitive TMS and transcranial direct current stimulation

Letizia Leocani, MILAN, ITALY

Sponsor?

Sold out!

MONDAY, JUNE 22, 2015

08:30-10:30

SYMPOSIUM 4: PRECLINICAL ALZHEIMER'S DISEASE

Chairpersons:

Philip Scheltens, AMSTERDAM, THE NETHERLANDS

Reinhold Schmidt, GRAZ, AUSTRIA

Terminology and current criteria

Reinhold Schmidt, GRAZ, AUSTRIA

**Validation status of "established" biomarkers for
preclinical diagnosis**

Philip Scheltens, AMSTERDAM, THE NETHERLANDS

New biomarkers

Markus Otto, GERMANY

Treatment in the pipeline

Christoph Hock, SCHLIEREN, SWITZERLAND

MONDAY, JUNE 22, 2015

08:30-10:30

SYMPOSIUM 5: EXPANDING FIELDS IN NEUROLOGY

Chairpersons:

Michael Brainin, KREMS, AUSTRIA

David Vadušek, LJUBLJANA, SLOVENIA

Neurogeriatrics

Walter Maetzler, TÜBINGEN, GERMANY

Neurorehabilitation

Stéphanie Clarke, LAUSANNE, SWITZERLAND

Neuro intensive care unit: post-resuscitation

Maxwell Damian, CAMBRIDGE, UK

Neurology at the emergency room: stroke mimics

Atte Meretoja, HUS, FINLAND

MONDAY, JUNE 22, 2015

08:30-10:30

SYMPOSIUM 6: PRESENT AND FUTURE TREATMENT IN MOVEMENT DISORDERS

Chairpersons:

Olivier Rascol, TOULOUSE, FRANCE

Kailash Bhatia, LONDON, UK

New therapies in Parkinson's disease

Olivier Rascol, TOULOUSE, FRANCE

New therapeutic strategies in Huntington's disease

Sarah Tabrizi, LONDON, UK

**Current and future possibilities in the management of
dystonia**

Alberto Albanese, MILAN, ITALY

New treatments for ataxias

Thomas Klockgether, BONN, GERMANY

MONDAY, JUNE 22, 2015

11:00-12:30

FOCUSED WORKSHOP 17: NON-CODING RNA IN MULTIPLE SCLEROSIS – FROM PATHOGENESIS TO THERAPY

Chairperson:

Marcin Mycko, LODZ, POLAND

miRNA profiling for biomarker discovery in multiple sclerosis

Michael Racke, COLUMBUS, USA

MicroRNA in brain and CSF in MS

Edgar Meinl, MUNICH, GERMANY

Non-coding RNA regulation of autoimmune mechanisms of MS

Marcin Mycko, LODZ, POLAND

Known protein-coding genes compose less than 3% of the human genome. In contrast, a universe of non-coding RNAs, a heterogeneous population comprising long, short (100–300 nucleotides) and small (20–30 nucleotides) transcripts emerged as a major product of the genome. MicroRNAs (miRNA), a small non-coding RNA, post-transcriptionally regulate gene expression. Approximately over 60% of protein-coding gene expression is regulated by miRNAs and methods of miRNA manipulation emerge as potential therapeutic venues. These areas of research create an exciting field addressing the role of non-coding RNA in multiple sclerosis (MS) and identify an intriguing target for potential pharmacological intervention.

MONDAY, JUNE 22, 2015

11:00-12:30

FOCUSED WORKSHOP 18 NOVEL APPROACHES FOR THE REHABILITATION OF MOVEMENT DISORDERS AFTER STROKE

Chairperson:

Volker Dietz, ZÜRICH, SWITZERLAND

Rehabilitation of hand function after stroke

Nick Ward, LONDON, UK

Rehabilitation of locomotor function after stroke

Volker Dietz, ZÜRICH, SWITZERLAND

Technological support for the rehabilitation after stroke

Rüdiger Rupp, HEIDELBERG, GERMANY

In this focused workshop the participants will learn

1. To discuss the physiological basis of rehabilitation of hand and locomotor function after stroke
2. To understand the role of neuroplasticity in supporting recovery of function
3. To understand the rationale behind novel neurorehabilitation approaches including drugs and non-invasive brain stimulation
4. To appreciate the range of novel technologies to support functional training
5. To consider limitations in the recovery of function after stroke
6. To explore the role of early prediction of outcome after stroke in stratification of appropriate training approaches

MONDAY, JUNE 22, 2015

11:00-12:30

FOCUSED WORKSHOP 19 NON-PHARMACOLOGICAL ISSUES IN DEMENTIA

Chairperson:

Dorota Religa, STOCKHOLM, SWEDEN

Minimal requirements for driving. Regulations across European countries

Dorota Religa, STOCKHOLM, SWEDEN

Driving errors, accidents and their predictors in patients with cognitive disorders

Sokratis Papageorgiou, ATHENS, GREECE

What is the evidence for effect of cognitive stimulation in dementia?

Ana Catarina Santos, LISBON, PORTUGAL

1. Assess and interpret common cognitive and behavioural problems seen in patients affected by dementia and other neurological disorders with cognitive deficits
2. Support neurologists in the utilization of available tests for evaluation of fitness to drive in dementia
3. Present the risks, benefits and appropriate tests that are currently on the markets for cognitive stimulation and rehabilitation

MONDAY, JUNE 22, 2015

11:00-12:30

FOCUSED WORKSHOP 20 INFECTIONS OF THE NERVOUS SYSTEM: THE IMPACT OF A CHANGING ENVIRONMENT AND SOCIETY ON EPIDEMIOLOGY, COURSE OF DISEASE AND CHANGE IN PATHOGENESIS

Chairperson:

Pille Taba, TARTU, ESTONIA

The impact of climate change

Pille Taba, TARTU, ESTONIA

The impact of vaccination and vaccines

Cathrin Jeppessen, OXFORD, UK - TBC

The impact of migration, immigration and tourism

Bettina Pfausler, INNSBRUCK, AUSTRIA

Incidence of infections of the central nervous system is changing due to influence by environmental factors including climate changes and agricultural developments, as well human behaviour – migration and tourism –, and vaccination. This workshop will give an update on developments in occurrence of neuroinfections. Developments in vaccination activities have changed the profile of incidence of neuroinfections. Climatic changes have caused broadening of areas and seasons of arthropode-borne diseases, resulting in increasing number of cases. High mobility of people migrating and visiting foreign countries has posed a risk of infections, thus immunisation for vaccine-preventable diseases is essential for travellers.

MONDAY, JUNE 22, 2015

11:00-12:30

FOCUSED WORKSHOP 21 ADULT-ONSET LEUKODYSTROPHIES

Chairperson:

Wolfgang Köhler, WERMSDORF, GERMANY

A practical approach to the diagnosis in adult-onset leukodystrophies

Wolfgang Koehler, WERMSDORF, GERMANY

Acquired disorders mimicking adult-onset leukodystrophies

Ettore Salsano, MILAN, ITALY

Gene therapy for hereditary metabolic leukoencephalopathies

Patrick Aubourg, PARIS, FRANCE

Leukodystrophies are chronic progressive inherited white matter diseases frequently combined with an inborn error of metabolism. Better understanding of leukodystrophies in neurological routine practice is of crucial importance in the differentiation from other white matter diseases like toxic, inflammatory or vascular leukoencephalopathies. Many leukodystrophies are particularly important to recognize because specific treatments already exist or are currently under investigation. Using clinical, neurophysiological and MRI criteria adult-onset leukodystrophies can be delineated more precisely, facilitating diagnostic confirmation by genetic testing.

MONDAY, JUNE 22, 2015

11:00-12:30

FOCUSED WORKSHOP 22 ANTIBODIES IN NEUROPATHY

Chairperson:

Simon Rinaldi, GLASGOW, UK

**The glycolipid landscape of neural membranes:
redefining the target for neuropathy-associated
autoantibodies**

Simon Rinaldi, OXFORD, UK

**Autoantibodies to proteins in the nodal complex in
inflammatory neuropathy**

Isabel Illa, BARCELONA, SPAIN

**Neuropathy-associated autoantibodies and their
intracellular and membrane antigens in systemic
diseases and cancer**

Jean-Philippe Camdessanché, ST-ETIENNE, FRANCE

In this focused workshop the participants will learn

1. To gain an understanding of the different classes of neuropathy associated antibodies.
2. To review the range of anti-glycolipid antibodies and their clinical associations.
3. To appreciate the impact of the glycolipid-glycolipid interactions and antigen turnover on antibody binding and pathogenicity.
4. To review the functional anatomy of the nodal complex with respect to neuropathy associated antibodies.
5. To understand the evidence supporting a key pathological role for the nodal complex in inflammatory neuropathies.
6. To recognise the association between cancer, antibodies and peripheral nervous system pathology.
7. To appreciate the significance of intracellular versus membrane bound antigen targets.

MONDAY, JUNE 22, 2015

11:00-12:30

FOCUSED WORKSHOP 23 AUTOIMMUNE MYASTHENIA GRAVIS

Chairperson:

Klaus Toyka, WÜRZBURG, GERMANY

Novel mechanisms and antigen

Klaus Toyka, WÜRZBURG, GERMANY

Challenges in ocular myasthenia

Nils E. Gilhus, BERGEN, NORWAY

**New developments in the treatment of myasthenia
gravis**

Jan Verschuuren, LEIDEN, THE NETHERLANDS

Klaus Toyka will talk about the MG variant with IgG antibodies to MuSK, show the deleterious consequences of cholinesterase inhibitors in a mouse model warning against long-term pyridostigmine and discuss currently available treatments.

Nils Gilhus will discuss the optimal treatment of ocular MG, both to avoid generalization and minimize the ocular weakness. The diagnosis of ocular MG remains a challenge in some patients with negative antibody testing.

Jan Verschuuren will discuss the recent developments in the use of novel biological agents and small molecules in the treatment of MG. Several T cell receptors, B cell surface molecules, and complement or cytokine receptors are studied as possible new targets for a more efficacious and specific therapy for autoimmune MG.

MONDAY, JUNE 22, 2015

11:00-12:30

INTERACTIVE SESSION 3 MOVEMENT AND GAIT DISORDERS

Chairperson:

Dominic Paviour, LONDON, UK

Video session and case presentations

HANDS-ON COURSE 5 NEURO-OTOLOGY

Chairperson:

Eleftherios Papathanasiou, NICOSIA, CYPRUS

Benign paroxysmal positional vertigo: provocation and liberation manoeuvres

Thomas Lempert, BERLIN, GERMANY

Michael Strupp, MUNICH, GERMANY

Vestibular evoked myogenic potentials

Eleftherios Papathanasiou, NICOSIA, CYPRUS;

Dominik Straumann, ZURICH, SWITZERLAND

Video impulse test

Erich Schneider, MUNICH, GERMANY

Konrad Weber, ZURICH, SWITZERLAND

Neuro-otological bedside tests

Adolfo Bronstein, LONDON, UK

Marianne Dieterich, MUNICH, GERMANY

This course encompasses the major bedside and auxiliary tests for evaluating patients with vestibular signs and symptoms. A room rotating scheme has been designed with four stations, spending twenty minutes at each, with practical demonstrations. The benign paroxysmal positional vertigo (BPPV) and neuro-otological bedside test stations will involve the neuro-otological clinical examination and the treatment of BPPV with the different manoeuvres for each separate canal BPPV. The vestibular evoked myogenic potential station will use a common evoked potential system available in all neurophysiological laboratories. The head impulse station will demonstrate head mounted video systems commercially available for eye movement documentation.

Sold out!

MONDAY, JUNE 22, 2015

11:00-13:00

MDS-ES BASAL GANGLIA CLUB

Organised by the Movement Disorders Society

What have we learned about Parkinson's disease from neurosurgery?

Andres Lozano, TORONTO, CANADA

Tony Marsdon Award

TOURNAMENT BASIC

Chairpersons:

Antonio Federico, SIENA, ITALY

Gustave Moonen, CHARNEUX-HERVE, BELGIUM

Guido Stoll, WUERZBURG, GERMANY

T3101**14:45****The metabolic correlates of cognitive Impairment in amyotrophic lateral sclerosis: a 18F-FDG-PET study**A. Canosa¹, M. Pagani², A. Calvo¹, F.M. Nobili³, S.D. Morbelli³, S. Cammarosano¹, A. Montuschi¹, B. Iazzolino¹, A. Cistaro¹, A. Chio¹
¹TURIN, ²ROME, ³GENOA, ITALY**T3102****15:00****Pain manifestations in an MPTP-induced rat model of Parkinson's disease**A. Ciobica, R. Lefter, M. Paulet, V. Bild, M. Luca, D. Timofte
IASI, ROMANIA**T3103****15:15****Longitudinal DMN changes in cognitively preserved MS patients**R. Docimo, A. Bisecco, F. esposito, R. Sacco, A. D'Ambrosio, G. Muzzo, G. Pontillo, S. Bonavita, L. Lavorgna, M. Cirillo, G. Tedeschi, A. Gallo
NAPLES, ITALY**T3104****15:30****Phosphorylated alpha-synuclein in dermal nerve fibers of patients with multiple system atrophy**K. Doppler¹, J. Weis¹, K. Karl¹, S. Ebert², J. Ebentheuer², C. Trenkwalder², S. Klebe¹, J. Volkmann¹, C. Sommer¹
¹WÜRZBURG, ²KASSEL, GERMANY**T3105****15:45****New insights on the pathophysiology of fatigue in MS: a fMRI study of the motor network**P. Preziosa, M.A. Rocca, G. Riccitelli, A. Meani, M. Rodegher, B. Colombo, A. Falini, G. Comi, M. Filippi
MILAN, ITALY**T3106****16:00****Cerebral hemodynamics show different patterns between patients with obstructive sleep apnea and periodic limb movement sleep syndrome during nocturnal sleep**Z. Zhang, M. Laures, G. Hügli, M. Qi, R. Khatami
BARMELWEID, SWITZERLAND

MONDAY, JUNE 22, 2015

14:45-16:15

ORAL SESSION
AGEING AND DEMENTIA

Chairpersons:

Ana Verdelho, LISBON, PORTUGAL

Gunhild Waldemar, COPENHAGEN, DENMARK

O3101 **Grey and white matter MRI signatures of the frontotemporal lobar degeneration continuum**
14:45 F. Agosta¹, S. Galantucci¹, G. Magnani¹, A. Marcone¹, D. Martinelli¹, M.A. Volonté¹, N. Riva¹, S. Iannaccone¹, P.M. Ferraro¹, F. Caso¹, A. Chiò², G. Comi¹, A. Falini¹, M. Filippi¹
¹MILAN, ²TURIN, ITALY

O3102 **Alzheimer's disease neurodegeneration markers in Alzheimer's disease neuroimaging initiative**
15:00 D. Andriuta¹, V. Moullart¹, S. Schraen², M.-E. Meyer¹, O. Godefroy¹
¹AMIENS, ²LILLE, FRANCE

O3103 **Motor symptoms in healthy ageing and dementia: frequency, patterns and the relation between motor and cognitive functions**
15:15 T. Bak¹, G. Bennett², A. Symonds¹, M. Parra², M. Elamin², P. Connick², G. Holloway², S. Pal²
¹EDINBURGH, ²EDINBURGH, UNITED KINGDOM

O3104 **Effects of cardiovascular risk factors, dialysis and renal transplantation on plasma β -amyloid levels in chronic kidney disease: is there a contribution of renal dysfunction to neurodegeneration?**
15:30 J. Gronewold, H.-W. Klafki, E. Baldelli, B. Kaltwasser, U. Seidel, O. Todica, M. Volsek, U. Haubmann, A. Kribben, J. Wiltfang, H. Bruck, D.M. Hermann
 ESSEN, GERMANY

O3105 **Effect of moderate-to-high intensity endurance exercise in elderly community-dwelling persons with mild-moderate Alzheimer's disease**
15:45 G. Waldemar, K. Hoffmann, N. Sobol, K. Frederiksen, N. Beyer, A. Vogel, K. Vestergaard, H. Braendgaard, H. Gottrup, A. Lolk, L. Wermuth, S. Jacobsen, L. Laugesen, L. Gergeleffly, P. Høgh, E. Bjerregaard, B. Andersen, P. Johannsen, S. Hasselbalch
 COPENHAGEN, DENMARK

ORAL SESSION CEREBROVASCULAR DISEASES 2

Chairpersons:

Natan Bornstein, TEL AVIV, ISRAEL

Anna Czlonkowska, WARSAW, POLAND

O3106 Renal function, MRI brain changes and post-stroke cognitive impairment

14:45

N. Bornstein¹, E. Auriel¹, E. Kliper¹, S. Shenhar-Tsarfaty¹, A. Mike¹, D. Ben-Bashat¹, L. Shopin², H. Halleli¹, A.D. Korczyn²
¹TEL-AVIV, ISRAEL, ²TEL AVIV, ISRAEL

O3107 Influence of age and co-morbidities on the safety and efficacy of novel platelet inhibitors in acute ischemic stroke in mice

15:00

P. Kraft, M. Schuhmann, G. Stoll, B. Nieswandt, A. Zerneck, C. Kleinschnitz
WÜRZBURG, GERMANY

O3108 Predictors of new onset atrial fibrillation after an ischemic stroke.

15:15

C. Sabben, C. Guidoux, L. Sissani, P. Lavallée, D. Messika Zeitoun, P.G. Steg, P. Amarencu
PARIS, FRANCE

O3109 Lack of response to conventional glucose management in acute ischemic stroke patients and stroke outcome. The GLIAS-2 study

15:30

B. Fuentes Gimeno¹, B.E. Sanz Cuesta¹, P. Martínez Sánchez¹, R. Delgado Medeiros², J. Gallego³, M. Blanco⁴, M.T. Martínez Zabaleta⁵, M.D.M. Freijó Guerrero⁶, M. Alonso De Leciñana¹, J.C. Portilla⁷, A. Gil Nuñez¹, E. Díez Tejedor¹
¹MADRID, SPAIN, ²BARCELONA, SPAIN, ³NAVARRA, SPAIN, ⁴SANTIAGO DE COMPOSTELA, SPAIN, ⁵SAN SEBASTIAN, SPAIN, ⁶BILBAO, SPAIN, ⁷CÁCERES, SPAIN

O3110 Surveillance for atrial fibrillation in patients with cryptogenic stroke using an implantable loop recorder in a community hospital setting: real world validation of Crystal AF

15:45

A. Seiler, J. Allred, S. Biby, P. Sethi
GREENSBORO, USA

O3111 Concomitant headache in acute ischaemic stroke: relation with CT angiography and CT perfusion characteristics

16:00

H. van Os¹, I. Mulder¹, M. van Walderveen¹, I. van der Schaaf², J. Kappelle², M. Ferrari¹, A. Algra², M. Wermer¹
¹LEIDEN, ²UTRECHT, THE NETHERLANDS

MONDAY, JUNE 22, 2015

14:45-16:15

ORAL SESSION
COGNITIVE NEUROLOGY

Chairpersons:

Frederik Barkhof, AMSTERDAM, THE NETHERLANDS

Stefano F. Cappa, MILAN, ITALY

O3112 Connected speech production in the nonfluent variant of primary progressive aphasia and its relationship with white matter damage

14:45

E. Canu, F. Agosta, S. Galantucci, E. Catricalà, P.M. Ferraro, G. Magnani, A. Marcone, G. Comi, A. Falini, M. Filippi
MILAN, ITALY**O3113** Spontaneous eye movements in Parkinson's disease correlate with default mode network functional connectivity

15:00

M. Gorges, H.-P. Müller, A.C. Ludolph, E.H. Pinkhardt, J. Kassubek
ULM, GERMANY**O3114** Transcranial direct current stimulation in language disorders in semantic primary progressive aphasia: "Towards a rational therapy in degenerative diseases of language"

15:15

C. Lesoil, J. Godard, M. Teichmann, A. Valero-Cabre, M. Vernet, R. Levy, B. Dubois
PARIS, FRANCE**O3115** Randomized controlled trial on hemifield eye patching and optokinetic stimulation in acute spatial neglect

15:30

B. Machner, I. Koenemund, A. Sprenger, J. von der Gablentz, C. Helmchen
LÜBECK, GERMANY**O3116** Discourse impairment in early Alzheimer's disease may reflect memory retrieval difficulties rather than lexical ones

15:45

A. Pistono, M. Jucla, E. Barbeau, L. Saint-Aubert, M. Puel, J. Pariente
TOULOUSE, FRANCE**O3117** Cognitive functions in multiple system atrophy and progressive supranuclear palsy

16:00

S. Skelina, R. Pavlova, M. Petrova, S. Mehrabian, L.D. Traykov
SOFIA, BULGARIA

ORAL SESSION NEUROIMAGING

Chairpersons:

Jacques De Reuck, GHENT, BELGIUM

- 03118** **Regional white matter abnormalities and cognitive impairment in MS: a multicenter TBSS study**
14:45 A. Biseco¹, M.A. Rocca¹, E. Pagani¹, O. Ciccarelli², C. Enzinger³, A. Gallo⁴, H. Vrenken⁵, M.L. Stromillo⁶, T.A. Yousry², F. Fazekas³, G. Tedeschi⁴, F. Barkhof⁵, N. De Stefano⁶, M. Filippi¹
¹MILAN, ITALY, ²LONDON, UNITED KINGDOM, ³GRAZ, AUSTRIA, ⁴NAPLES, ITALY, ⁵AMSTERDAM, THE NETHERLANDS, ⁶SIENA, ITALY
- 03119** **Multimodal TMS/EEG, FDG-PET and active fMRI assessments in patients with disorders of consciousness and locked-in syndrome.**
15:00 O. Bodart¹, S. Wannez¹, A. Thibaut¹, J. Annen¹, A.G. Casali², S. Casarotto³, M. Rosanova³, O. Gosseries⁴, M. Massimini³, S. Laureys¹
¹LIEGE, BELGIUM, ²SAO PAULO, BRAZIL, ³MILAN, ITALY, ⁴MADISON, USA
- 03120** **Topography of cortical microbleeds in Alzheimer's disease with and without cerebral amyloid angiopathy: a post-mortem 7.0-Tesla magnetic resonance imaging study.**
15:15 J.L. De Reuck
 LILLE, FRANCE
- 03121** **Multicenter analysis of the structural connectome in Amyotrophic Lateral Sclerosis in >250 patients**
15:30 H.-P. Müller¹, S. Abrahams², P. Bede³, M. Filippi⁴, V. Govind⁵, J. Grosskreutz⁶, J. Prudlo⁷, M.R. Turner⁸, J. Kassubek¹, M. Gorges¹, The Neuroimaging Society in ALS (NiSALS) DTI Study Group¹
¹ULM, GERMANY, ²EDINBURGH, UNITED KINGDOM, ³DUBLIN, IRELAND, ⁴MILAN, ITALY, ⁵MIAMI, USA, ⁶JENA, GERMANY, ⁷ROSTOCK, GERMANY, ⁸OXFORD, UNITED KINGDOM
- 03122** **Processing face encoding in multiple sclerosis: an fMRI investigation**
15:45 L. Vacchi, M.A. Rocca, G. Riccitelli, M. Rodegher, V. Martinelli, F. Possa, A. Falini, G. Comi, M. Filippi
 MILAN, ITALY
- 03123** **White matter and cortical degeneration in progressive supranuclear palsy**
16:00 S. Zanigni, S. Evangelisti, D.N. Manners, G. Calandra-Buonaura, L. Sambati, M. Guarino, A. Gabellini, P. Cortelli, R. Lodi, C. Tonon
 BOLOGNA, ITALY

MONDAY, JUNE 22, 2015

14:45-16:15

ORAL SESSION
CEREBROVASCULAR DISEASES 3

Chairpersons:

José Ferro, LISBON, PORTUGAL

Didier Leys, LILLE, FRANCE

- 03201** Age and "rich club" status affect the vulnerability of the structural connectome to stroke: a study of simulated lesions in older adults
16:45 R. Berlot¹, M. O'Sullivan²
¹LJUBLJANA, SLOVENIA, ²LONDON, UNITED KINGDOM
- 03202** Occurrence of early seizures in patients with non-traumatic spontaneous intracerebral hemorrhage may improve the survival
17:00 T. Bruening¹, M. Al-Khaled²
¹HAMBURG, ²LÜBECK, GERMANY
- 03203** Seizure burden in patients with subarachnoid hemorrhage: association with functional and cognitive outcome at 3 months
17:15 G.M. De Marchis¹, D. Pugin², E. Meyers³, A. Velasquez³, S. Park³, M.C. Falo³, S. Agarwal³, S. Mayer³, J.M. Schmidt³, E.S. Connolly³, J. Claassen³
¹BASEL, SWITZERLAND, ²GENEVA, SWITZERLAND, ³NEW YORK, USA
- 03204** Predictors of unruptured cerebral aneurysms in patients with headache: findings from the Nationwide Inpatient Sample (NIS) 2011 Database
17:30 N. Jadeja, A. Ramesh, K. Nalleballe, P. Mabie, L. Ocava
 NEW YORK, USA
- 03205** Depressive symptoms following stroke and TIA: is it Time for a more intensive treatment approach? results from the TABASCO cohort study
17:45 O. Tene, S. Shenhar-Tsarfaty, A.D. Korczyn, E. Kliper, H. Hallevi, L. Shopin, E. Auriel, A. Mike, N. Bornstein, E. Ben Assayag
 TEL AVIV, ISRAEL
- 03206** Effect of intravenous thrombolysis on stroke patients with atrial fibrillation treated in Lille (France) and Belgrade (Serbia)
18:00 V. Padjen¹, M. Bodenant², D. Jovanovic¹, N. Ponchelle-Dequatre², C. Cordonnier², I. Berisavac¹, M. Ercegovac¹, P.D. Stanarcevic¹, M. Stefanović Budimkić¹, L. Beslac Bumbasirevic¹, D. Leys²
¹BELGRADE, SERBIA, ²LILLE, FRANCE

ORAL SESSION MUSCLE AND NEUROMUSCULAR JUNCTION DISEASE

Chairpersons:

Nils Erik Gilhus, BERGEN, NORWAY

Angela Vincent, OXFORD, UNITED KINGDOM

-
- 03207** **Geographical distribution of myasthenia gravis**
16:45 M. Boldingh¹, A. Maniaol¹, C. Brunborg¹, L. Dekker²,
 A.T. Heldaal³, A.F. Lipka², T.H. Popperud¹, E.H. Niks²,
 J.J. Verschuuren², C. Tallaksen¹
¹OSLO, NORWAY, ²LEIDEN, THE NETHERLANDS, ³BERGEN, NORWAY
- 03208** **Evaluation of dysphagia in inclusion body myositis by novel real-time MRI**
17:00 P.-O. Carstens, S. Zhang, A. Olthoff, E. Bremen, J. Lotz,
 J. Frahm, J. Schmidt
 GÖTTINGEN, GERMANY
- 03209** **Genetics of myasthenia gravis: a case control genetic association study in Han Chinese population**
17:15 H. Li¹, Y. Hong²
¹JINAN, CHINA, ²BERGEN, NORWAY
- 03210** **Long-term follow-up of patients with dystrophin deficiency and isolated hyperckemia**
17:30 P. Marti, N. Muelas, F. Mayordomo, I. Azorin, C. Gomis,
 C. Millan, M. Frassetto Carrera, T. Sevilla, J.J. Vilchez
 VALENCIA, SPAIN
- 03211** **Severe myotonia in myotonic dystrophy type 2 caused by CLCN1 or SCN4A mutations acting as modifying factors**
17:45 G. Meola¹, E. Bugiardini¹, R. Cardani¹, A. Botta², G. Rossi²,
 I. Merli¹, B. Fossati¹
¹SAN DONATO MILANESE (MI), ²ROME, ITALY
- 03212** **Intracranial arterial abnormalities in patients with late onset Pompe's disease (LOPD)**
18:00 F. Montagnese, F. Granata, O. Musumeci, C. Rodolico,
 M. Longo, A. Toscano
 MESSINA, ITALY

MONDAY, JUNE 22, 2015

16:45-18:15

ORAL SESSION
NEUROIMMUNOLOGY

Chairpersons:

Jerôme Honnorat, LYON, FRANCE

Per Soelberg Sorensen, COPENHAGEN, DENMARK

03213 Auto-antibodies against contactin-1 in patients with inflammatory neuropathy

16:45

L. Appeltshauser¹, K. Doppler¹, C. Villmann¹, H. Krämer², M. Mäurer³, S. Dib-Hajj⁴, S. Waxman⁴, A. Weishaupt¹, C. Sommer¹¹WÜRZBURG, ²GIESSEN, ³BAD MERGENTHEIM, GERMANY,⁴NEW HAVEN, USA**03214** Paraneoplastic neurological syndromes associated with

17:00

antibodies against glutamic acid decarboxylase

H. Ariño¹, R. Höftberger¹, E. Martínez-Hernández¹, T. Armangué¹, M. Kruer², J. Arpa³, J. Domingo³, B. Rojc⁴, L. Bataller⁵, A. Saiz¹, J. Dalmau⁶, F. Graus¹¹BARCELONA, SPAIN, ²SOUTH DAKOTA, USA, ³MADRID, SPAIN,⁴IZOLA, SLOVENIA, ⁵VALENCIA, SPAIN, ⁶PHILADELPHIA, USA**03215** Immune cell brain-derived neurotrophic factor (BDNF) expression is associated with thalamic volume and third ventricle enlargement in neurolupus patients

17:15

A. Kalinowska-Lyszczarz, M. Pawlak, S. Michalak,

K. Pawlak-Buś, P. Leszczynski, M. Puszczewicz,

W. Paprzycki, W. Kozubski

POZNAN, POLAND

03216 Stability of cognitive functions in MS patients treated with fingolimod over one year

17:30

R. Linker, K. Utz, A. Waschbisch, D.-H. Lee, T. Schenk

ERLANGEN, GERMANY

03217 Clinical spectrum of patients with possible autoimmune encephalopathy

17:45

J. Martins¹, A. Rua¹, A.P. Correia¹, R. Taipa¹,A. Martins Silva¹, E.P. Coutinho², E. Santos¹¹PORTO, PORTUGAL, ²OXFORD, UNITED KINGDOM**03218** Adherence and cognitive-behavioral performance in relapsing-remitting MS (RRMS) patients using the electronic autoinjector RetainSmart™: 1 year of follow-up from the German multicentre RETAINSmart study

18:00

H. Schreiber¹, J. Gössling², R. Hartmann³, K. Gehring⁴, K. Gößwein⁵, C. Bischoff⁶, M. Lang¹, S. Braune⁷, U. Fulda⁸, A. Bergmann⁵¹ULM, ²BUCHHOLZ, ³ELTVILLE, ⁴ITZEHOE, ⁵NEUBURG, ⁶MUNICH,⁷PRIEN, ⁸DARMSTADT, GERMANY

MONDAY, JUNE 22, 2015

16:45-18:15

LATE BREAKING NEWS

Chairpersons:

Paul Boon, GHENT, BELGIUM

Franz Fazekas, GRAZ, AUSTRIA

L101**16:45****Self-management education for adults with poorly controlled epilepsy: the SMILE trial**

L. Ridsdale

LONDON, UNITED KINGDOM

L102**17:00****Alemtuzumab decreases new lesion formation and slows the rate of brain atrophy in relapsing-remitting multiple sclerosis patients previously treated with subcutaneous interferon beta-1a**E. Barkhof¹, A. Rovira², T. Ziemssen³, D.H. Margolin⁴, L. Kasten⁴, D.L. Arnold⁵¹AMSTERDAM, THE NETHERLANDS, ²BARCELONA, SPAIN,³DRESDEN, GERMANY, ⁴CAMBRIDGE, USA, ⁵MONTREAL,

CANADA

L103**17:15****Current status of ISIS-TTRx phase 3 study in patients with transthyretin familial amyloid polyneuropathy (FAP)**T. Coelho¹, A. Martins Silva¹, E. Ackermann²,M.M. Yamashita², S. Hughes², B. Monia²¹PORTO, PORTUGAL, ²CARLSBAD, USA

MONDAY, JUNE 22, 2015

14:45-18:15

TEACHING COURSE 13 PARKINSON'S DISEASE TREATMENT: INFUSION THERAPIES AND DBS – LEVEL 1

Chairperson:

Angelo Antonini, VENICE, ITALY

Initial treatments in Parkinson's disease

Werner Poewe, INNSBRUCK, AUSTRIA

How to select patients for invasive treatment

Angelo Antonini, VENICE, ITALY

Levodopa and apomorphine infusion

Regina Katzenschlager, VIENNA, AUSTRIA

Deep brain stimulation

Francesc Valldeoriola, BARCELONA, SPAIN

This course focuses on invasive treatments for Parkinson's disease including levodopa and apomorphine pump infusions and deep brain stimulation. The first lecture will provide participants with an overview of treatments for PD and the second lecture will focus on selecting patients for invasive therapies. Finally, the last two lectures will focus on the results of infusion clinical trials and DBS therapies specifically and present technique specific complexity in management and adverse events.

MONDAY, JUNE 22, 2015

14:45-18:15

TEACHING COURSE 14 THERAPEUTIC STRATEGIES IN MULTIPLE SCLEROSIS – LEVEL 1-2

Chairperson:

Alan Thompson, LONDON, UK

**Overview symptom management
(motor disturbance, spasticity and fatigue)**

Alan Thompson, LONDON, UK

**First-line disease modifying treatments
(when to start/stop?)**

Xavier Montalban, BARCELONA, SPAIN

Second line / switching - when and how?

Bernd Kieseier, DÜSSELDORF, GERMANY

Complications and safety

Aksel Siva, ISTANBUL, TURKEY

The ever-increasing number of therapeutic options now available in multiple sclerosis (MS) has transformed patient management but has also added a new layer of complexity. Utilising these treatments in an appropriate and effective manner requires a sound understanding of when and how they should be introduced informed by a comprehensive knowledge of their efficacy and their side-effect profile. This session describes an up to date understanding of our use of all the agents available to us in the treatment of MS, including the concept of first and second line treatments, symptomatic management and importantly the complex safety and side-effect profile.

MONDAY, JUNE 22, 2015

14:45-18:15

TEACHING COURSE 15
EPILEPSY - MANAGEMENT OF THE
REFRACTORY PATIENT - LEVEL 3

Chairperson:

Reetta Kälviäinen, KUOPIO, FINLAND

When is the epilepsy truly medically refractory?

Reetta Kälviäinen, KUOPIO, FINLAND

Imaging of refractory epilepsy

Paul Hofman, MAASTRICHT, THE NETHERLANDS

Epilepsy syndromes amenable to epilepsy surgery

Martin Holtkamp, BERLIN, GERMANY

Neurostimulation strategies for epilepsy

Kristl Vonck, GHENT, BELGIUM

MONDAY, JUNE 22, 2015

14:45-18:15

TEACHING COURSE 16 FACIAL PAIN: DIAGNOSIS AND MANAGEMENT – LEVEL 2

Chairperson:

Lars Bendtsen, COPENHAGEN, DENMARK

Trigeminal neuralgia

Lars Bendtsen, COPENHAGEN, DENMARK

Trigeminal autonomic cephalalgias

Arne May, HAMBURG, GERMANY

Persistent idiopathic facial pain

Rafael Benoliel, NEWARK, USA

Temporomandibular disorders

Corine Visscher, AMSTERDAM, THE NETHERLANDS

In neurological practice, patients with facial pain are regarded as difficult to diagnose and treat. The evidence for existing treatment strategies is very scarce or completely lacking. Many patients with suspected trigeminal neuralgia are referred directly to neurosurgery for invasive treatments with a risk of severe or lethal complications. The objective is to improve the diagnostic strategies, to optimize medical treatment and clinical decision-making, based on scientific evidence and specialist experience, and to raise scientific interest in facial pain.

MONDAY, JUNE 22, 2015

16:45-18:15

TEACHING COURSE 17 INTERVENTIONS IN NEUROCRITICAL CARE – LEVEL 2

Chairperson:

Cristina Panea, BUCHAREST, ROMANIA

Fluid and electrolyte management

Cristina Panea, BUCHAREST, ROMANIA

Analgesia and sedation, and relaxation

Ronny Beer, INNSBRUCK, AUSTRIA

Nutrition in the neuro ICU

Murat Arsava, ANKARA, TURKEY

Lumbar drainage vs. ventricular drain

Dimitre Staykov, EISENSTADT, AUSTRIA

The aim of neurological critical care is to provide, in a prompt fashion, acute medical therapies and appropriate interventions in neurological illnesses accompanied by CNS/PNS- and/or organ dysfunction. This Teaching Course will focus on major aspects of care for various neurological pathologies necessitating diagnostic and/or therapeutic neuro-critical care management. Starting from basic knowledge, the lectures concentrate on the latest guideline recommendations and expert' opinions in each topic. At the end of the course the participants will be able to:

- assess the needs of nutrition, water and electrolyte intake, evaluate and provide adequate therapeutic approach in different clinical conditions
- understand the differential indications, mechanisms, benefits and risks of analgesia, sedation and relaxation and should be able to apply these modern techniques in NICU patients.
- know the indications, contraindications and risks of lumbar drainage and ventricular drainage in NICU patients

These lectures, offered in an interactive manner, should allow neurologists to manage these fundamental issues of critical patient care regardless of the administrative organization of the working unit.

MONDAY, JUNE 22, 2015

14:45-18:15

TEACHING COURSE 18 IMPACT AND MANAGEMENT OF SLEEP DISORDERS IN NEUROLOGY – LEVEL 1

Chairperson:

Luigi Ferini-Strambi, MILAN, ITALY

Burden of sleep disorders in neurology

Poul Jennum, COPENHAGEN, DENMARK

Main differential diagnosis

Geert Mayer, SCHWALMSTADT, GERMANY

Diagnostic approach

Alex Iranzo, BARCELONA, SPAIN

Management of sleep disorders

Luigi Ferini-Strambi, MILAN, ITALY

Recently, a bidirectional relationship between sleep and neurological disorders has been demonstrated. Sleep disturbances are very common and often occur early in the course of neurological disorders, such as Parkinson disease and Alzheimer disease. Moreover, sleep disturbances may influence the course and outcome of neurological disorders. For example, sleep disordered breathing may affect cognition and worsen the outcome of stroke and epilepsy.

The objective of the course is to understand how to approach sleep problems in a neurological patient. The importance of a structured clinical interview will be explained and the sleep diagnostic tests will be presented. A part of the course will be dedicated to the pharmacological and non-pharmacological approaches of sleep disorders in neurology.

See you at **ESOC** 2016

10-12 May, Barcelona

The 2nd European Stroke Organisation Conference 2016

10-12 May, 2016
Barcelona, Spain



www.ESOC2016.com



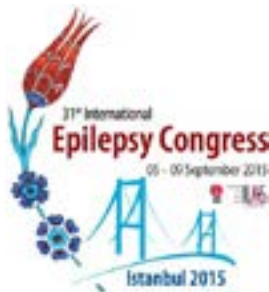
Kenes International Organizers of Congresses S.A.
7, rue François-Versonnex, 1207 Geneva, Switzerland
Tel: +41 22 908 0488 | Fax: +41 22 906 9140

TUESDAY, JUNE 23, 2015

SESSIONS



31st INTERNATIONAL EPILEPSY CONGRESS



ISTANBUL, TURKEY, 5-9 SEPTEMBER 2015

JOINTLY ORGANISED BY THE INTERNATIONAL LEAGUE AGAINST EPILEPSY AND THE INTERNATIONAL BUREAU FOR EPILEPSY

REGISTRATION – To facilitate registration of delegates, registration fees have been considerably reduced. In conjunction with this, members of an ILAE Chapter or an IBE Member Association get an additional discount.

WHY ATTEND?

- **EARN** CME accreditation
- **LEARN** about the most significant research developments in epilepsy
- **MEET** influential leaders from world leading epilepsy institutions
- **NETWORK** with many colleagues from around the world

For further information regarding all of the above, please visit



www.epilepsyistanbul2015.org



SYMPOSIUM 7
MULTIPLE SCLEROSIS THERAPY MOVING FORWARD/ WHERE IS THE TRUTH? HOPES AND HAZARDS

Chairpersons:

Hans-Peter Hartung, DÜSSELDORF, GERMANY

Catherine Lubetzki, PARIS, FRANCE

MS pathogenesis – where is it heading now?

Finn Sellebjerg, COPENHAGEN, DENMARK

Injectable first-line therapies in MS (INF & GA) – do they still have a place in MS therapy?

Ludwig Kappos, BASEL, SWITZERLAND

Current MS therapies

Hans-Peter Hartung, DÜSSELDORF, GERMANY

The future of MS therapies – how soon, how far? How effective, how safe?

Catherine Lubetzki, PARIS, FRANCE

TUESDAY, JUNE 23, 2015

08:00-10:00

SYMPOSIUM 8 INFECTIONS OF THE CENTRAL NERVOUS SYSTEM: RECENT ADVANCES

Chairpersons:

Erich Schmutzhard, INNSBRUCK, AUSTRIA

Israel Steiner, PETACH TIKVA, ISRAEL

New diagnostic techniques in central nervous system infections

Israel Steiner, PETACH TIKVA, ISRAEL

New antimicrobial therapeutics in community acquired and nosocomial meningitis and brain abscess

Diederik van de Beek, AMSTERDAM, THE NETHERLANDS

Adjunctive therapies in life-threatening CNS infections

Erich Schmutzhard, INNSBRUCK, AUSTRIA

News in prevention of CNS infections

Timo Vesikari, TAMPERE, FINLAND

TUESDAY, JUNE 23, 2015

10:30-12:00

MEDITERRANEAN SESSION – JOINTLY
ORGANISED BY EAN AND PAUNS
(PAN ARAB UNION OF NEUROLOGICAL
SOCIETIES): POST-STROKE SEQUELAE

Chairpersons:

Mohammed S. El-Tamawy, LAIRO, EGYPT

Jean-Michel Vallat, LIMOGES, FRANCE

Post-stroke dementia

Riadh Gouider, TUNIS, TUNISIA

Post-stroke depression

Mohamed Ezzat Elwan, CAIRO, EGYPT

Stroke-related seizures

Jacques De Reuck, GHENT, BELGIUM

Post-stroke rehabilitation

Jozef Opara, TARNOWSKIE GÓRY, POLAND

TUESDAY, JUNE 23, 2015

10:30-12:00

HISTORY OF NEUROLOGY SESSION

Chairperson:

Axel Karenberg, COLOGNE, GERMANY

Interdependence of European and German neurology

Peter Koehler, HEERLEN, THE NETHERLANDS

**Interdependence of European and World neurology
(the different schools: England, France, Spain,
Germany - Japan, China, South America - foundation
of the WFN - relation to WHO)**

Francois Boller, WASHINGTON, USA

TUESDAY, JUNE 23, 2015

10:30-12:30

EAYNT (EUROPEAN ASSOCIATION OF YOUNG NEUROLOGISTS AND TRAINEES):

From study design to clinical practice and EBN neurology exam

Chairperson:

TBA

About study designs

Maurizio A. Leone

Lost in translation, how to apply research in clinical practice

Speaker: TBC

EBN neurology examination

Jan Kuks, XXX

Update on movement disorders

Speaker: TBC

TUESDAY, JUNE 23, 2015

10:30-12:15

HIGHLIGHTS OF THE CONGRESS & CLOSING SESSION

Chairperson:

Matthias Endres, BERLIN, GERMANY

Günther Deuschl, KIEL, GERMANY (TBC)



Andrew Chan, BOCHUM, GERMANY

Richard Dodel, MARBURG, GERMANY

Oliver Kastrop, ESSEN, GERMANY

Christoph Kleinschnitz, WÜRZBURG, GERMANY

Felix Rosenow, MARBURG, GERMANY

Claudia Sommer, WÜRZBURG, GERMANY

Lars Timmermann, KÖLN, GERMANY

After the presentation of the Congress Highlights the winners of the Tournament Prizes will be announced and receive their certificates. Afterwards there will be a short introduction to the upcoming congress and the host city Copenhagen 2016
Closing words by Günther Deuschl, EAN President

TUESDAY, JUNE 23, 2015

13:00-16:30

TEACHING COURSE 19 MOVEMENT DISORDERS ASSOCIATED WITH AUTO-ANTIBODIES – LEVEL 2

Chairperson:

Angela Vincent, OXFORD, UK

Paraneoplastic and NMDA receptor

Jérôme Honnorat, LYON, FRANCE

Voltage gated potassium channel complex and glycine receptor

Angela Vincent, OXFORD, UK

PANDAS, antiphospholipid and others

Davide Martino, LONDON, UK

A clinical review and approach to autoimmune movement disorders

Joseph Jankovic, HOUSTON, USA

Auto-antibodies cause various neurological conditions, which could present movement disorders as prominent feature. It is important to recognize and diagnose the underlining disorders because they can be treated and dramatically improve patient outcomes. This teaching course will focus on paraneoplastic and Paediatric Autoimmune Neuropsychiatric Disorders (PANDAS) as well as disorders that are associated with NMDA, voltage gated, antiphospholipid and other auto-antibodies. The final presentation will be a clinical review and approach to autoimmune movement disorders that will include take-away messages for clinicians who may encounter these patients in their clinical practice.

TUESDAY, JUNE 23, 2015

13:00-16:30

TEACHING COURSE 20 CLINICAL AND THERAPEUTICAL APPROACH TO MUSCLE DISORDERS – LEVEL 1

Chairperson:

Corrado Angelini, PADOVA, ITALY

Fatigue and exercise intolerance

Antonio Toscano, MESSINA, ITALY

Antibodies and clinical outcome in neuromuscular diseases

Nils Erik Gilhus, BERGEN, NORWAY

When to perform a muscle biopsy in muscle pain, cramps or hyperCKemia

Corrado Angelini, PADOVA, ITALY

Therapeutic approaches to muscle diseases

Marianne de Visser, AMSTERDAM, THE NETHERLANDS

This teaching course is for the general neurologist and diverse groups of professionals to inform them how to deal with biomarkers and clinical presentation of neuromuscular disorders. This course will introduce the problem of biomarkers, such as antibodies and CK. These serum biomarkers will indicate, according to international guidelines, when to perform muscle biopsy and how they correlate with the course of the disease. The problem of exercise intolerance and fatigue will be analysed and therapy approaches to neuromuscular disorders will be presented. The course attendee will be able to correlate clinical presentation with both diagnostic issues and treatment.

TUESDAY, JUNE 23, 2015

13:00-16:30

TEACHING COURSE 21 THE NEUROLOGICAL BEDSIDE EXAMINATION - PRINCIPLES AND PRACTICE - LEVEL 1

Chairperson:

Klaus V. Toyka, WÜRZBURG, GERMANY

Cranial nerves

Jean Schoenen, LIÈGE, BELGIUM

Motor-sensory and reflexes

Klaus V. Toyka, WÜRZBURG, GERMANY

Functional disorders

Mark J. Edwards, LONDON, UK

Neuropsychology and higher cortical functions

Joseph Classen, LEIPZIG, GERMANY

A formal neurological history taking and bedside examination form the basis of the neurological diagnosis. Only then ancillary tests can be ordered in a logical way. The course provides essential facts about the examination starting with cranial nerves, motor and sensory system including proper reflex testing, and lastly neuropsychology and higher cortical functions. Functional or psychogenic neurological symptoms are one of the commonest reasons for patients to seek help from a neurologist. Basic skills and special examination techniques in functional disorders will be covered that allow neurologists to make a positive confident diagnosis.

TUESDAY, JUNE 23, 2015

13:00-16:30

TEACHING COURSE 22 ASSESSMENT AND TREATMENT OF NEUROPATHIC PAIN IN CLINICAL PRACTICE – LEVEL 2

Chairperson:

Didier Bouhassira, BOULOGNE-BILLANCOURT, FRANCE

Use and misuse of screening tools and assessment questionnaires for neuropathic pain

Didier Bouhassira, BOULOGNE-BILLANCOURT, FRANCE

What is the place of standard neurological examination and quantitative sensory testing?

Per Hansson, STOCKHOLM, SWEDEN

What is the place of neurophysiological examination?

Giorgio Cruccu, ROMA, ITALY

Management of neuropathic pain

Claudia Sommer, WÜRZBURG, GERMANY

This teaching course will address various aspects of the management of neuropathic pain. First, we will discuss the interest and limitations, both in daily practice and clinical research, of a series of screening tools developed and validated over the last decade. Then, in addition to the standard bedside clinical examination, the contribution for the assessment of the patients of other methods and technics, such as quantitative sensory testing and electrophysiology, will be addressed. Finally, an update about the treatment strategies of these chronic pain syndromes will be presented.

TUESDAY, JUNE 23, 2015

13:00-16:30

TEACHING COURSE 23
CURRENT TREATMENTS IN
NEUROLOGY II – LEVEL 2

Chairperson:

Walter Paulus, GÖTTINGEN, GERMANY

Update on chronic daily headache management

Peter Sandor, BADEN, SWITZERLAND

New treatment in restless legs

Diego Garcia Borreguero, MADRID, SPAIN

Managing of acute neurolept-induced changes

Niruj Agranoud, LONDON, UK

Transcranial stimulation (TMS, DC)

Walter Paulus, GÖTTINGEN, GERMANY

TUESDAY, JUNE 23, 2015

13:00-16:30

TEACHING COURSE 24 ATYPICAL ALZHEIMER'S DISEASE – LEVEL 2-3

Chairperson:

Stefano Cappa, MILAN, ITALY

Posterior cortical atrophy

Philip Scheltens, AMSTERDAM, THE NETHERLANDS

Logopenic aphasia

Stefano Cappa, MILAN, ITALY

Frontal Alzheimer's disease

Florence Pasquier, LILLE, FRANCE

Biomarkers for atypical Alzheimer's disease

Martin Rossor, LONDON, UK

"Typical" Alzheimer's disease (AD) is defined clinically by an onset characterised by progressive episodic memory dysfunction, reflecting pathological involvement of medial temporal lobe structures. It is now widely recognized that different clinical presentations may actually be associated with the pathological hallmarks of AD. These include progressive disorders of language, fulfilling the criteria for primary progressive aphasia, progressive visuo-spatial dysfunction (described as the posterior cortical atrophy syndrome), and progressive disorders of executive function and behaviour (possibly reflecting prominent prefrontal involvement).

Familiarity with these "atypical" phenotypes is crucial in cognitive neurology, not only because they are diagnostically challenging, but also because they may provide important insights into AD pathogenesis.

TEACHING COURSE 25 THE SPECTRUM OF NEURO-ONCOLOGY - LEVEL 2

Chairperson:

Riccardo Soffietti, TURIN, ITALY

How advanced neuroimaging is improving diagnosis and monitoring of gliomas

Riccardo Soffietti, TURIN, ITALY

Update on diagnosis and treatment of primary CNS lymphomas

Uwe Schlegel, BOCHUM, GERMANY

Metastatic complications of systemic cancer

Wolfgang Grisold, VIENNA, AUSTRIA

Non-metastatic complications of systemic cancer

Jérôme Honnorat, LYON, FRANCE

The aim of the TC is to give an update on a wide spectrum of neuro-oncologic topics in whom clinical neurologists are frequently involved.

R. Soffietti will discuss the usefulness of advanced MRI (MRS, perfusion, DTI) and PET with amino-acids techniques for differential diagnosis and treatment monitoring of gliomas after conventional and anti-angiogenic agents.

U. Schlegel will discuss two major issues in the management of PCNSL: how to improve the outcome with more aggressive and specific therapies. How to better spare the normal brain from the damage from therapies?

W. Grisold will update on the modern approach to brain, leptomeningeal and spinal metastases.

J. Honnorat will illustrate the large number of infectious, metabolic, paraneoplastic and treatment-related complications of systemic cancer.

Practice-changing content, expert opinion, and trusted perspective



The Lancet Neurology is the leading clinical neurology journal, delivering essential original research, expert review, and candid commentary to provide context and perspective on today's clinical advances.

Publishing only the highest quality clinical content, we are committed to its rapid dissemination with Fast Track online publication within 8 weeks of submission. With an Impact Factor of 21.823, we rank first among all clinical neurology journals.

Gain greater insight and stay well-informed with *The Lancet Neurology's* resources.

- High impact research and reviews
- Expert commentary and breaking news
- Free eToC and news alerts
- Free podcasts featuring renowned authors
- Specially commissioned Series and reports, many of which are freely available
- Newly relaunched! The Lancet iPad app with unlimited 24/7 access

**JOIN
US**

in delivering science
for better health

THE LANCET
Neurology

SATELLITE SYMPOSIA



20th International
Congress of Parkinson's
Disease and
Movement Disorders

JUNE 19-23, 2016
BERLIN, GERMANY



Save the Date
www.mdscongress2016.org



International Parkinson and
Movement Disorder Society

SATURDAY, JUNE 20, 2015

13:00-14:30

BIOGEN: A MULTIPLE SCLEROSIS PATIENT JOURNEY: WHAT DRIVES DECISIONS?

Chairperson:

David Bates, NEWCASTLE UPON TYNE, UK

Prognosis at onset: charting a course

Mar Tintoré, BARCELONA, SPAIN

Selecting treatment, SETTING GOALS: GUIDING THE WAY

Sven Meuth, MÜNSTER, GERMANY

Vigilant monitoring: compass bearings

Jens Wuerfel, BERLIN, GERMANY

Evidence informing treatment sequencing: Navigating change

James Overell, GLASGOW, UK

An exploration of patient management, engaging faculty in commentary and discussion throughout

SATURDAY, JUNE 20, 2015

13:00-14:30

UCB: THE HIPPOCRATIC OATH “DO NO HARM” – CONSIDERATIONS FOR THE LONG-TERM TREATMENT OF CHRONIC NEUROLOGICAL DISEASES

Chairperson:

Paul A.J.M. Boon, GHENT, BELGIUM

Enzyme induction: just a matter of managing drug-drug interactions

Martin J. Brodie, GLASGOW, UNITED KINGDOM

Practical considerations for treatment decisions in new or recently diagnosed epilepsy patients

Philippe Ryvlin, LYON, FRANCE

Benefit of early therapy for long-term outcome in Parkinson's disease

Lars Timmermann, COLOGNE, GERMANY

SATURDAY, JUNE 20, 2015

13:00-14:30

DR. WILLMAR SCHWABE: EXPECTATIONS MANAGEMENT FOR NEUROCOGNITIVE DISORDERS PATIENTS

Chairperson:

Ralph Ihl, KREFELD, GERMANY

**Treatment options in mild neurocognitive disorders
patients**

Reto Kressig, BASEL, SWITZERLAND

**Treatment management in major neurocognitive
disorders**

Serge Gauthier, VERDUN, CANADA

SUNDAY, JUNE 21, 2015

07:00-08:30

NOVARTIS: MS IN THE REAL WORLD

Chairperson:

Judith Haas, BERLIN, GERMANY

Increasing the evidence base: importance of imaging measures

Sven Schippling, ZÜRICH, SWITZERLAND

Brain volume loss and its role in evolving clinical outcome measures

Björn Tackenberg, MARBURG, GERMANY

Importance of real-world data collection for physicians and patients

Tjalf Ziemssen, DRESDEN, GERMANY

Summary and close

Judith Haas, BERLIN, GERMANY

SUNDAY, JUNE 21, 2015

13:00-14:30

NOVARTIS: THE UNSOLVED MYSTERY OF MS: EVOLVING THE TREATMENT PARADIGM TO IMPROVE PATIENT OUTCOMES

Chairperson:

Heinz Wiendl, MÜNSTER, GERMANY

The first clues: treating early to impact disease activity

Bernd Kieseier, DÜSSELDORF, GERMANY

**Collecting the evidence: measuring brain volume loss in
clinical practice**

Eva Havrdová, PRAGUE, CZECH REPUBLIC

**Accumulating evidence: brain volume loss and long-term
disability**

Maria Pia Sormani, GENOA, ITALY

**Building the case: impacting patient outcomes across
four measures of disease activity**

Jaume Sastre-Garriga, BARCELONA, SPAIN

Summary and close

Heinz Wiendl, MÜNSTER, GERMANY

SUNDAY, JUNE 21, 2015

13:00-14:30

BRITANNIA: NON ORAL DRUG DELIVERY STRATEGIES; FROM EARLY DIAGNOSIS TO ADVANCED TREATMENTS

Chairpersons:

Claudia Trenkwalder, KASSEL, GERMANY

Werner Poewe, INNSBRUCK, AUSTRIA

Gastrointestinal dysfunction in Parkinson's disease

Werner Poewe, INNSBRUCK, AUSTRIA

Wearing off and delayed on – motor and non-motor fluctuations

Fabrizio Stocchi, ROME, ITALY

Apomorphine Penject - AMIMPAKT trial results and best clinical practice

Stuart Isaacson, MIAMI, UNITED STATES

SUNDAY, JUNE 21, 2015

13:00-14:30

ACTELION: A NEW AGE IN DETECTION,
DIAGNOSIS AND DISEASE
MANAGEMENT: FUNDAMENTAL
PROGRESS IN NIEMANN PICK DISEASE
TYPE C

Chairperson:

Paul Gissen, LONDON, UNITED KINGDOM

**Diagnostic difficulties: the broad spectrum of symptoms
in NP-C**

Paul Gissen, LONDON, UNITED KINGDOM

**Frequently overlooked signs: oculomotor abnormalities
in NP-C**

Michael Leo Strupp, MUNICH, GERMANY

The hunt for NP-C: ataxia as a key neurological sign

Mathieu Anheim, STRASBOURG, FRANCE

**Identifying and managing neurological disorders:
lessons from adults with NP-C**

Jordi Gascon Bayarri, BARCELONA, SPAIN

Q & A

SUNDAY, JUNE 21, 2015

13:00-14:30

GENZYME: SUSPICIOUS MINDS – WHY, WHERE AND HOW TO LOOK FOR FABRY'S AND POMPE'S DISEASE IN THE NEUROLOGY SETTING

Chairperson:

Max Josef Hilz, ERLANGEN, GERMANY

Early diagnosis and treatment of Fabry's disease

Max Josef Hilz, ERLANGEN, GERMANY

Could this patient with a stroke be a Fabry's disease patient?

Alessandro P. Burlina, BASSANO DEL GRAPPA, ITALY

Clinical and therapeutic clues in the management of Pompe's disease

Antonio Toscano, MESSINA, ITALY

Could it be Pompe's disease? How to not get caught in a diagnostic trap

Cornelia Kornblum, BONN, GERMANY

SUNDAY, JUNE 21, 2015

18:30-20:00

TEVA: BREAKING DOWN THE WALLS IN MULTIPLE SCLEROSIS?

Chairperson:

Tjalf Ziemssen, DRESDEN, GERMANY

Working out the challenges faced by MS patients and neurologists

Mar Tintoré, BARCELONA, SPAIN

Gavin Giovannoni, LONDON, UNITED KINGDOM

Bringing new therapies to people with MS: the case of Copaxone 40mg tiw

Peter Rieckmann, BAMBERG, GERMANY

Cop 40mg tiw in the real world

Daniel Wynn, UNITED STATES

The future treatment of neurodegenerative diseases

Michael Hayden, PETAH TIKVA, ISRAEL

SUNDAY, JUNE 21, 2015

18:30-20:00

TAKEDA: POST-STROKE COGNITIVE IMPAIRMENT: CHALLENGES AND NEW TREATMENT STRATEGIES

Chairperson:

Alla Guekht, MOSCOW, RUSSIAN FEDERATION

Problems and current status of post-stroke cognitive impairment (PSCI)

Amos D. Korczyn, TEL AVIV, ISRAEL

Treatment challenges of PSCI

Antonio Federico, SIENA, ITALY

Prevention of PSCI: ARTEMIDA study results

Alla Guekht, MOSCOW, RUSSIAN FEDERATION

SUNDAY, JUNE 21, 2015

18:30-20:00

EISAI: GENERALISED SEIZURES: CHALLENGES AND SOLUTIONS

Chairperson:

Christian Elger, BONN, GERMANY

Burden of illness

- TBA

How to diagnose IGE?

- TBA

Treatment options and challenges

- TBA

What's new?

- TBA

SUNDAY, JUNE 21, 2015

18:30-20:00

BIAL: COMT INHIBITION IN PARKINSON'S DISEASE: PAST REFLECTIONS, FUTURE DIRECTIONS

Chairperson:

Andrew J. Lees, LONDON, UNITED KINGDOM

The science of the COMT inhibitor

Olivier Rascol, TOULOUSE, FRANCE

The COMT inhibitor story so far

Werner Poewe, INNSBRUCK, AUSTRIA

Pipeline development

Joaquim José Coutinho Ferreira, LISBON, PORTUGAL

MONDAY, JUNE 22, 2015

13:00-14:30

GENZYME: FROM MOA TO CLINICAL TREATMENT DECISIONS. IS THERE A NEW WAY OF THINKING IN MS?

Chairperson:

Nikolaos Grigoriadis, THESSALONIKI, GREECE

T & B cells in MS immunopathology – What's one without the other?

Nikolaos Grigoriadis, THESSALONIKI, GREECE

Targeting T & B cells to optimize MS treatment strategies

Finn Thorup Sellebjerg, COPENHAGEN, DENMARK

Volker Limmroth, COLOGNE, GERMANY

Q & A

Nikolaos Grigoriadis, THESSALONIKI, GREECE

MONDAY, JUNE 22, 2015

13:00-14:30

ZAMBON: CHANGING THE TREATMENT PARADIGM IN MID- TO LATE-STAGE PD: EXTENDING STABILITY IN PARKINSON'S DISEASE

Chairpersons:

Heinz Reichmann, DRESDEN, GERMANY

Paolo Barone, NAPLES, ITALY

**Unmet needs in mid- to late-stage PD:
pathophysiological and treatment insights**

Paolo Barone, NAPLES, ITALY

**Dopaminergic and non-dopaminergic targets in PD
treatment: the dual mechanism of action of safinamide**

Ruggero Fariello, BASEL, SWITZERLAND

**Counteracting the dopaminergic/glutamatergic
imbalance in PD: clinical efficacy and tolerability of
safinamide**

Heinz Reichmann, DRESDEN, GERMANY

**Interactive patient case series: treatment challenges in
mid- to late-stage PD**

Werner Poewe, INNSBRUCK, AUSTRIA

MONDAY, JUNE 22, 2015

13:00-14:30

EISAI: OPTIMIZING EPILEPSY THERAPY – SEARCHING FOR THE EVIDENCE, LOOKING BEYOND THE DATA

Chairperson:

Mar Carreño, BARCELONA, SPAIN

Safety of old and new antiepileptic drugs – better the devil we know?

Eugen Trinka, SALZBURG, AUSTRIA

Efficacy of old and new AEDs – are they all the same?

Martin Holtkamp, BERLIN, GERMANY

How to choose the right AED for my patient – evidence-based or empiric decision?

Round table discussion

MONDAY, JUNE 22, 2015

13:00-14:30

**PFIZER: TTR-FAP (TRANSTHYRETIN
FAMILIAL AMYLOID POLYNEUROPATHY):
A RARE AND FATAL POLYNEUROPATHY
REQUIRING EARLY DIAGNOSIS**

Chairpersons:

Ernst-Fritz Hund, HEIDELBERG, GERMANY

Giampaolo Merlini, PAVIA, ITALY

The early diagnosis of TTR-FAP – why it is essential?

Giampaolo Merlini, PAVIA, ITALY

**Working together to achieve an early diagnosis of
TTR-FAP**

Yesim Parman, ISTANBUL - CAPA, TURKEY

**The benefits of an early diagnosis and treatment of
TTR-FAP**

Isabel Maria Santos Conceicao, LISBON, PORTUGAL

MONDAY, JUNE 22, 2015

18:30-20:00

HOFFMANN-LA ROCHE: BACK TO BASICS IN NEUROIMMUNOLOGY: WHAT EVERY NEUROLOGIST NEEDS TO KNOW AND WHY!

Chairpersons:

Eva Havrdova, PRAGUE, CZECH REPUBLIC

Bernhard Hemmer, GERMANY

The ABC of Neuroimmunology

Gavin Giovannoni, LONDON, UNITED KINGDOM

T-cells in neurology and MS: still the leader?

Bernhard Hemmer, GERMANY

B-cells in neurology and MS: the renaissance?

Edgar Meinl, MUNICH, GERMANY

Neuroimmunology in context: MS today and in the future!

Olaf Stuve, DALLAS, TX, UNITED STATES

Panel discussion & audience Q+A

Eva Havrdova, PRAGUE, CZECH REPUBLIC

TTR-FAP*: a rare and fatal polyneuropathy requiring early diagnosis

*TTR-FAP: Transthyretin Familial Amyloid Polyneuropathy

Monday June 22nd 2015

13.00–14.30

Hall A4, CityCube

Co-Chairmen:

Professor Ernst Hund (*University of Heidelberg, Germany*)

Professor Giampaolo Merlini (*University of Pavia, Italy*)

Agenda

- 13.00** Welcome and introduction
Professor Ernst Hund, University of Heidelberg, Germany
- 13.10** The early diagnosis of TTR-FAP – why it is essential
Professor Giampaolo Merlini, University of Pavia, Italy
- 13.30** Working together to achieve an early diagnosis of TTR-FAP
Professor Yeşim Parman, Istanbul Faculty of Medicine, Istanbul, Turkey
- 13.50** The benefits of an early diagnosis and treatment of TTR-FAP
Dr Isabel Conceição, Centro Hospitalar Lisboa Norte-Hospital de Santa Maria, Lisbon, Portugal
- 14.10** Panel discussion
- 14.25** Co-Chairmen's close