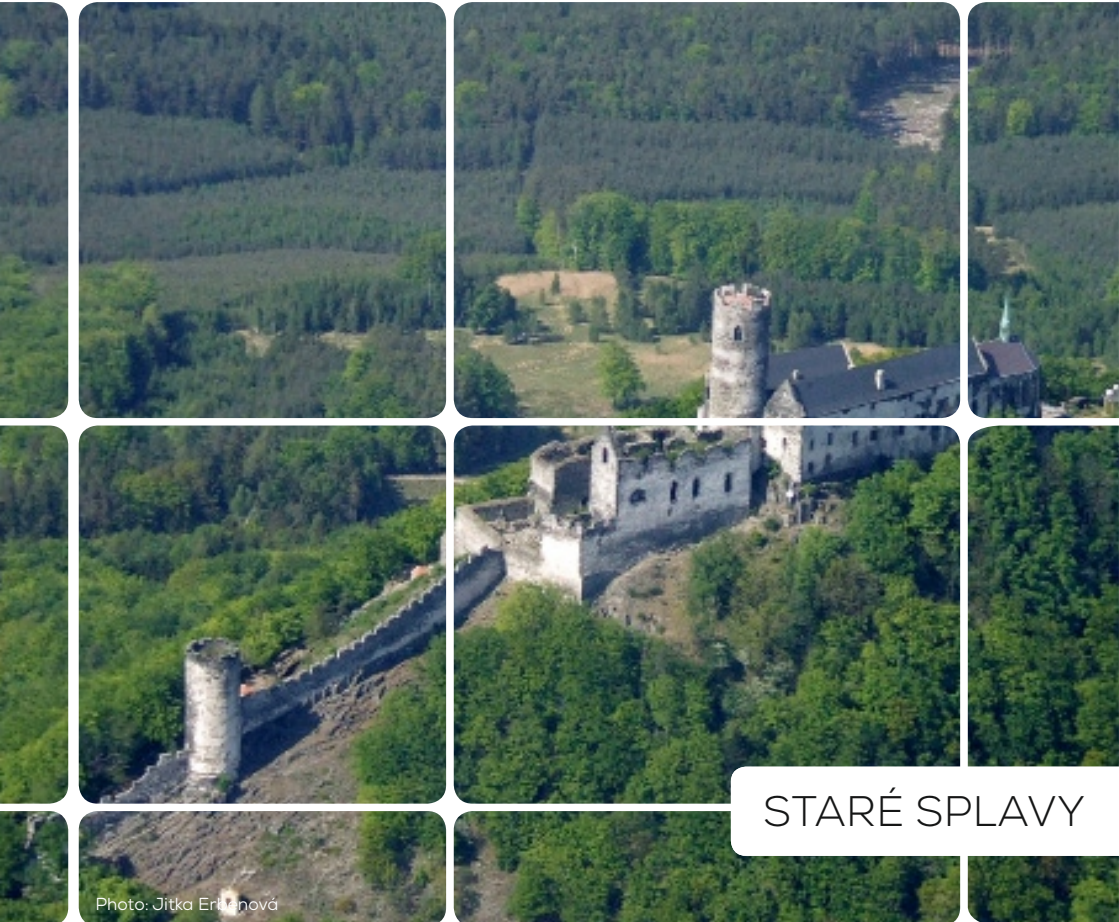


SPRING SCHOOL FOR YOUNG NEUROLOGISTS

MAY 7 - 10, 2015



STARÉ SPLAVY

Photo: Jitka Erbenová

GENERAL

Welcome message	5
About the EAN	7
Local arrangements committee	11
General information	12
List of lecturers	15
Scientific programme	18
Scientific programme summary	21
Groups	22
Cultural programme	23
About the venue	24
Chateau Mnichovo Hradiště	27
Prague	29
Invitation to the Czech Republic	30
List of participants	31
Notes	38
Acknowledgements	39

Carmen cantatum neurologicum

Neu - ro - lo - o - gi - a
 a - mi - ca me - a !
 Ser - vus tu - us te a -
 ma - bo ho - nes - ta - a de
 - a.

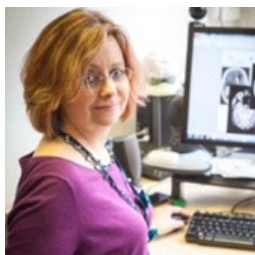
2. Neurologia
 vis fanatica
 hostes omnes superabit
 eius logica.

3. Neurologia
 sors mea dura
 ut florendae scientiae
 mihi sit cura !

4. Neurologia
 ars mea pia
 Numquam enim finietur
 eius gloria !

5. Neurologia
 est infinita.
 Fides firma semper lucet
 in nostra vita !

Lyrics: prof. Dr. Jan Stýblo, CSc.



DEAR COLLEAGUES,

I'm so sorry not to be able to join you at this, the first Spring School under the auspices of the European Academy Of Neurology. The last few months since I took up the position as chair of the education committee have been exceptionally busy for me, and all of the board, as we set out to define the shape of

things to come. Next year's date is already in my diary, but this year just wasn't possible.

The spring school is one of the traditions inherited from our predecessors we are keen to continue, bringing together young and older, east and west in an environment we know from past feedback is both conducive to learning, expanding networks and importantly also fun. This year's topics including trauma and rehabilitation, language and cognition, and neurooncology reminds us that optimising function and quality of life is as important as diagnosis and cure, sometimes more so for the many people with long term neurodisability. If you haven't already do visit the EAN website and ensure your email spam filters don't block our newsletter neuropenews – both of which have new editors so expect some changes too. Education is one of the cornerstones underpinning the vision of the EAN, and ensuring we meet the needs of residents and trainees is essential to our future. Educational updates are posted in the newsletter e.g. <http://www.neuropenews.org/?p=8414>, and we are currently reviewing both the department–department exchange programme, and the fellowships for 2016, so look out for mailshots about these later in the year. Information will also be available at the 1st EAN congress in Berlin which we hope some of you will be able to join us for.

Many of you will be intuitional members via your national organizations, but please also consider becoming full individual members at the reduced (residents) cost of only 100Euro/year. As well as the reduced rates for congress, ebrain and European Journal of Neurology access, individual membership is expected for grant applicants, and ensures you have the opportunity to contribute to the shape of future European Neurology through the assembly of delegates and scientific panels. Application details are at: <http://www.eaneurology.org/Individual-Members.1642.0.html>

I'm sure this years school will be both educational and enjoyable, and look forward to reviewing your feedback (good and bad, but please be constructive!) and suggestions for future years. Wishing you every success

Dr. Hannah Cock

Dr. Hannah Cock is chair of the EAN Education Committee and works at the Atkinson Morley Regional Neuroscience Centre, St. George's NHS Trust, London, United Kingdom

WELCOME MESSAGE

2015

DEAR COLLEAGUES,

I am delighted that this 16th course of the Spring School for Young Neurologists organized by the European Academy of Neurology resumes the tradition of courses organized by the EFNS and ENS.

Allow me to submit a short review of the hitherto 15 courses:

The first run, then under the name of „First European Cooperation Neurology Workshop“, took place in 2000 in Třešť, close to Jihlava. The same castle hosted also the second course. In order to achieve better travel connections, closer to Prague, and also to gain higher capacity of a hotel we have placed this event into the hotel Bezděz in Staré Splavy, on Machá's Lake. It was in 2002.

During the last 15 years 123 faculty speakers from 21 countries had their educational presentations on 30 particular topics. Among them we can mention: Autonomic nervous disorders, Cognitive and Language disorders, Degenerative disorders, Dementia, Epilepsy, Headache, Intensive care, Movement disorders, Multiple sclerosis, Neuroethics, Neuroimaging, Neuroimmunology, Neuroinfections, Neuromuscular disorders, Neurooncology, Neuropathy/Radiculopathy, Neuroophthalmology, Stenotic processes in cerebral circulation, Stroke, Ultrasonography, Vascular malformations, Vertebrogenic disorders, Neurology in the world, etc.

The frame of the Spring School did not harbour only scientific/educational programmes, but starting from the first course, they were refreshed also by cultural entrances. Several concerts were performed, given by students of the Academy of Musical Arts, Prague. In most cases the programme was classical music. Two concerts were vocal, when a „Vocal choir of sightless singers – SONS“, have performed. For the second time we welcome a Swiss group „Rolling Fifties“ led by our lecturer dr. Denis Kaech. We have also visited Prague and 8 different castles: Telč, Roštejn, Zahrádky, Mělník, Lemberk, Sychrov, Mnichovo Hradiště and Loučeň.

Dear colleagues, our team wish you most beneficial lectures, discussions and making new friends.

Welcome in the Czech Republic, welcome in Staré Splavy!

Magda Dohnalová

ABOUT THE EAN

EXCELLENCE IN NEUROLOGY IN EUROPE

The purpose of the EAN is

- to increase the availability and standards of neurological services;
- to advance the development of neurology as the major medical specialty caring for patients with neurological disorders;
- to encourage collaboration between European national neurological societies;
- to strengthen collaboration between clinical neurology and related professional and lay organisations;
- to support neurological research, encourage research collaboration, and promote dissemination of research results;
- to strengthen the standard, availability and equality of neurological education for neurologists and affiliated/related health professionals;
- to raise awareness among the lay public, media, health care providers and other stakeholders, as well as law and policy makers about the burden and cost of neurological disorders and the benefits which clinical neurology can bring;
- to collaborate with international, national and regional neurological associations and related international health organisations;

The EAN will base its activities on the following five values:

- Professionalism. The EAN will strive to reach the highest scientific standards and to deliver unbiased information in its research and educational activities.
- High ethical standards. The EAN will apply high ethical standards in all its activities within science, education, liaison, and administration, complying with applicable regulations and codes of ethics.
- Involvement. The EAN will strive to involve its members and collaborators in the organisation of research, education and liaison activities.
- Independence. The EAN will operate as a professional and scientific organization, independent from the political or commercial interests of external companies or organisations.
- Transparency. The EAN will provide transparency in the organisation of all its scientific and administrative activities.

ABOUT THE EAN

2015

THE EAN IS AN ORGANISATION OF

- 45 European national neurological societies
- 9 associate member societies
- 800 individual members

THE EAN CONSISTS OF

- an Assembly of Delegates of institutional and individual delegates
- elected officers
- 4 committees (+ 2 sub-committees)
- 31 Subspeciality Scientific Panels

MEMBER COUNTRIES

Albania, Armenia, Austria, Azerbaijan, Belarus, Belgium, Bosnia and Herzegovina, Bulgaria, Croatia, Cyprus, Czech Republic, Denmark, Estonia, FYRO Macedonia, Finland, France, Georgia, Germany, Greece, Hungary, Iceland, Ireland, Israel, Italy, Latvia, Lithuania, Luxembourg, Moldova, Montenegro, Norway, Poland, Portugal, Romania, Russian Federation, Serbia, Slovakia, Slovenia, Spain, Sweden, Switzerland, The Netherlands, Turkey, Ukraine, United Kingdom, Uzbekistan

ASSEMBLY OF DELEGATES

The democratic heart of the EAN is the Assembly of Delegates, consisting of 45 Individual Delegates and 45 National Delegates representing 45 member nations of the EAN.

EAN BOARD

PRESIDENT	Günther Deuschl, GERMANY
VICE PRESIDENT	Franz Fazekas, AUSTRIA
SECRETARY GENERAL	Didier Leys, FRANCE
TREASURER	Marianne de Visser, THE NETHERLANDS
CHAIR SCIENTIFIC COMMITTEE	Antonio Federico, ITALY
CHAIR LIAISON COMMITTEE	David B. Vodusek, SLOVENIA
MEMEBER AT LARGE	Per Soelberg Sørensen, DENMARK
CHAIR EDUCATION COMMITTEE	Hannah R. Cock, UK
CHAIR PROGRAMME COMMITTEE	Paul A.J.M. Boon, BELGIUM

EUROPEAN ACADEMY OF NEUROLOGY HEAD OFFICE

Breite Gasse 4/7
1070 Vienna, Austria
PHONE: +43 1 889 05 03
FAX: +43 1 889 05 03 13
E-MAIL: headoffice@eaneurology.org
WEB: www.eaneurology.org

EXECUTIVE DIRECTOR
HEAD OFFICE MANAGER
ADMINISTRATION

Elisabeth Müller
Anja Sander
Lucia Černická
Malin Inzinger
Julia Mayer
Marion Russ

The address of EAN Head Office is the official address. The Head Office is in charge of the general administration of the organization. The Head Office is the centre of information, communication and coordination of the EAN.



ABOUT THE EAN

2015

The EAN Office in Brussels/Florence is in charge of Liaison and of the Regional Teaching Courses in Africa

Administration Ms. Eveline M. Sipido

c/o University Foundation
11, Rue d'Egmont
B-1000 Brussels

University of Florence
Department NEUROFARBA
Viale G. Pieraccini 6
50139 Florence, Italy
PHONE: + 39 348 30 32 754
E-MAIL: sipido@eaneurology.org

The EAN Office in Prague is in charge of the EAN Department-Department Co-operation Programme and the EAN Spring School for Young Neurologists

Administration Ms. Magda Dohnalová



P.O. Box 35
Litevská 1
100 05 Praha 105, Czech Republic
PHONE: +420 721 725 816
+420 267 163 563
FAX: +420 267 163 563
E-MAIL: dohnalova@eaneurology.org

EAN SPRING SCHOOL FOR YOUNG NEUROLOGISTS

LOCAL ARRANGEMENTS COMMITTEE

CHAIRPERSON EAN TEACHING COURSE SUB-COMMITTEE:

Prof. Theodor Landis, MD, SWITZERLAND

COURSE DIRECTOR

Ing. Magda Dohnalová

CHAIRMAN

Prof. Pavel Kalvach, MD, PhD

Ing. Zdeněk Dohnal

Bc. Jiří Dohnal

Jiří Keller, MD, PhD

Kryštof Pohl

Lenka Omelková



The Mácha's Lake

GENERAL INFORMATION

2015

GENERAL INFORMATION

LOCATION

**Hotel Bezděz**

Lázeňský Vrch 216

471 63 Staré Splavy, Czech Republic

PHONE: +420 487 872 551

FAX: +420 487 873 246

E-MAIL: hotel.bezdez@tiscali.czWEB: hotelbezdez-machovojezero.cz

The hotel lies about 90 km from Prague at an elevation of 270 m above sea. It is situated on the shore of the Mácha's Lake, which is surrounded by pine forest and a gorgeous scenery of Bohemian Paradise. The Mácha's Lake area is a much-loved recreational locality with an excellent climate, influenced by numerous fishponds and extensive forests.

Accommodation is provided in double rooms with shower, WC, TV-sat and balcony. There is a sandy beach near the hotel, minigolf, tennis courts, a sport hall, rental services for bikes, surfs and boats. The surroundings have good conditions for touristic activities. In the hotel there is a restaurant, daily bar, summer terrace, mini-gym and billiards. To the hotel belongs also the annex „Kouba“, about 50 meters far, which offers accommodation in single till 4 bedded rooms. Prices don't include: sauna, swimming pool, massages, water massages, whirlpool, table tennis, minigolf, tennis, rental services, entrance to the beach. Parking right at the hotel is charged. Dogs are not allowed.

PAYMENTS

You may use the following credit cards for all payments within the hotel Bezděz in Staré Splavy

- VISA
- Maestro Card
- Visa – Elektron Card
- Eurocard- Mastercard

For Czech cash an ATM of the Czech Savings Bank in Doksy village can be used.

HOTEL SERVICES

- Reception desk
- Exchange – office, safes
- Restaurant, day bar with terrace
- Congress hall for 150 people
- WiFi connection installed in the conference hall and bar

BOARD

Every day you get free of charge

- breakfast – self service, continental breakfast
- lunch (consisting of soup, main course, fruit, desert, mineral water) – self service
- dinner (consisting of main course, fruit, mineral water) – self service

All other meals and beverages during your stay go on your own expenses and you will be charged by the staff of the hotel.



The hotel's congress hall

SMOKING

Smoking is not allowed in any of the conference rooms. You can have a cigarette during coffee breaks in a room especially reserved for this purpose.

GENERAL INFORMATION

2015

TRAINS AND BUSES

The bus station is about 850 m and the train station is about 700 m from the hotel. Parking place is at the hotel Bezděz.

LIABILITY AND INSURANCE

The organizer will not assume any responsibility whatsoever for damage or injury to persons or property during the course. Participants are recommended to arrange for their personal travel and health insurance.



Photo: Z. Dohnal

View of the Hotel Bezděz

LIST OF LECTURERS

Assoc. Prof. Ivana Štětkařová, MD, PhD

Head, Dept. of Neurology and MS Center
Charles University, 3rd Faculty of Medicine and University Hospital FNKV
Prague 10, Srobarova 50, 100 00, Czech Republic

PHONE: +420267162380

E-MAIL: ivana.stetkarova@fnkv.cz

.....

Dr. med. Denis Laurent Kaech

Leitender Arzt
Neurochirurgische Abteilung
Kantonsspital Chur
Chur, Switzerland

FAX: 0041 81 256 66 59

E-MAIL: deniskaech@ksgr.ch

.....

Prof. Taras Aleksandrovich Skoromets, MD

Chairman, Dept. of Neurology and Neurosurgery
SPBGMU of I.P. Pavlov
L'va Tolstogo str. 6/8
197022 St. Petersburg, Russia

PHONE/FAX: +7(812)412-72-88, +7(901)302-41-10

E-MAIL: tskoromets@mail.ru

.....

Prof. Imre Szirmai, MD

Department of Neurology
Semmelweis University Medical School
Balassa ut. 6
1083 Budapest, Hungary

PHONE: +36 1 210 0337

FAX: +36 1 210 0337

E-MAIL: szirmai@neur.sote.hu

LIST OF LECTURERS

2015

Univ.-Prof. Dr.med.univ. Reinhold Schmidt

Department of Neurology, 1st subst. Head and Chair of Department

Auenbruggerplatz 22

8036 Graz, Austria

Division of Neurogeriatrics, Director of Division

Auenbruggerplatz 22

8036 Graz, Austria

PHONE: 385-83397

E-MAIL: reinhold.schmidt@medunigraz.at

Prof. Olivier Godefroy

Service de Neurologie

CHU Amiens

80054 Amiens Cedex, France

PHONE: 0322668240 / F:0322668244 Godefroy.Olivier@chu-amiens.fr

WEB: <http://www.chu-amiens.fr/homepage/>

Laboratoire de Neurosciences Fonctionnelles et Pathologies EA4559:

WEB: <https://sites.google.com/site/lnfpamienssite/evaluation/grecog-vasc>WEB: SNLF: <http://www.snlf.net/>**Prof. Dr. med. Ulrich Roelcke**

Hirntumorzentrum

Kantonsspital Aarau AG

Tellstrasse

CH-5001 Aarau, Switzerland

PHONE: 0041 (0)62 838 98 55

FAX: 0041 (0)62 838 98 58

E-MAIL: hirntumorzentrum@ksa.ch

Prof. Riccardo Soffietti, MD

Head, Department of Neuro-Oncology,

University of Turin and City of Health and Science Hospital

Via Chersco 15

10136 Torino

PHONE: +39 011 633 4904

FAX: +39 011 696 3487

E-MAIL1: riccardo.soffietti@unito.it, E-MAIL2: riccardo.soffietti@gmail.com

Thomas Hundsberger, MD

Senior physician

Departments of neurology and of hematology/oncology

Cantonal hospital

Rorschacherstr. 95

9007 St. Gallen, Switzerland

PHONE: 0041 71 494 3095

FAX: 0041 71 494 2895

E-MAIL: thomas.hundsberger@kssg.ch

Karel Moses, MD

Rehabilitation Centre Kladruby

Kladruby 30, 257 62 Kladruby u Vlašimi, Czech Republic

PHONE: +420 317 881 111

E-MAIL: karel.moses@rehabilitace.cz

FAX: +420 317 881 191

WEB: www.rehabilitace.cz

Prof. Pavel Kalvach, MD, PhD

Dept. of Neurology, 3rd Faculty of Medicine and FNKV

Šrobárova 50, 100 34 Prague 10, Czech Republic

PHONE: + 420 2 6716 3657

FAX: + 420 26716 3563

E-MAIL: pavel.kalvach@fnkv.cz

Anna Sauerbier, MD

European Association of Young Neurologists and Trainees - EAYNT

E-MAIL: sauerbier.anna@gmail.com

WEB: <http://www.eaynt.org>**Ing. Martin Pospíšil**

Lundbeck, Prague

SCIENTIFIC PROGRAMME

2015

THURSDAY, MAY 7, 2015 NEUROTRAUMATOLOGY

MORNING

Ivana Štětkářová, CZECH REPUBLIC

Modern diagnostics and treatment of spinal cord injuries

Denis Kaech, SWITZERLAND

Head injuries: possibilities and limitations of neurosurgical interventions

Taras A. Skoromets, RUSSIA

Post-traumatic brain ischaemia and hydrocephalus

AFTERNOON

Ivana Štětkářová, CZECH REPUBLIC

Methods for reducing spasticity after injury

Denis Kaech, SWITZERLAND

Trauma of the thoracolumbar spine. Surgery and relief of spasticity

Taras A. Skoromets, RUSSIA

Treatment and early rehabilitation of brain trauma using modern appliances

FRIDAY, MAY 8, 2015 HIGHER NERVOUS ACTIVITY, LANGUAGE DISORDERS

MORNING

Imre Szirmai, HUNGARY

Aphasias and their relation to thinking

Reinhold Schmidt, AUSTRIA

Cognitive decline in old age

Olivier Godefroy, FRANCE

Diagnosis of dysexecutive syndrome

AFTERNOON

Imre Szirmai, HUNGARY

Language: How does it work?

Reinhold Schmidt, AUSTRIA

Auxiliary methods for studying dementia

Olivier Godefroy, FRANCE

Clinical cases of dysexecutive disorders

SATURDAY, MAY 9, 2015 NEUROONCOLOGY

MORNING

Ulrich Roelcke, SWITZERLAND

Introduction to brain tumors. Clinical issues in gliomas

Riccardo Soffietti, ITALY

Diagnosis and treatment of brain metastases: a modern approach

Thomas Hundsberger, SWITZERLAND

Meningiomas. Diagnostics and treatment

SCIENTIFIC PROGRAMME

2015

SATURDAY, MAY 9, 2015

NEUROONCOLOGY

AFTERNOON

Ulrich Roelcke, SWITZERLAND

Use of anticonvulsants in brain tumors. Chemotherapy and radiation therapy

Riccardo Soffietti, ITALY

Management of neoplastic meningitis. Primary CNS lymphomas

Thomas Hundsberger, SWITZERLAND

Intracranial mass lesions – differential diagnosis

SUNDAY, MAY 10, 2015

Karel Moses, MD, CZECH REPUBLIC

Advanced innovative assistive technologies for compensation of mobility in neurological patients

Martin Pospíšil, Lundbeck, CZECH REPUBLIC

Educational systems in neurosciences

Pavel Kalvach, CZECH REPUBLIC

History and integration of neurology

Anna Sauerbier, EAYNT representative

Postgraduate education in neurology, chances and administration of Young Neurologists' training

Session "How to apply for grants"

WEDNESDAY, MAY 6, 2015 ARRIVAL

THURSDAY, MAY 7, 2015	FRIDAY, MAY 8, 2015	SATURDAY, MAY 9, 2015	SUNDAY, MAY 10, 2015
07:00 – 07:30 Registration			
08:00 – 09:00 Opening Ceremony			
09:00 – 09:50 Lecture Ivana Štětkařová CZECH REPUBLIC	08:30 – 09:20 Lecture Imre Szirmai HUNGARY	08:30 – 09:20 Lecture Ulrich Roelcke SWITZERLAND	08:30 – 09:00 Lecture Karel Moses CZECH REP.
09:50 – 10:40 Lecture Denis L. Kaech SWITZERLAND	09:20 – 10:10 Lecture Reinhold Schmidt AUSTRIA	09:20 – 10:10 Lecture Riccardo Soffiatti ITALY	09:00 – 09:25 Lecture Martin Pospíši CZECH REP.
10:40 – 11:10 Break	10:10 – 10:40 Break	10:10 – 10:40 Break	09:25 – 10:00 Lecture Pavel Kalvach CZECH REP.
11:10 – 12:00 Lecture Taras A. Skoromets RUSSIA	10:40 – 11:30 Lecture Olivier Godefroy FRANCE	10:40 – 11:30 Lecture Thomas Hundsberger SWITZERLAND	10:00 – 10:30 Break
12:00 – 13:00 Lunch	11:30 – 12:30 Lunch	11:30 – 12:30 Lunch	10:30 – 11:00 Lecture Anna Sauerbier UK
14:00 – 14:50 LH Štětkařová R1 Kaech R2 Skoromets	13:30 – 14:20 LH Szirmai R1 Schmidt R2 Godefroy	13:30 – 14:20 LH Roelcke R1 Soffiatti R2 Hundsberger	11:00 – 11:30 Closing Ceremony
GR-1 GR-2 GR-3	GR-1 GR-2 GR-3	GR-1 GR-2 GR-3	
15:00 – 15:50 LH Štětkařová R1 Kaech R2 Skoromets	14:30 – 15:20 LH Szirmai R1 Schmidt R2 Godefroy	14:30 – 15:20 LH Roelcke R1 Soffiatti R2 Hundsberger	11:30 – 12:30 Lunch
GR-2 GR-3 GR-1	GR-2 GR-3 GR-1	GR-2 GR-3 GR-1	
15:50 – 16:10 Break	15:20 – 15:40 Break	15:20 – 15:40 Break	13:30 – 22:30 Excursion to Prague
16:10 – 17:00 LH Štětkařová R1 Kaech R2 Skoromets	15:40 – 16:30 LH Szirmai R1 Schmidt R2 Godefroy	15:40 – 16:30 LH Roelcke R1 Soffiatti R2 Hundsberger	
GR-3 GR-1 GR-2	GR-3 GR-1 GR-2	GR-3 GR-1 GR-2	
17:30 – 18:30 Dinner free evening	17:00 – 22:30 Mnichovo Hradiště	17:00 – 18,30 Dinner free evening	LH = Lecture Hall R1 = Room 1 R2 = Room 2

MONDAY, MAY 11, 2015 DEPARTURE – 6:00

SCIENTIFIC PROGRAMME

2015

GROUP 1

.....

Armenia, Belgium, Bulgaria, Cameroon, Croatia, Czech R., Denmark, Egypt, Morocco, Tanzania, Tunisia, Ukraine

GROUP 2

.....

Belarus, Estonia, France, Georgia, Germany, Italy, Kyrgyzstan, Moldova, Poland, Turkey, United Kingdom, Uzbekistan

GROUP 3

.....

Portugal, Romania, Russia, Slovenia, Spain, Sweden, Switzerland

CULTURAL PROGRAMME

Friday, May 8, 2015

17,00 Visit to the **Mnichovo Hradiště** Chateau, concert and dinner

Concert performers:

„**Rollin´ Fifties**“:

Denis L. Kaech

Willy Surbeck

Lorenz Trottmann

Kai Dellers

Tassilo Dellers

Daniel Andrey



Sunday, May 10, 2015

11,00 Spring School **closing ceremony** and assignment of certificates to the participants

13,30 Excursion to Prague

free programme - sightseeing of the Prague Castle with St.Vitus´ Cathedral, St. Nicholas´ Church, Charles Bridge, National Theatre, Old Town Hall and the Astronomical Clock



ABOUT THE VENUE

2015

ABOUT THE VENUE

Doksy and Staré Splavy – are popular holiday resorts in the region around Macha's Lake. The first written reference to this place originates from 1293. The name of Doksy may well originate from the anglosaxon name dox = dark, according to the dark muddy place around the local stream.

The dominant points of the town are the newly reconstructed square, with the Marian sculptural group from 17th century and the St. Bartholomew's Church from the year 1638.

The furnishings of the church are Early Baroque, with Rococo accessories. The portal's main altar, from the years 1670 – 80, holds a statuette of Our Lady of Montserrat (also known as the Black Madonna) from about 1635, which was taken over to the church from the chapel of the castle of Bezdez. It is one of the only three existing copies.

The oldest house in the town is the so-called Hospitalek (Little Hospital), originally a poorhouse and an orphanage; the countess Mary Francis, born in Vrtba, the second wife of Christopher Ferdinand from Heissenstein, had it built in 1669. Today it is a Museum of Karel Hynek Macha.

The town of Stare Splavy, situated on the northern shore of the lake, became part of Doksy in 1850 and has ever since contribute to the development of tourism in the region.



Photo: Z. Dohnal

The Doksy square with the Marian sculpture



Staré Splavy - Queen of the Lake

The dominant feature of the region is one of the most important early gothic castles in Bohemia - **Bezděz**. This royal castle was built on a hilltop (638 m a.s.l.) between 1260-1279 by a Czech king Přemysl Otakar II. The king Václav II. with his mother Kunhuta were held here as prisoners. During the 30years war (1618-1648) the castle was burned down by Swedish soldiers. Later it has been turned into a Benedictine monastery. After the Benedictines have left around the year 1785, the castle became deserted. It became a romantic ruin, which is described in many works by the most important Czech romantic poet - Karel Hynek Mácha.



The Bezděz Castle

ABOUT THE VENUE

2015

Karel Hynek Mácha (1810-1836) is the founder of modern Czech poetry. The castle Bezděz with the Velký rybník (big pond) became an inspiration for his best known poem "**Máj**". This beautiful poem features a tragedy of 3 people. Jarmila and Vilém are lovers. Jarmila was seduced by Vilém's father. Vilém kills Jarmila's seducer without knowing it is his own father. For this murder he is put in prison and executed. Jarmila commits suicide by jumping into the lake.

*Byl pozdní večer – první máj –
večerní máj – byl lásky čas.
Hrdliččin zval ku lásce hlas,
kde borový zaváněl háj.
O lásce šeptal tichý mech;
květoucí strom lhal lásky žel,
svou lásku slavík růži pěl,
růžinu jevil vonný vzdech.
Jezero hladké v křovích stinných
zvučelo temně tajný bol,
břeh je objímal kol a kol;
a slunce jasná světů jiných
bloudila blankytnými pásy,
planoucí tam co slzy lásky.*

*Late evening, on the first of May –
The twilight May – the time of love.
Meltingly called the turtle-dove,
Where rich and sweet pinewoods lay.
Whispered of love the mosses frail,
The flowering tree as sweetly lied,
The rose's fragrant sigh replied
To love-songs of the nightingale.
In shadowy woods the burnished lake
Darkly complained a secret pain,
By circling shores embraced again;
And heaven's clear sun leaned down to take
A road astray in azure deeps,
Like burning tears the lover weeps.*

Bezděz became a theme for many other works, for example for Smetana's opera **Tajemství** (Secret), which is based on a libretto by Eliška Krásnohorská describing the story of treasure on Bezděz.

CHATEAU MNICHOVO HRADIŠTĚ

Chateau Mnichovo Hradiště and its surroundings are an example of a spectacular baroque estate, which has been preserved with very few changes. In 1623 the famous commander Albrecht von Wallenstein confiscated the estate, which was at that time still renaissance. The Wallenstein family possessed the chateau for three centuries.

After the year 1690 a new period started, when Ernst Joseph von Wallenstein moved in. In 1696 vast reconstruction began according to the plans of architect Canevalle. The reconstruction lasted for around 30 years. The chateau was modernized, another floor was added and the clock tower was erected. New stables, the sala terrena and an orangery were also built.

The older L shaped renaissance part of the castle, with one entrance and a large corner hall, now forms a U shape with the symmetrical newer part. Thus two main halls with an unusual corner placement were created on the first floor of the chateau, the entrance hall and theater.

The chateau's original richly decorated interiors from the beginning of the 18th century, made by plasterer Jan Spazzo, have not been preserved. Apparently they were destroyed by the fire in 1724.

After the fire the interiors were probably renovated by plasterer Mates Tollinger from Litoměřice. The Golden cabinet was set up after 1730, its rich decoration and the Chateau's chapel decoration were made simultaneously. Both rooms are showcase specimens of very successful baroque ornamental productions.



CHATEAU MNICHOVO HRADIŠTĚ

2015

The Chapel of St. Anna



The chateau's miniature gallery was installed before the second half of the 18th century. Over time the picture collection grew up to 112 peaces, completely covering the walls in the gallery. The decoration of the rooms in the west wing was finished in the second half of the 18th century.

A remarkable stove with dolphin sculptures was placed in one of these rooms. In 1872 the new dining room was set up in the east wing and the cassette ceiling from Chateau Dobrovice was installed here.

In 1945 Chateau Mnichovo Hradiště was seized by the government. After that the National cultural administration took over its management.



PRAGUE

Since pre-historic times, Prague has been an important trade center. Its location at the Vltava river in the center of Europe proved ideal. It became political center of Bohemia, and in the 10th century, it also became a religious center. In the 14th century, Prague had become the most important city of central Europe. After emperor Charles IV had all the city gate's roofs covered with lead, Prague was dubbed the „Golden City“. It would remain one the most influential cities in Europe until the 20th century.

Today „the City of Hundred Spire's“ is a magnet for tourists, with numerous magnificent towers and churches.

Prague Castle – has grown into unique architectural complex. It contains the gothic St. Vitus Cathedral, a monastery, several towers and many wings of palaces.

The first Prague castle was built in the 9th century. In the 12th and 13th century the castle was fortified and expanded. Around the castle, a small community started to grow. Its neighborhood, now called Lesser Town, obtained city rights in 1857. In the 14th century, under the reign of King Charles the whole castle was renovated.

The Czech coronation jewels – a set of exceptional historical and artistic value that were used for coronations of the Czech kings.

The set consists of the St. Wenceslas Crown with a case and cushion, the royal sceptre with a case, the royal orb with a case and the coronation vestment.

The uniqueness of the Czech coronation jewels is stressed by Emperor Charles IV.



The jewels are kept in the Crown Chamber of the St. Vitus' Cathedral. The keys are in possession of – the president, the prime minister, the Prague archbishop, the president of the Senate, the chairman of the Chamber of Deputies, the dean of the Metropolitan Chapter and the mayor of Prague.

INVITATION TO THE CZECH REPUBLIC

2015

INVITATION TO THE CZECH REPUBLIC



Legend has it that Čech, the forefather of the Czech nation, ascended the mountain called Říp accompanied by his kindred. Since that time the country has born Čech's name.

The Czech Republic does not have access to the sea. The main watershed divides the catchment areas of the North, the Baltic and the Black seas. The closest seas are the Baltic and the Mediterranean – both of which are very popular destinations for Czech travelers. The main rivers running through the Czech republic are the Elbe (Labe – 370 km), Vltava (433 km) in Bohemia, the Morava in Moravia (246 km), the Dyje (306 km), the Oder (Odra – 135 km) and the Opava rivers (131 km) in Silesia.

From a geographical point of view, the Czech Republic lies on the boundary line of two mountain ranges. The hilly western and middle part of Bohemia is formed by the Czech highlands and the slightly higher mountain ranges of Šumava, Český les, Krušné hory, Krkonoše, Orlické hory and Jeseníky. The west Carpathian Mountains (Beskydy) lie in the eastern part of the country.

Area size – with a total area of almost 79000 square kilometers, the Czech Republic is a midsize European country. Its size is comparable to Austria or Ireland and would fit inside France seven times.

The Czech Republic makes up 2% of the European Union. The country comprises three historical lands – Bohemia, Moravia and Silesia. Bohemia is the largest, the area of Moravia is half the size of Bohemia, and the smallest land, Silesia, has an area of approximately 4500 square kilometres.

Administratively, the Czech Republic is divided into 14 regions, one of those being the capital city of Prague. The largest region – Central Bohemia – surrounds Prague from all sides.

The list of the largest cities of the Czech Republic opens with the capital city of Prague, followed by Plzeň, Brno, Liberec and Ostrava.

NOTES

2015

The organizers acknowledge with gratitude a generous support given to the Spring School by an unrestricted grant of the Lundbeck International Neuroscience Foundation

Lundbeck International
Neuroscience Foundation



The organizers would like to thank for a long-time cooperation to:

Rehabilitation Centre Kladruby, Kladruby by Vlašim
The National Institute of Public Health, Prague
Third Faculty of Medicine, Charles University, Prague



european academy of neurology

HEAD OFFICE:
Breite Gasse 4/7
1070 Vienna, Austria

PHONE: +43 1 889 05 03
FAX: +43 1 889 05 03 13
E-MAIL: headoffice@eaneurology.org
WEB: www.eaneurology.org